

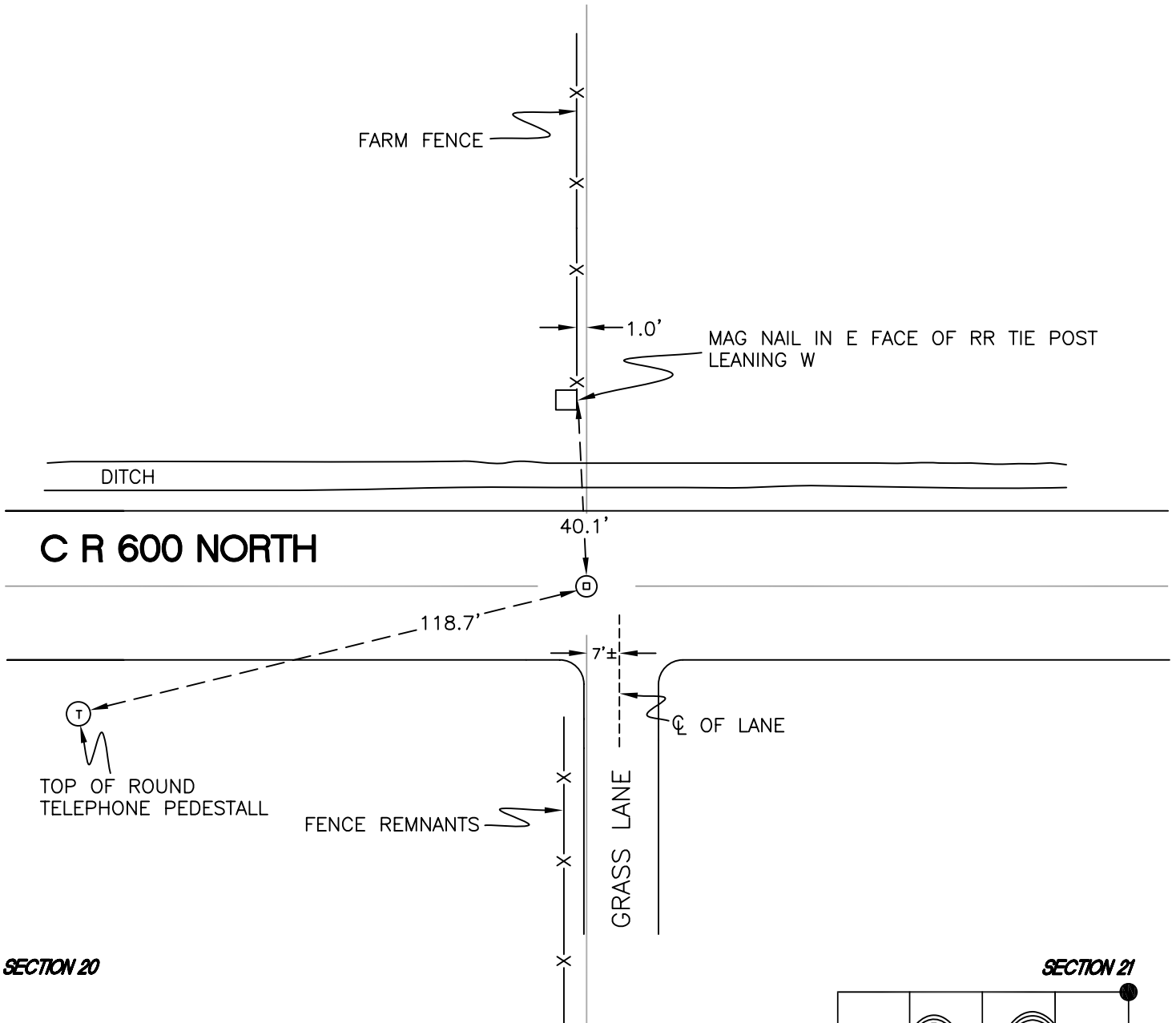
# DAVIS TOWNSHIP

T 34 N, R 2 W

## N9

SECTION 17

SECTION 16



SECTION 20

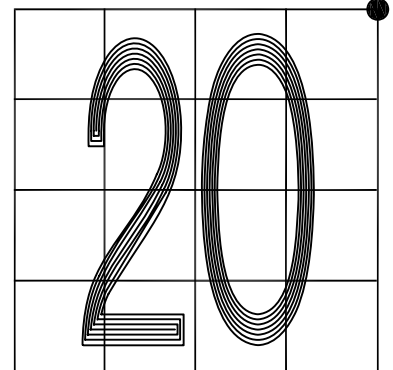
SECTION 21

MONUMENT: RR CROSSING BOLT

PARTY: DPS/JL

DATE: 13/17/16

COMMENTS: USED BY WIGHTMAN CRAMER IN SURVEY # 98327,  
AND TERRITORIAL ENGINEERING IN DOCUMENT #  
2008001449.



CORNER LOCATION IN THE SECTION

## N9