

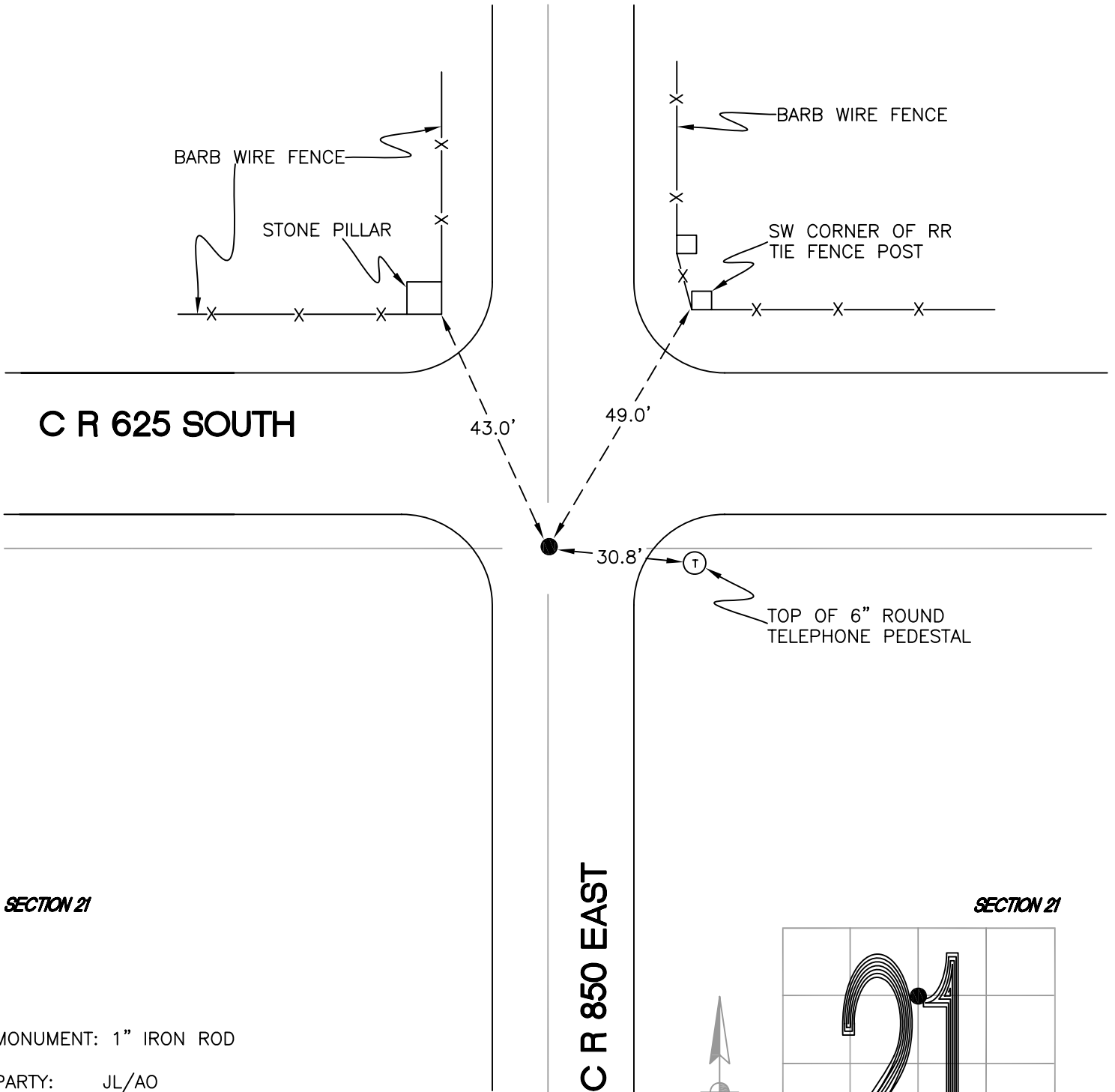
NORTH BEND TOWNSHIP

T 32 N, R 1 W

O11

SECTION 21

SECTION 21



SECTION 21

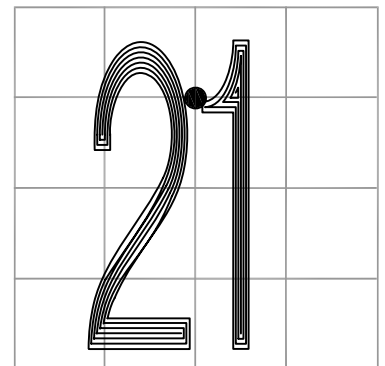
SECTION 21

MONUMENT: 1" IRON ROD

PARTY: JL/AO

DATE: 6/4/12

COMMENTS: MONUMENT IS 19' S OF 625 S AND
2' W OF 850 E
FOUND IN 1990 BY DWC/BW.



CORNER LOCATION IN THE SECTION

O11