

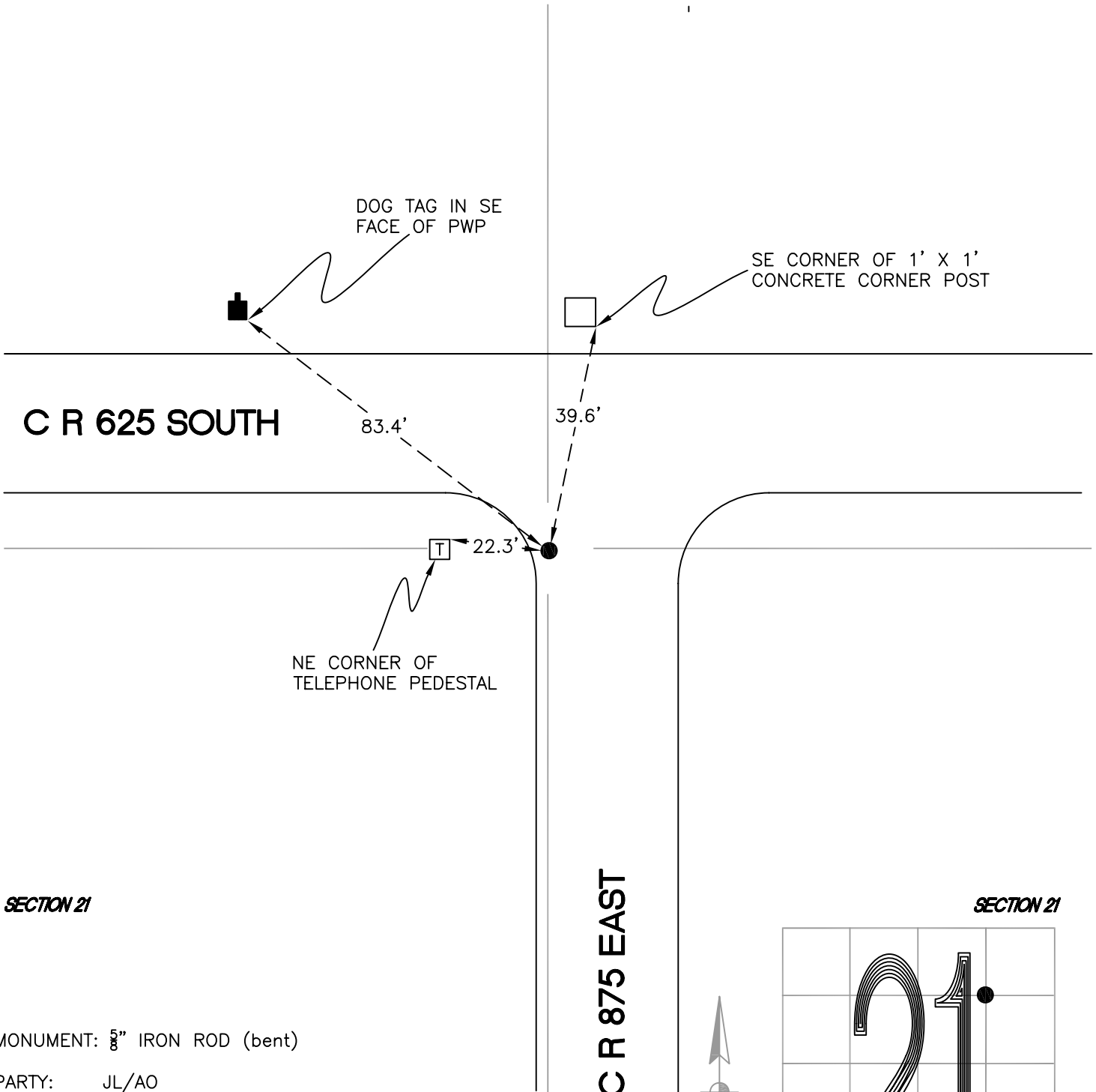
# NORTH BEND TOWNSHIP

T 32 N, R 1 W

## O12

SECTION 21

SECTION 21



SECTION 21

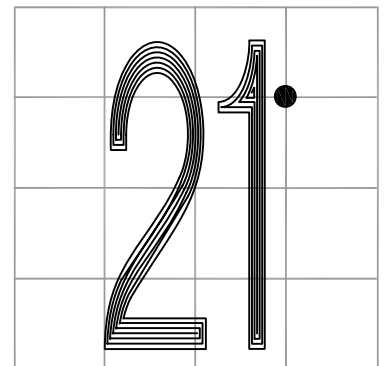
SECTION 21

MONUMENT: 5/8" IRON ROD (bent)

PARTY: JL/AO

DATE: 6/4/12

COMMENTS: ALL MEASUREMENTS TAKEN TO STRAIGHT PORTION OF IRON ROD. 21' S OF  $\phi$  OF 625 S AND 8' W OF  $\phi$  OF 875 E.



CORNER LOCATION IN THE SECTION

# O12