

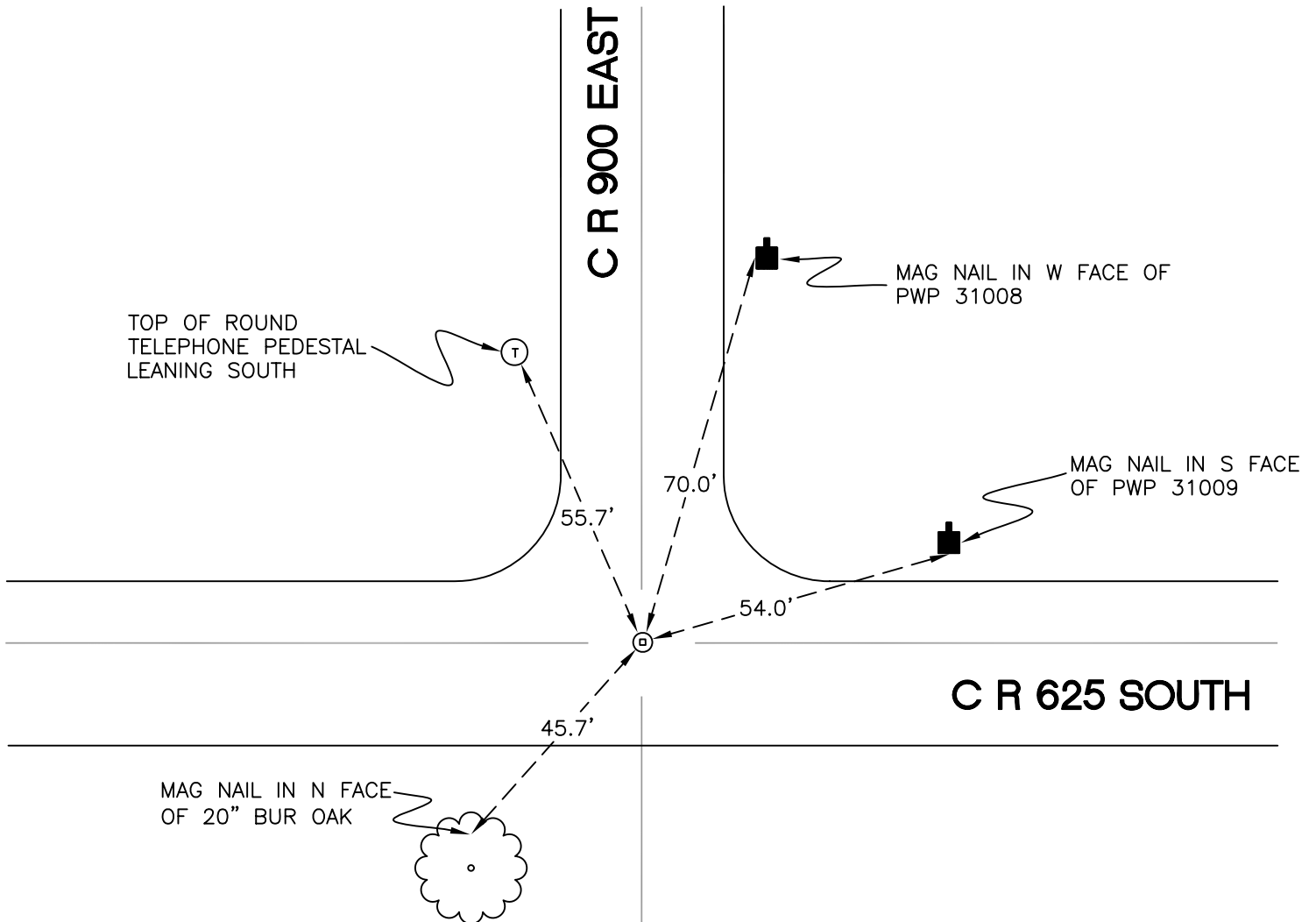
# NORTH BEND TOWNSHIP

T 32 N, R 1 W

## O13

SECTION 21

SECTION 22



SECTION 21

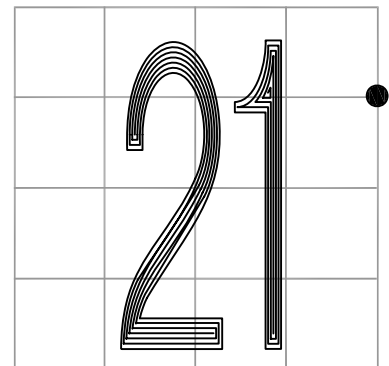
SECTION 22

MONUMENT: RAILROAD CROSSING BOLT

PARTY: JL/AO

DATE: 6/4/12

COMMENTS: 2" BELOW GRADE; 2' N OF  $\odot$  OF 625 S.  
FOUND IN 1984 BY RLP.



CORNER LOCATION IN THE SECTION

## O13