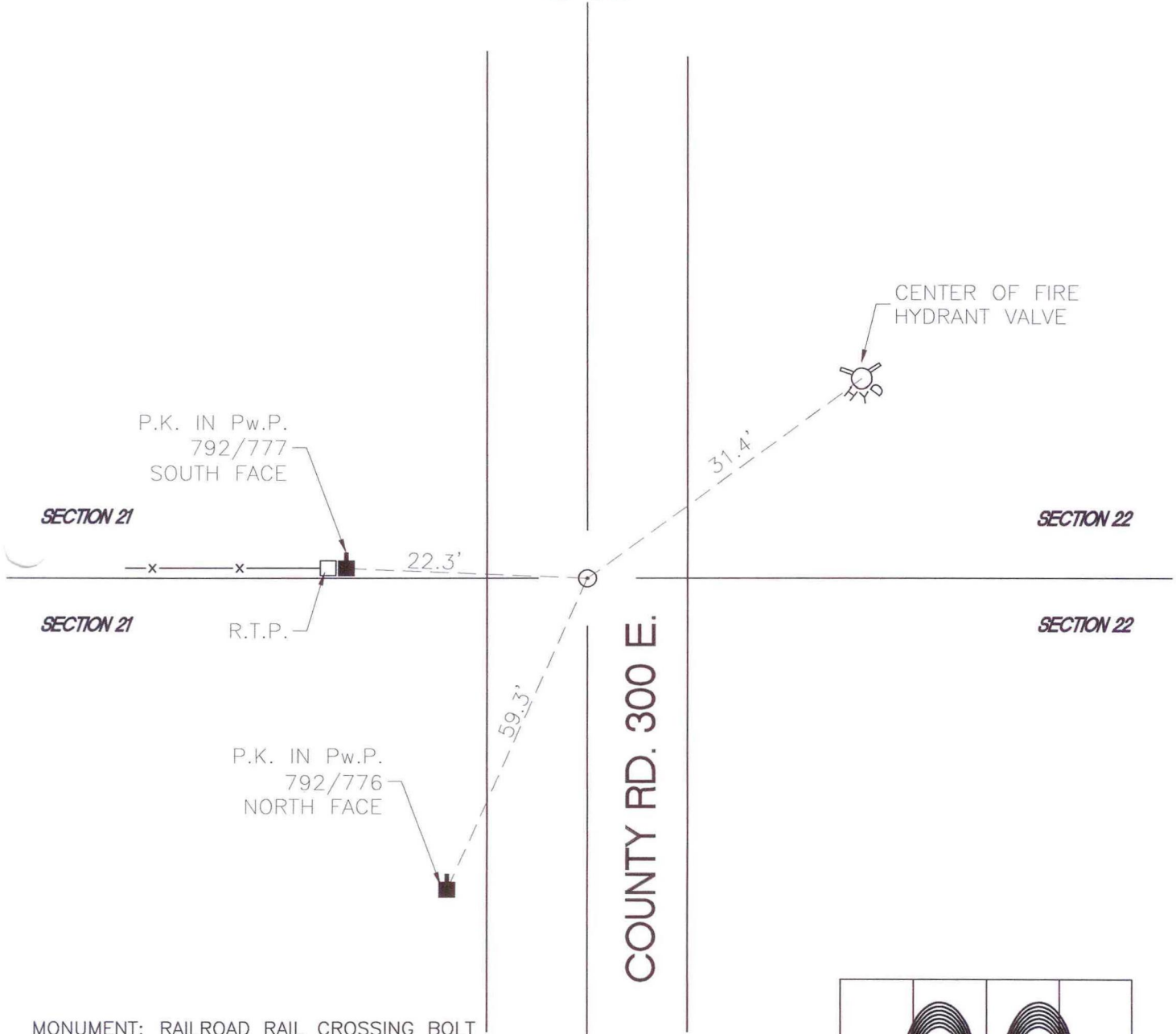


CENTER TOWNSHIP

T 33 N, R 2 W

O13



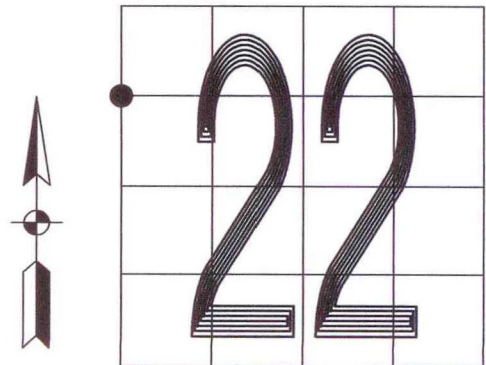
MONUMENT: RAILROAD RAIL CROSSING BOLT

CORNER OF: RECORD USE

PARTY: VHJ / JH

DATE: 12-1-2000

COMMENTS: 1" BELOW GRADE



CORNER LOCATION IN THE SECTION