

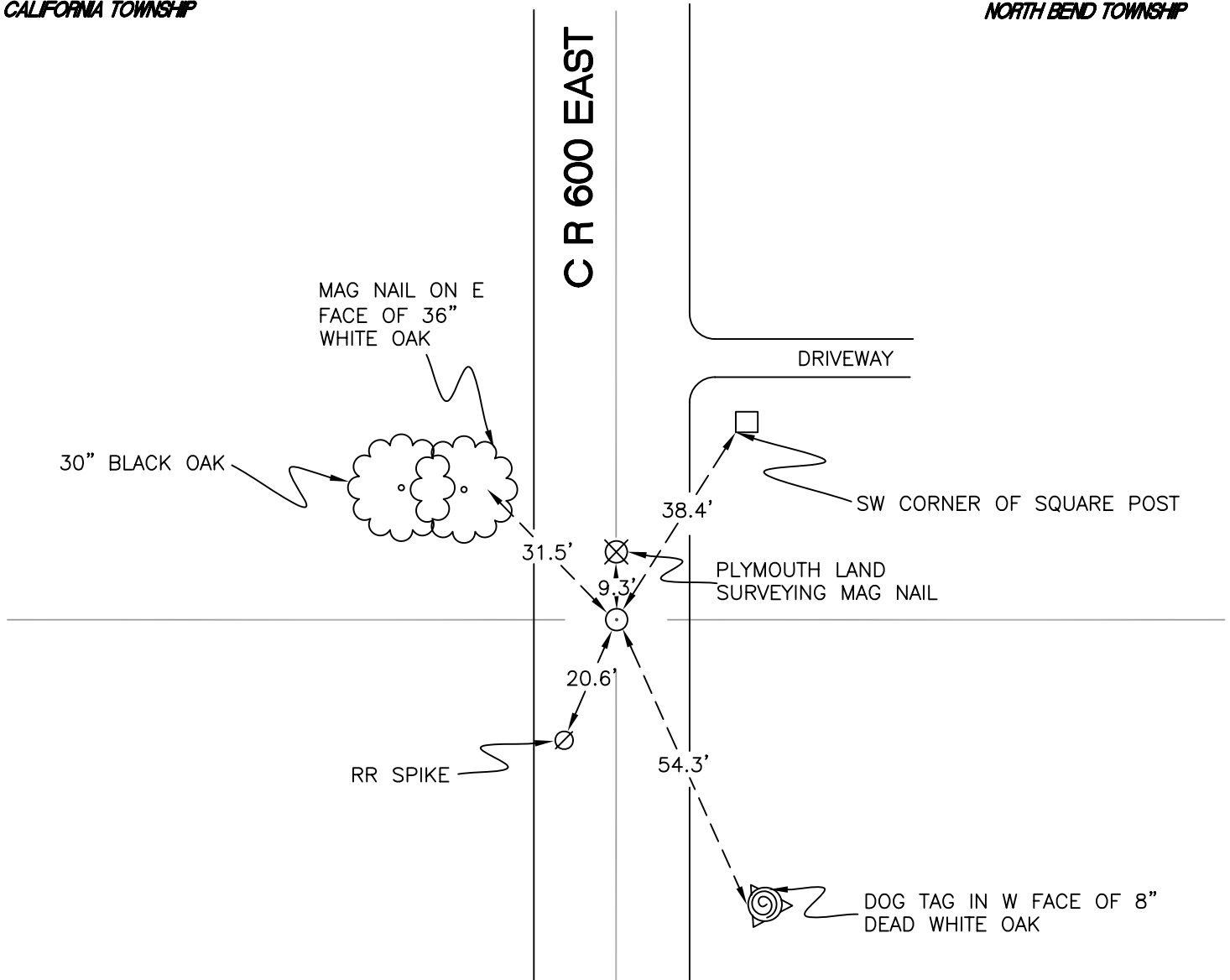
CALIFORNIA TOWNSHIP

T 32 N, R 2 W

O25

SECTION 24
CALIFORNIA TOWNSHIP

SECTION 19
NORTH BEND TOWNSHIP



SECTION 24
CALIFORNIA TOWNSHIP

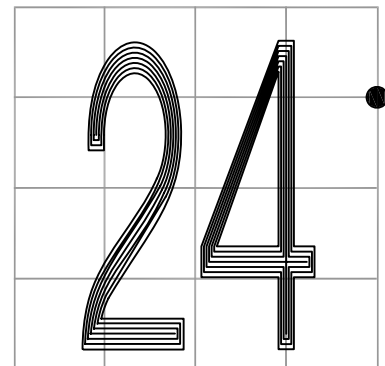
SECTION 19
NORTH BEND TOWNSHIP

MONUMENT: (F) STONE; (S) RAIL BOLT OVER STONE

PARTY: DPS/JL/AO

DATE: 6/4/12

COMMENTS: STONE FOUND IN 1981 BY VHJ.



CORNER LOCATION IN THE SECTION

O25