

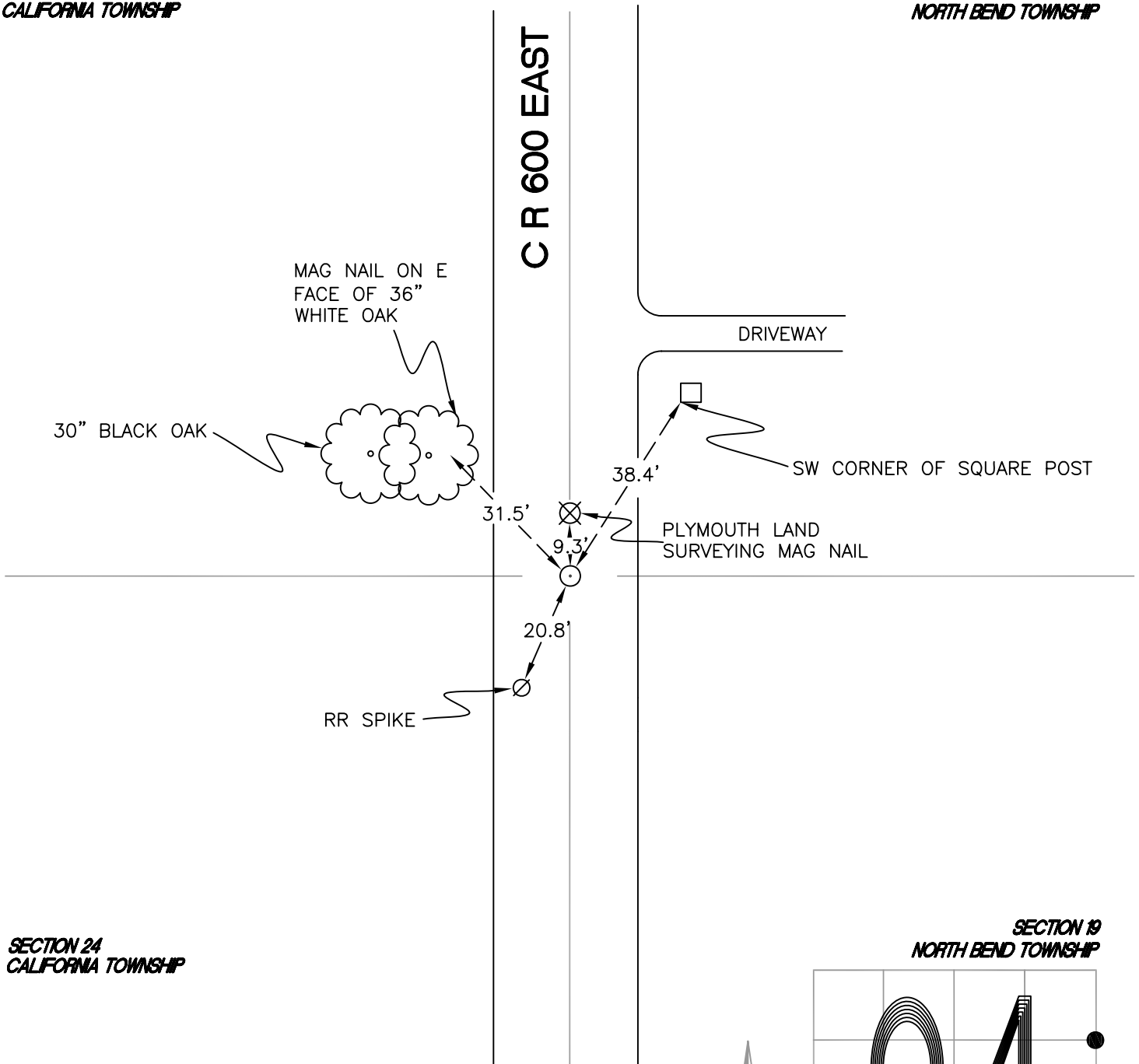
CALIFORNIA TOWNSHIP

T 32 N, R 2 W

O25

SECTION 24
CALIFORNIA TOWNSHIP

SECTION 19
NORTH BEND TOWNSHIP



SECTION 24
CALIFORNIA TOWNSHIP

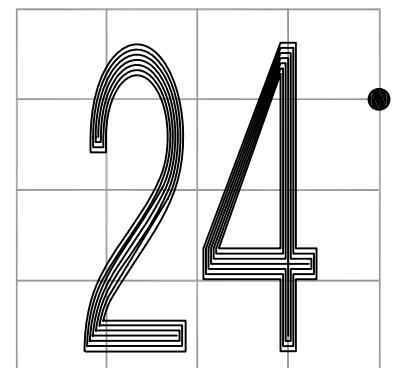
SECTION 19
NORTH BEND TOWNSHIP

MONUMENT: RAIL BOLT w/NUT OVER STONE

PARTY: DPS/JL

DATE: 7/7/14

COMMENTS: STONE FOUND IN 1981 BY VHJ. RAIL BOLT SET OVER STONE IN 2012 BY DPS/JL/AO.



CORNER LOCATION IN THE SECTION

O25