

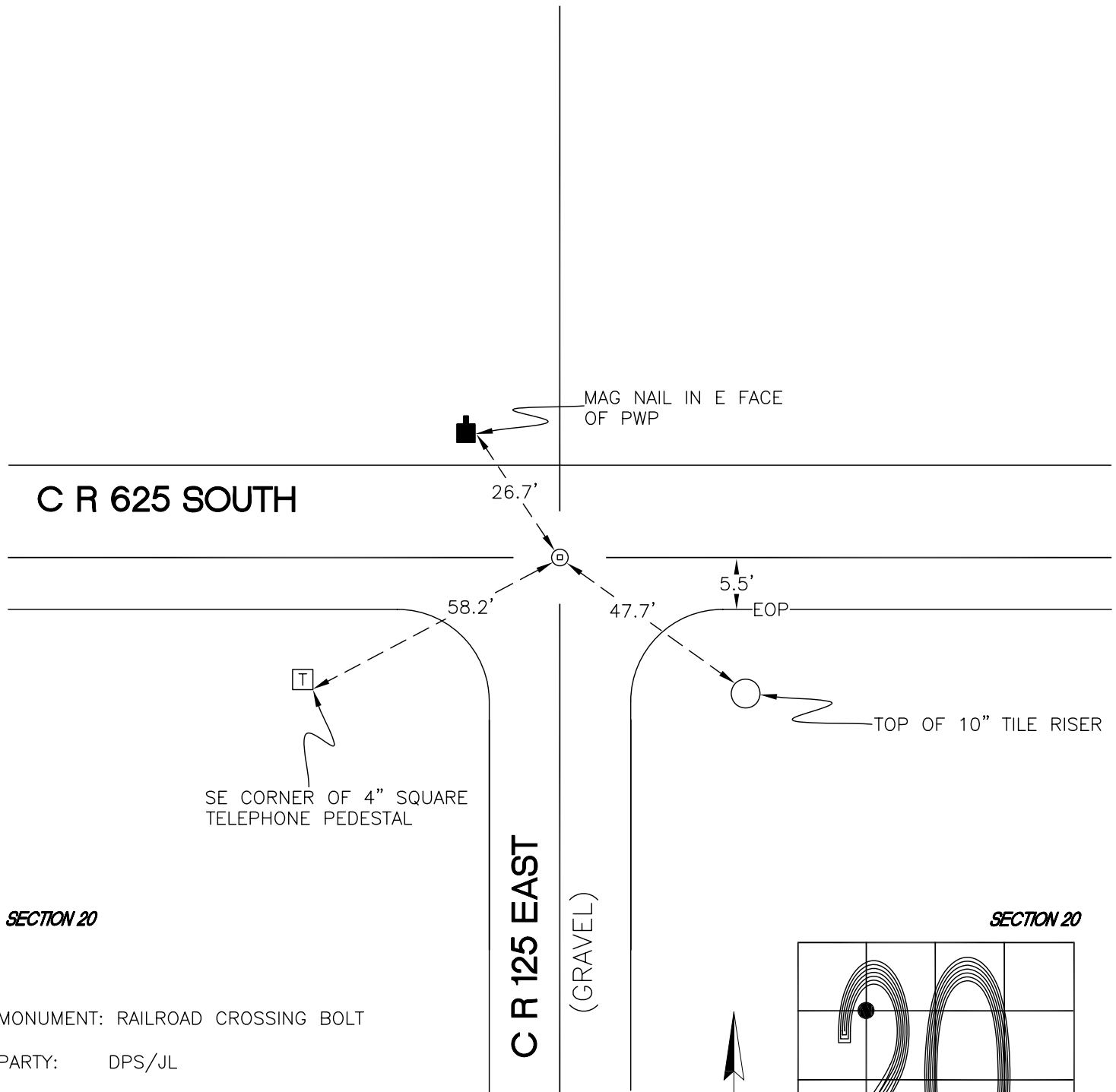
CALIFORNIA TOWNSHIP

T 32 N, R 2 W

O6

SECTION 20

SECTION 20



SECTION 20

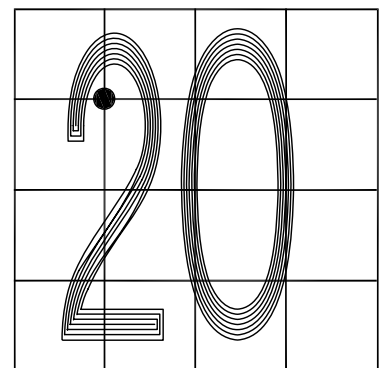
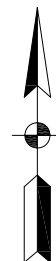
SECTION 20

MONUMENT: RAILROAD CROSSING BOLT

PARTY: DPS/JL

DATE: 5-3-2010

COMMENTS: NO STONE OR IRON PIPE FOUND FROM 1963 SECTION CORNER REFERENCE SHEET. CROSSING BOLT REPLACES A FOUND RAILROAD SPIKE. MONUMENT IS 2.5' S OF ϕ OF 625 S.



CORNER LOCATION IN THE SECTION

O6