

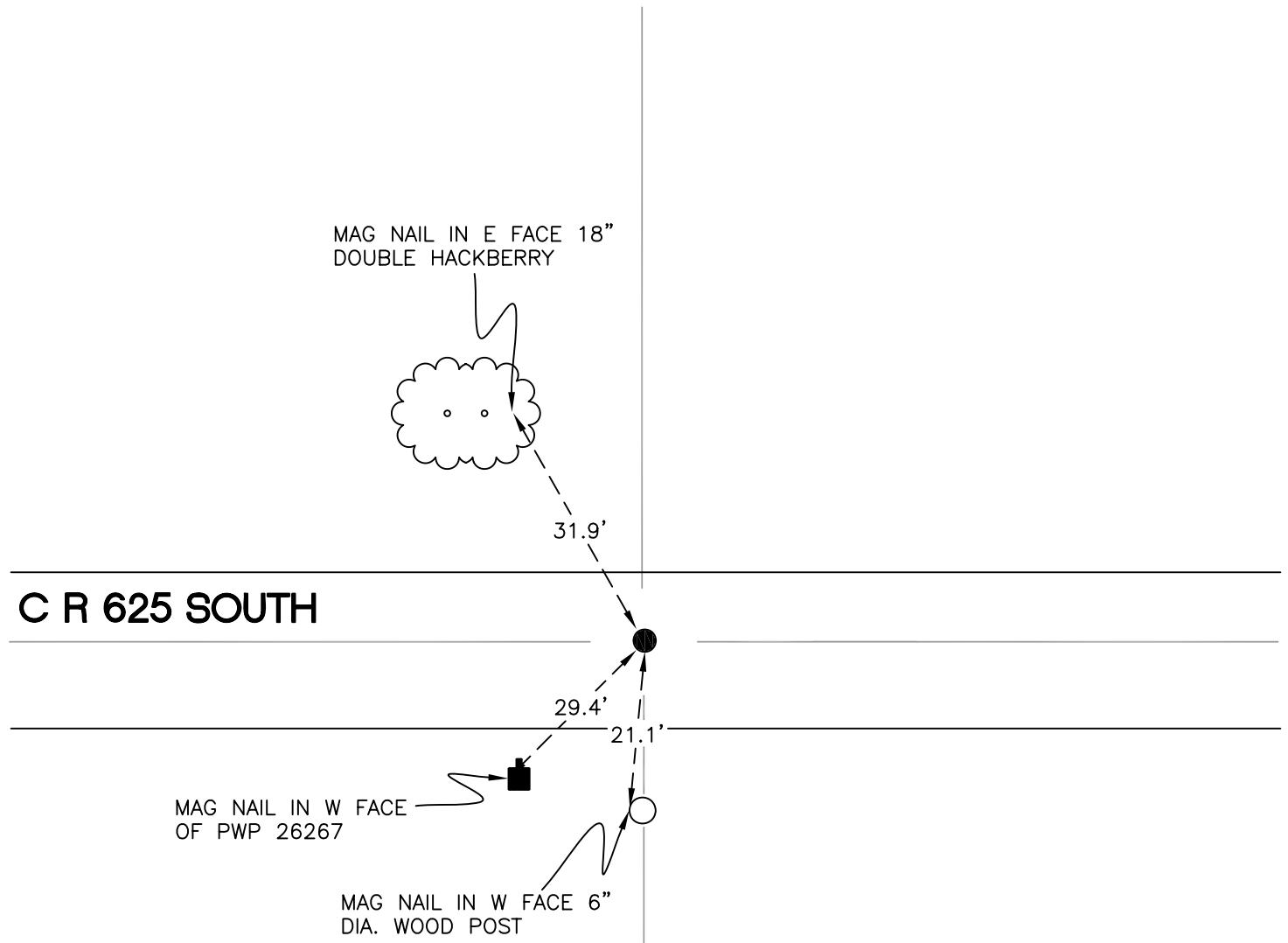
# CALIFORNIA TOWNSHIP

T 32 N, R 2 W

## 07

SECTION 20

SECTION 20



SECTION 20

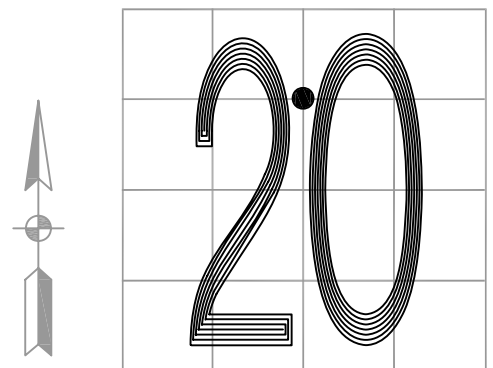
SECTION 20

MONUMENT:  $\frac{3}{4}$ " IRON ROD REPLACES RR SPIKE  
OVER STONE w/ "+"

PARTY: DPS/JL

DATE: 7/15/14

COMMENTS: STONE IS 8" BELOW GRADE. STONE SET  
IN 1887 AND FOUND IN 1981. RR  
CROSSING BOLTS SET AS INDICATORS IN  
1981 WERE REMOVED. MONUMENT IS  
1' N OF  $\phi$  OF 625 S.



CORNER LOCATION IN THE SECTION

## 07