

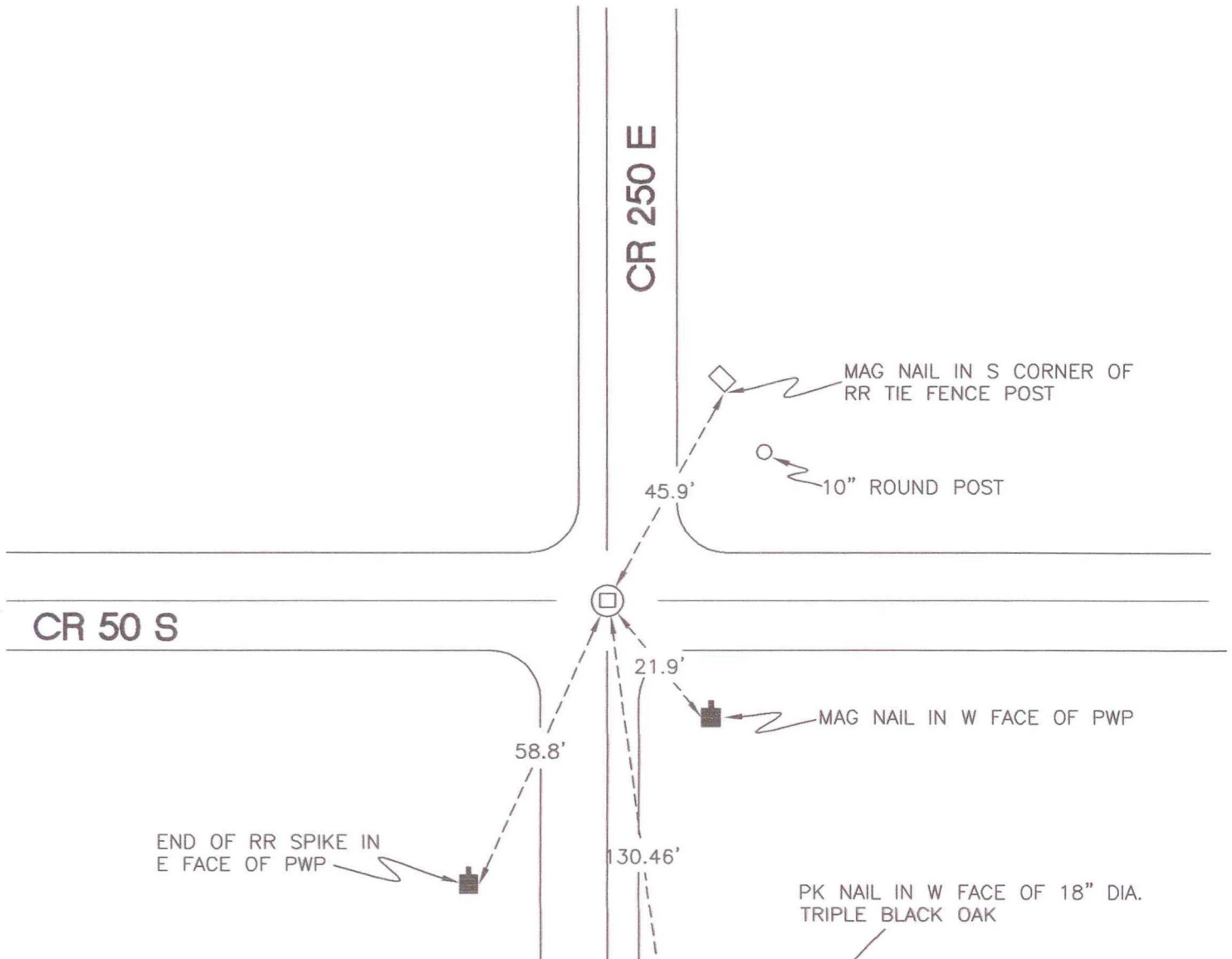
# CENTER TOWNSHIP

T33N, R2W

## P11

SECTION 21

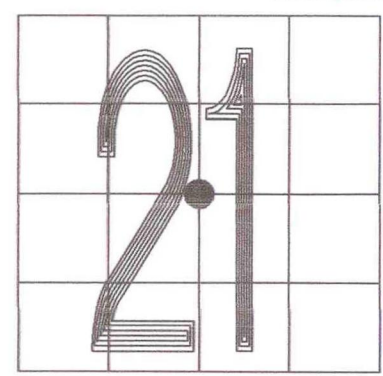
SECTION 21



SECTION 21

SECTION 21

MONUMENT: RAILROAD CROSSING BOLT  
CORNER OF: RECORD  USE   
PARTY: DPS/JL  
ATE: 10-05-2007  
COMMENTS: PREVIOUS MONUMENT WAS DESTROYED BY REPAVING



CORNER LOCATION IN THE SECTION

# P11