

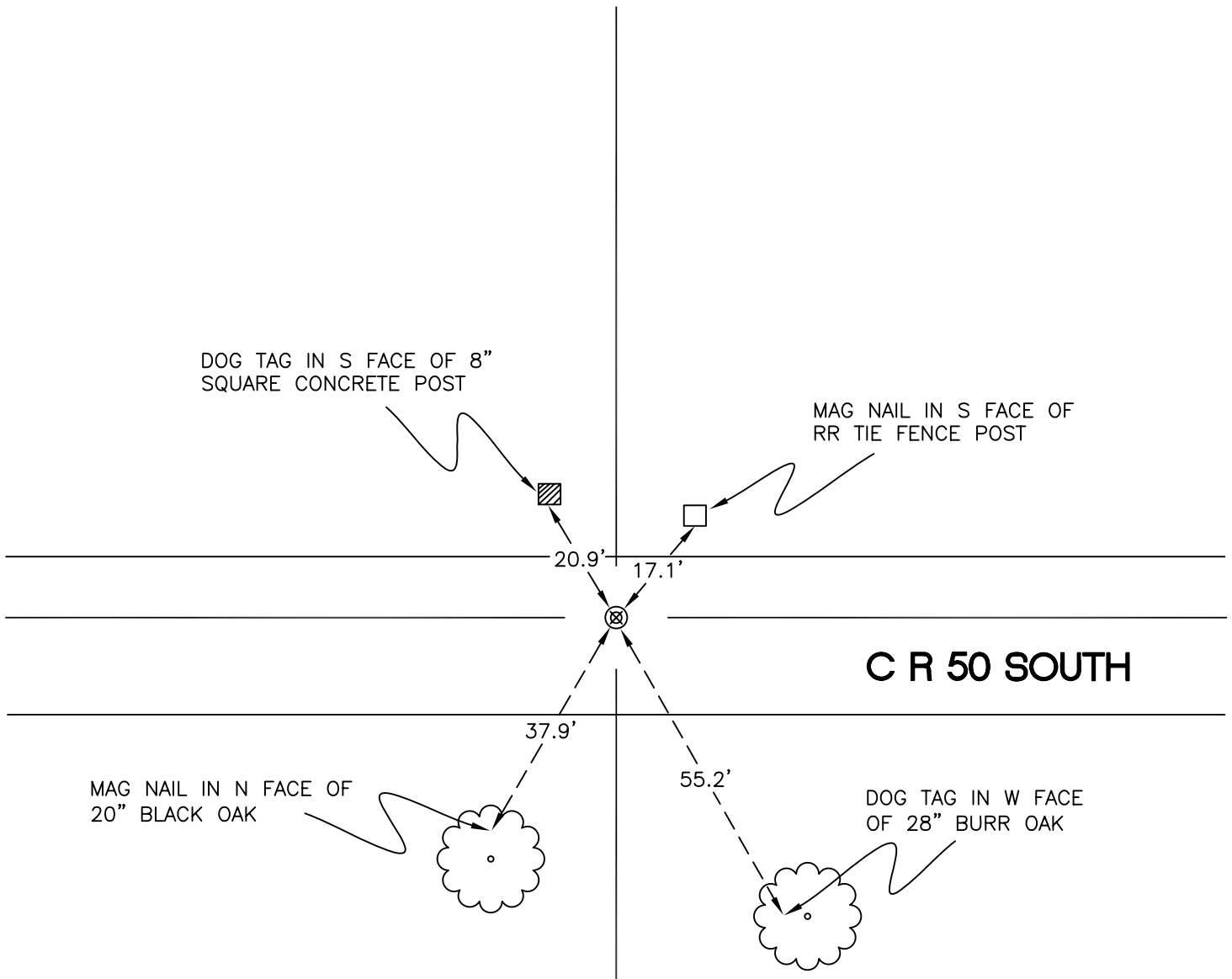
WASHINGTON TOWNSHIP

T 33 N, R 1 W

P11

SECTION 21

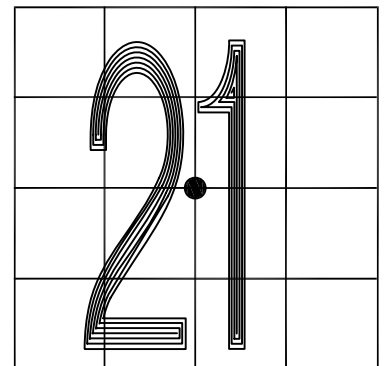
SECTION 21



SECTION 21

SECTION 21

MONUMENT: 1/2" IRON PIPE w/ MAG NAIL INSIDE
CORNER OF: RECORD USE
PARTY: JL/PM
DATE: 5-16-2008
COMMENTS: 4' N OF \mathcal{C} OF 50S



CORNER LOCATION IN THE SECTION

P11