

# NORTH BEND TOWNSHIP

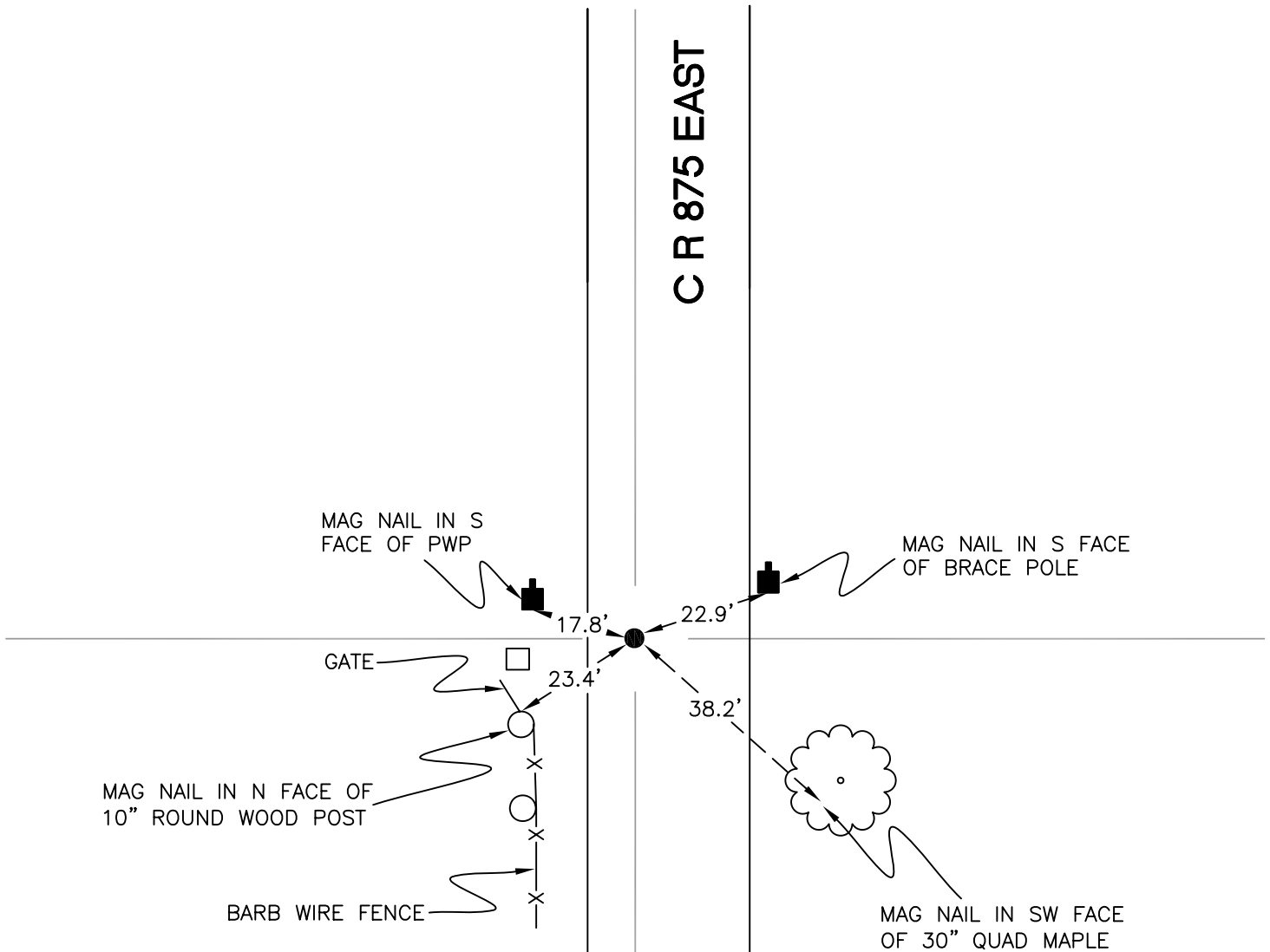
T 32 N, R 1 W

## P12

SECTION 21

SECTION 21

C R 875 EAST



SECTION 21

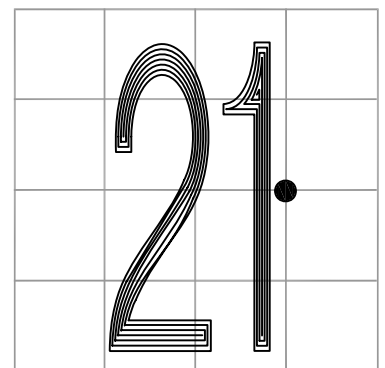
SECTION 21

MONUMENT: 5/8" IRON ROD

PARTY: JL/AO

DATE: 6/4/12

COMMENTS: MONUMENT IS 3" BELOW GRADE AND 5' W  
CL OF 875 E



CORNER LOCATION IN THE SECTION

# P12