

SECTION CORNER REFERENCE

SECTION 22 TOWNSHIP 34-N RANGE 2-W
(Description of Corner Location) WEST QUARTER CORNER
DAVIS TWP.,
STARKE COUNTY, INDIANA

P13

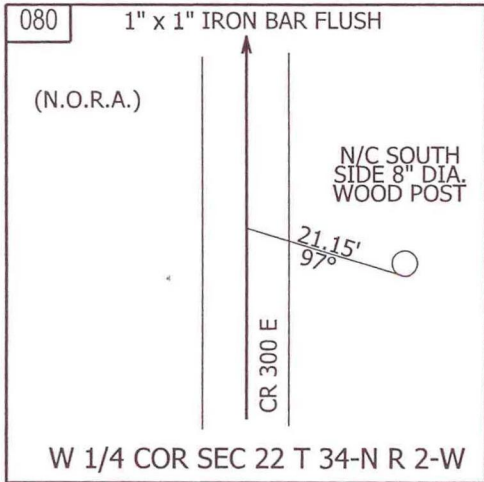
P13



COORDINATES
 NAD '83 IN E. ZONE
 NAD '83 IN W. ZONE
 LOCAL GRID
Units: US FEET
Pt.#: 080
N: 9,267.720
E: 4,715.138

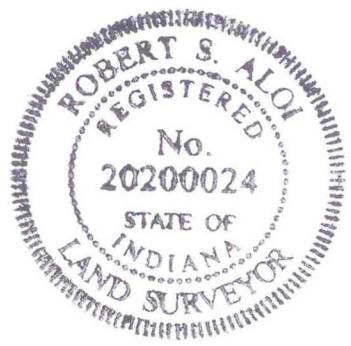
TYPE OF MON.: 1" x 1" IRON BAR
DEPTH: FLUSH
UNCERTAINTY:
BY: LAPORTE SURVEY
DATE: JULY 2009
DES.NO.: 0500068

STATE FORM 40180 (R2/2-04)



REFERENCED BY: INDOT

COMMENTS: MONUMENT NOT PREVIOUSLY RECORDED IN SURVEYOR'S OFFICE
NEEDS TO BE VERIFIED BY SURVEY



P13