

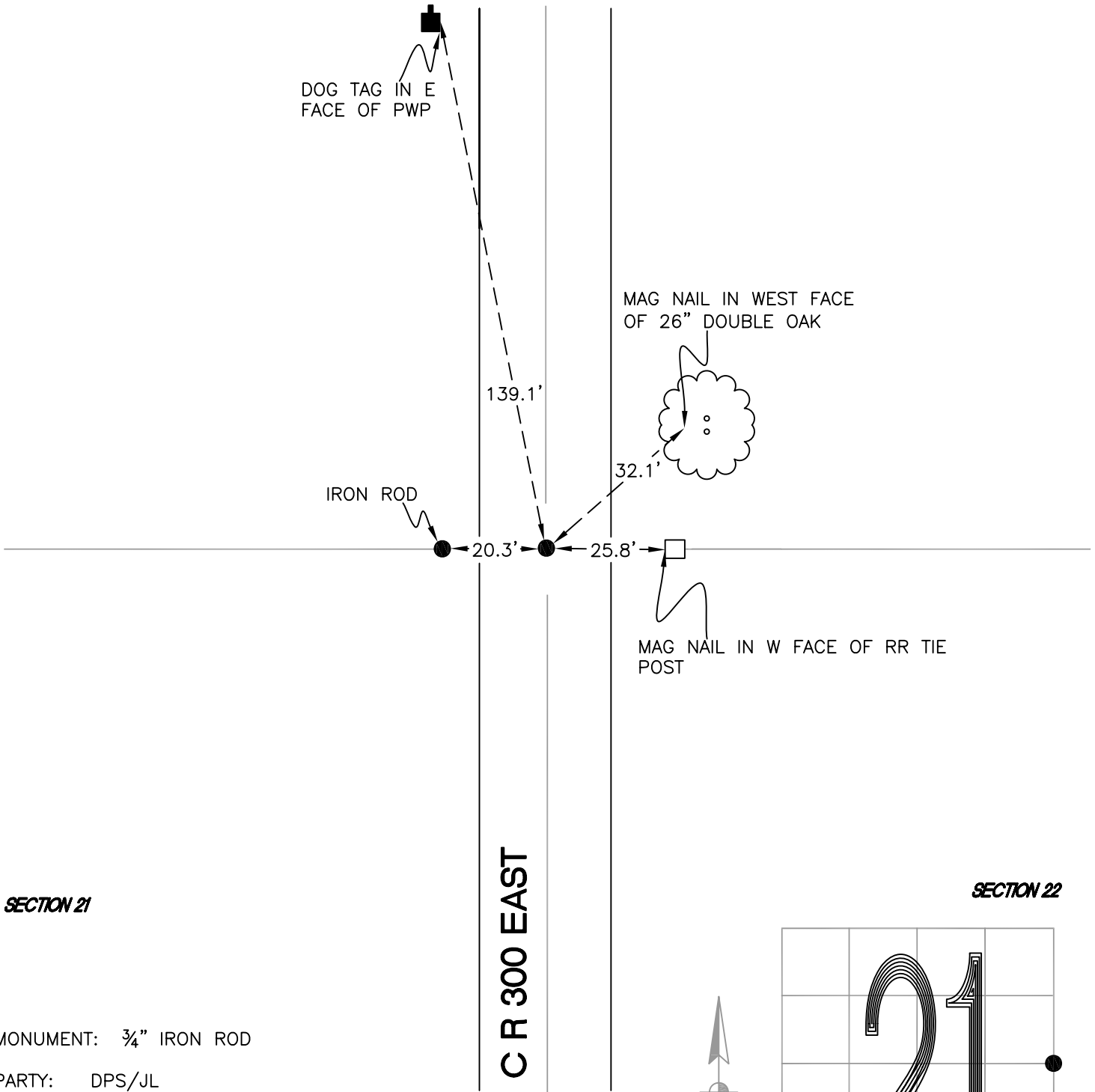
CALIFORNIA TOWNSHIP

T 32 N, R 2 W

P13

SECTION 21

SECTION 22



SECTION 21

SECTION 22

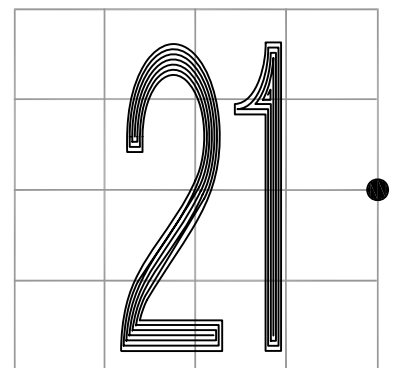
MONUMENT: 3/4" IRON ROD

PARTY: DPS/JL

DATE: 7/14/14

COMMENTS: MONUMENT SET BY DWC/AW IN 1991.

CR 300 EAST



CORNER LOCATION IN THE SECTION

P13