

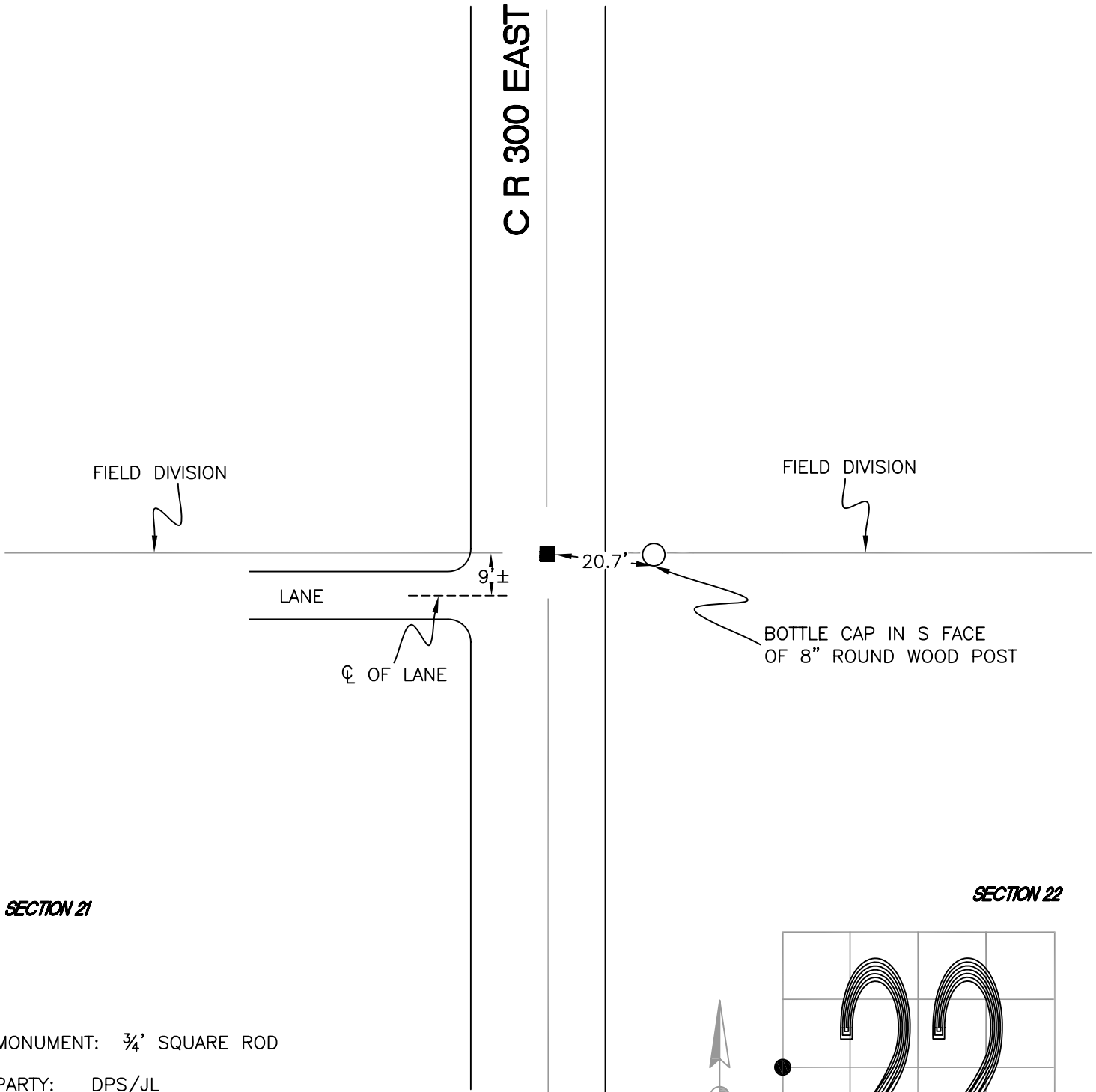
DAVIS TOWNSHIP

T 34 N, R 2 W

P13

SECTION 21

SECTION 22



SECTION 21

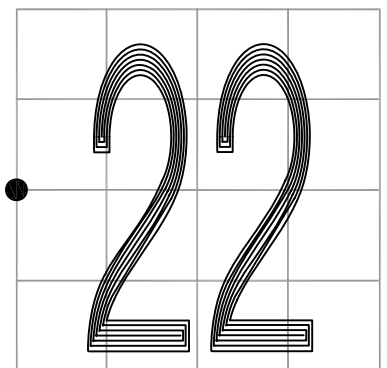
SECTION 22

MONUMENT: 3/4' SQUARE ROD

PARTY: DPS/JL

DATE: 3/17/16

COMMENTS: 1' E OF ϕ OF 300E. FOUND BY INDOT IN 2009.



CORNER LOCATION IN THE SECTION

P13