

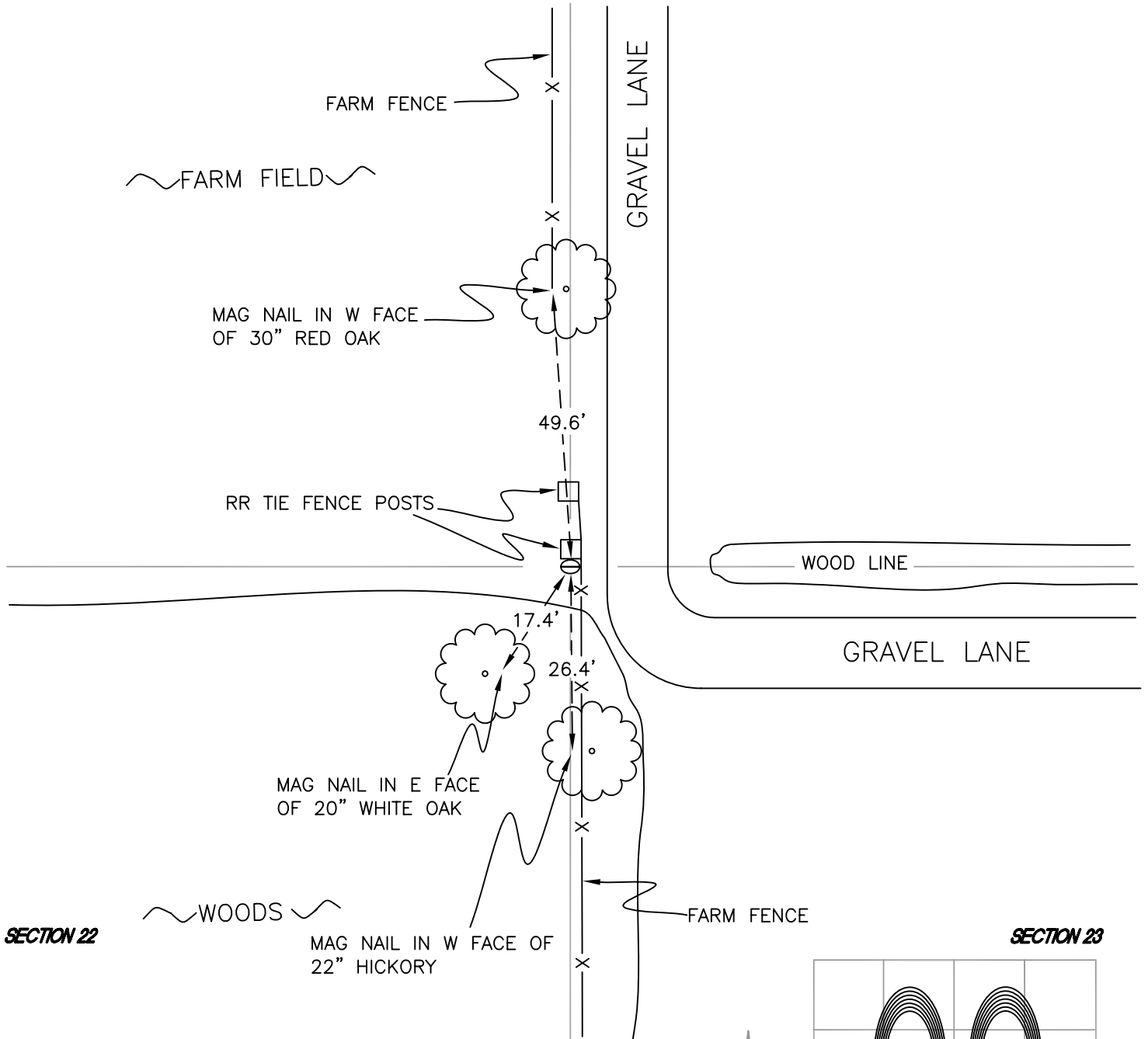
NORTH BEND TOWNSHIP

T 32 N, R 1 W

P17

SECTION 22

SECTION 23



SECTION 22

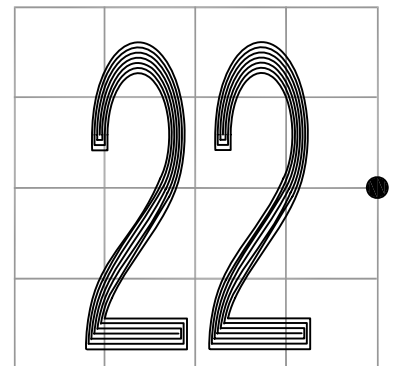
SECTION 23

MONUMENT: PINCH PIPE

PARTY: JL/AO

DATE: 6/6/12

COMMENTS: RR TIE POST IS UP AGAINST THE MONUMENT ON THE NORTH SIDE



CORNER LOCATION IN THE SECTION

P17