

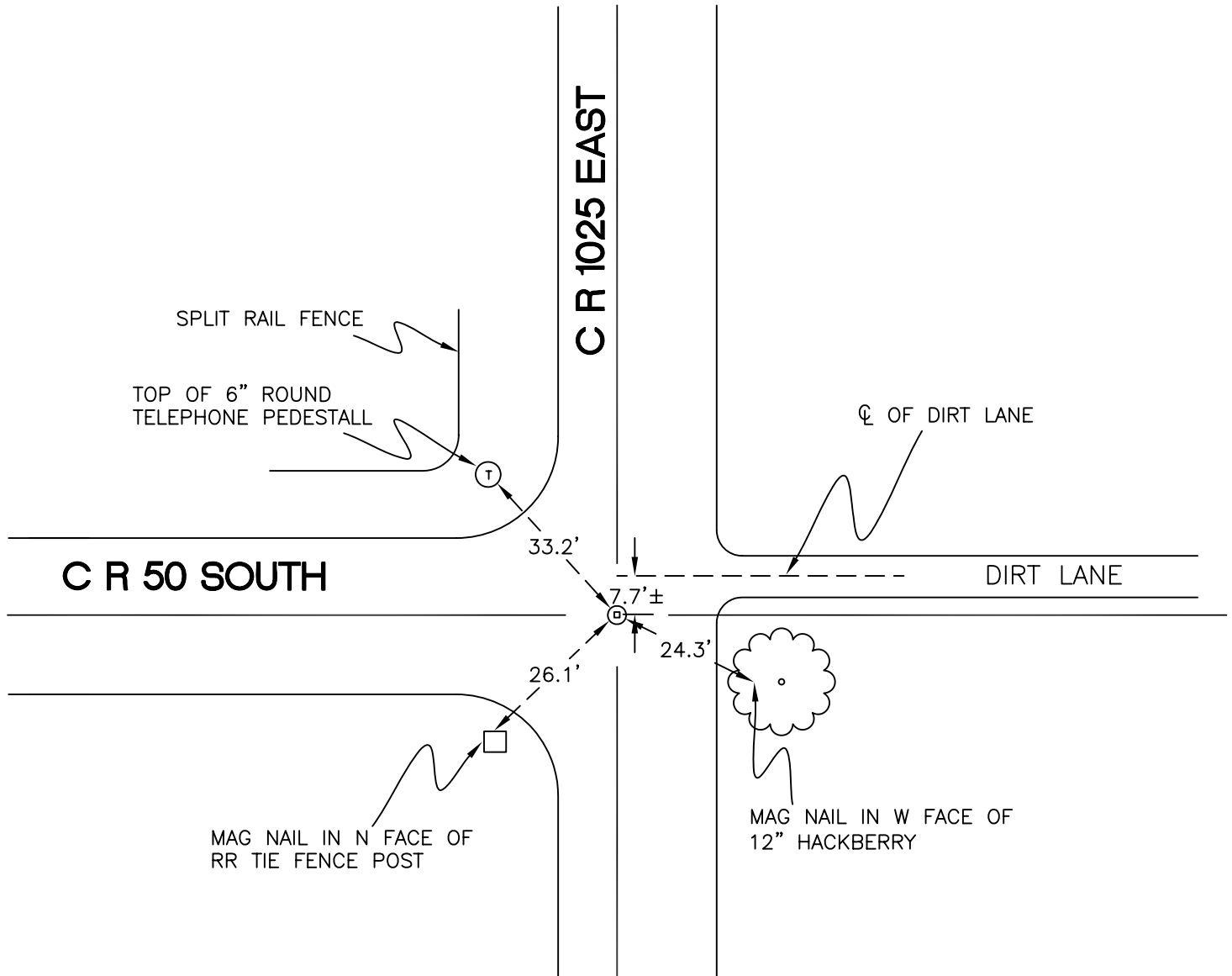
WASHINGTON TOWNSHIP

T 33 N, R 1 W

P18

SECTION 23

SECTION 23



SECTION 23

SECTION 23

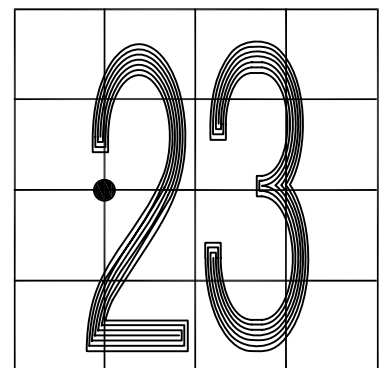
MONUMENT: RR CROSSING BOLT REPLACES RR SPIKE

CORNER OF: RECORD USE

PARTY: JL/PM

DATE: 6-18-2008

COMMENTS: 2' W OF CL OF 1025E; 1" BELOW GRADE



CORNER LOCATION IN THE SECTION

P18