

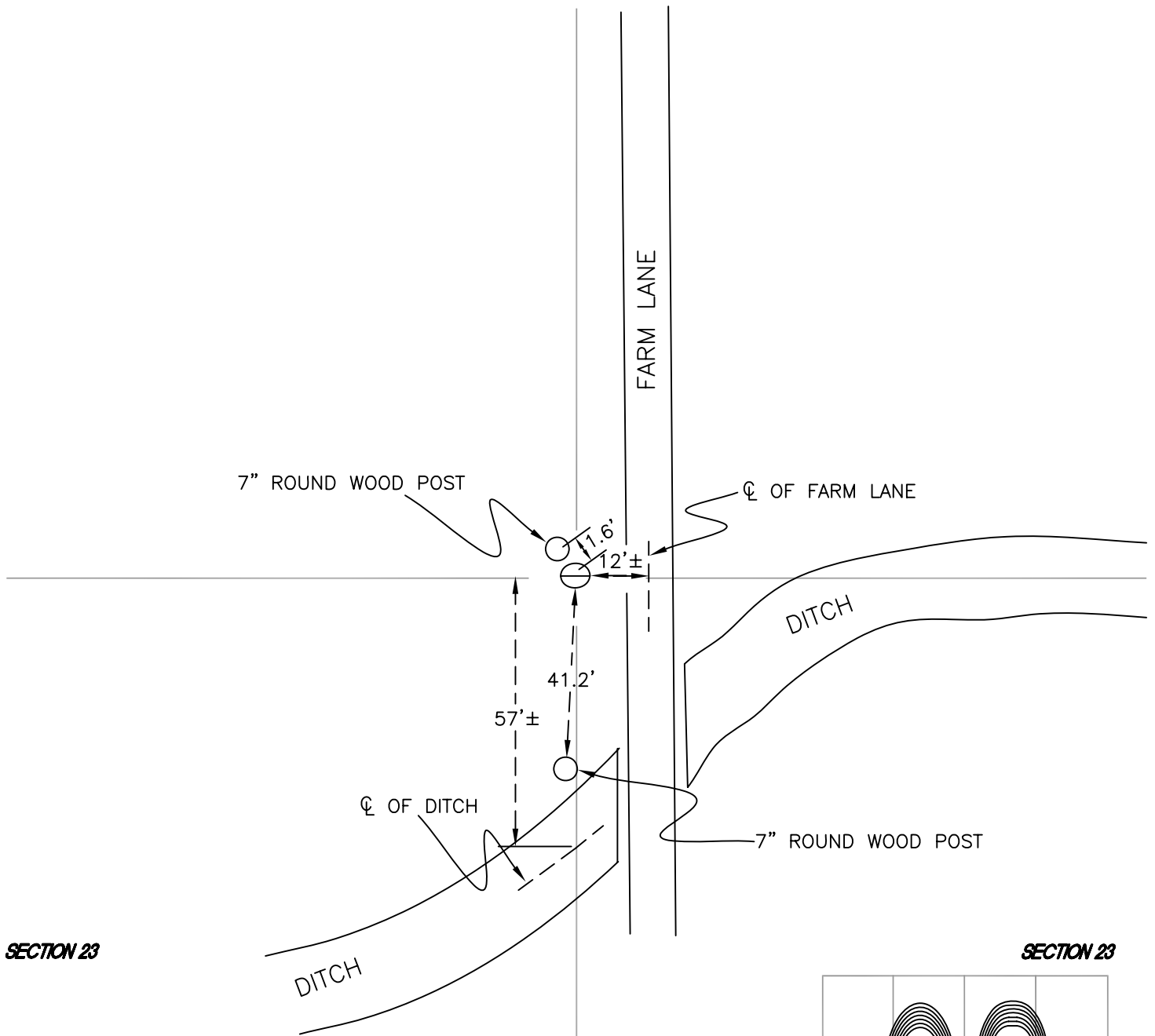
NORTH BEND TOWNSHIP

T 32 N, R 1 W

P19

SECTION 23

SECTION 23



SECTION 23

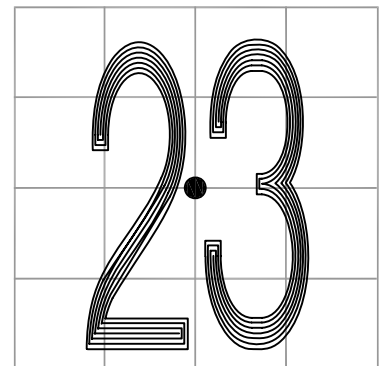
SECTION 23

MONUMENT: $\frac{3}{4}$ " PINCH PIPE

PARTY: JL/AO

DATE: 6/26/12

COMMENTS: 4" BELOW GRADE. 1 $\frac{1}{2}$ " PIPE w/ TEE
 3" N OF MONUMENT; 7" ROUND WOOD
 POST 1.6' NW OF MONUMENT. FOUND
 AND USED IN A SURVEY BY DAAKE &
 ASSOCIATES IN 1994.



CORNER LOCATION IN THE SECTION

P19