

SECTION CORNER REFERENCE

SECTION 23 TOWNSHIP 34-N RANGE 2-W
 (Description of Corner Location) EAST QUARTER CORNER
DAVIS TWP.,
STARKE COUNTY, INDIANA

P21

P21

COORDINATES

NAD '83 IN E. ZONE

NAD '83 IN W. ZONE

LOCAL GRID

Units: US FEET

Pt. #: 088

N: 9,263.480

E: 15,311.172

TYPE OF MON.: 1" X 1" IRON BOLT

DEPTH: FLUSH

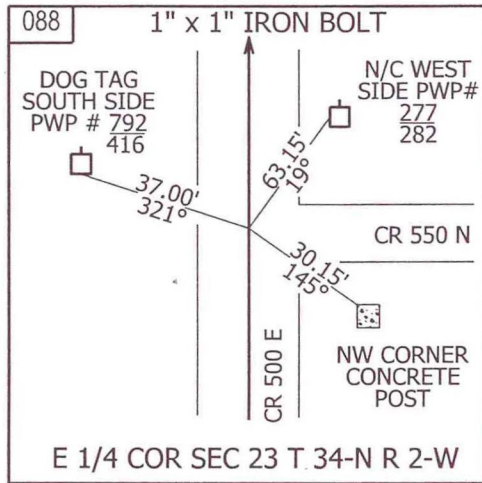
UNCERTAINTY: _____

BY: COUNTY SURVEYOR

DATE: JULY 2009

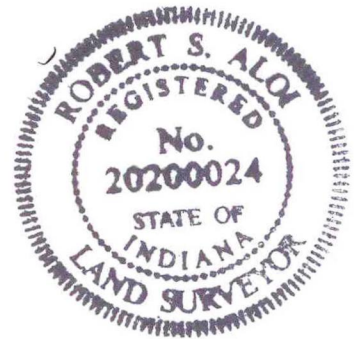
DES.NO.: 0500068

STATE FORM 40180 (R2/2-04)



REFERENCED BY: INDOT

COMMENTS: REFERENCES MATCH TO ONES
 FOUND IN 1993
 1" X 1" IRON BAR IS MOST LIKELY
 THE TOP OF A CROSSING BOLT
 AS RECORDED.



P21