

# RAILROAD TOWNSHIP

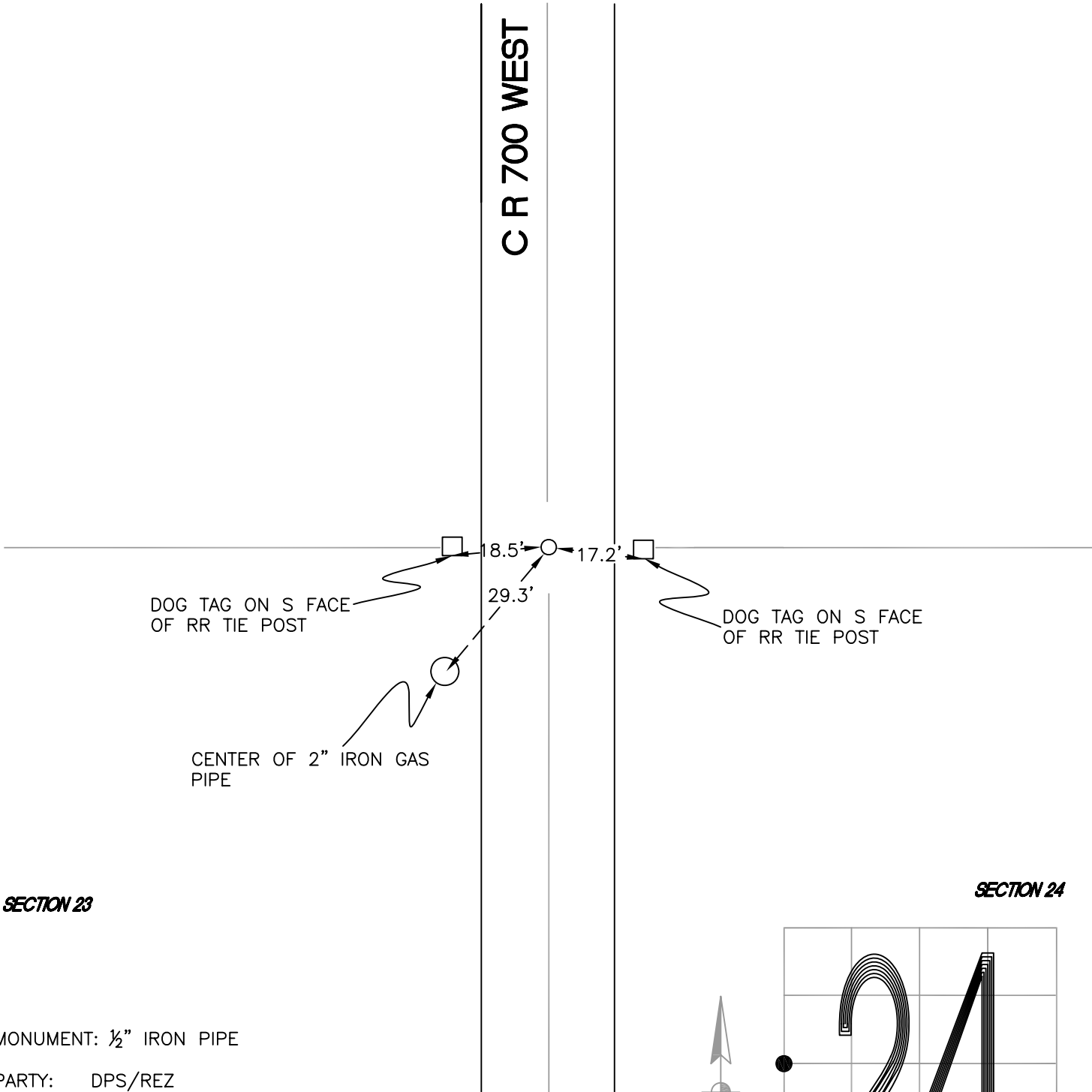
T 32 N, R 4 W

## P21

SECTION 23

SECTION 24

C R 700 WEST



SECTION 23

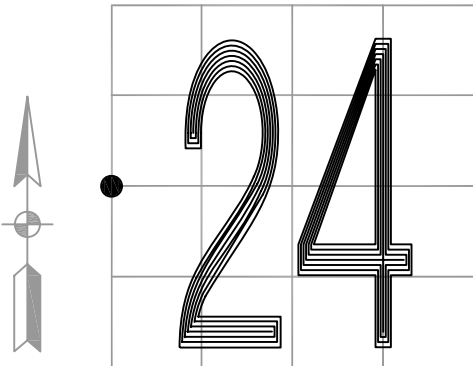
SECTION 24

MONUMENT: 1/2" IRON PIPE

PARTY: DPS/REZ

DATE: 2015

COMMENTS: 0.4' BELOW GRADE. FOUND BY AW/DWC IN 1991.



CORNER LOCATION IN THE SECTION

## P21