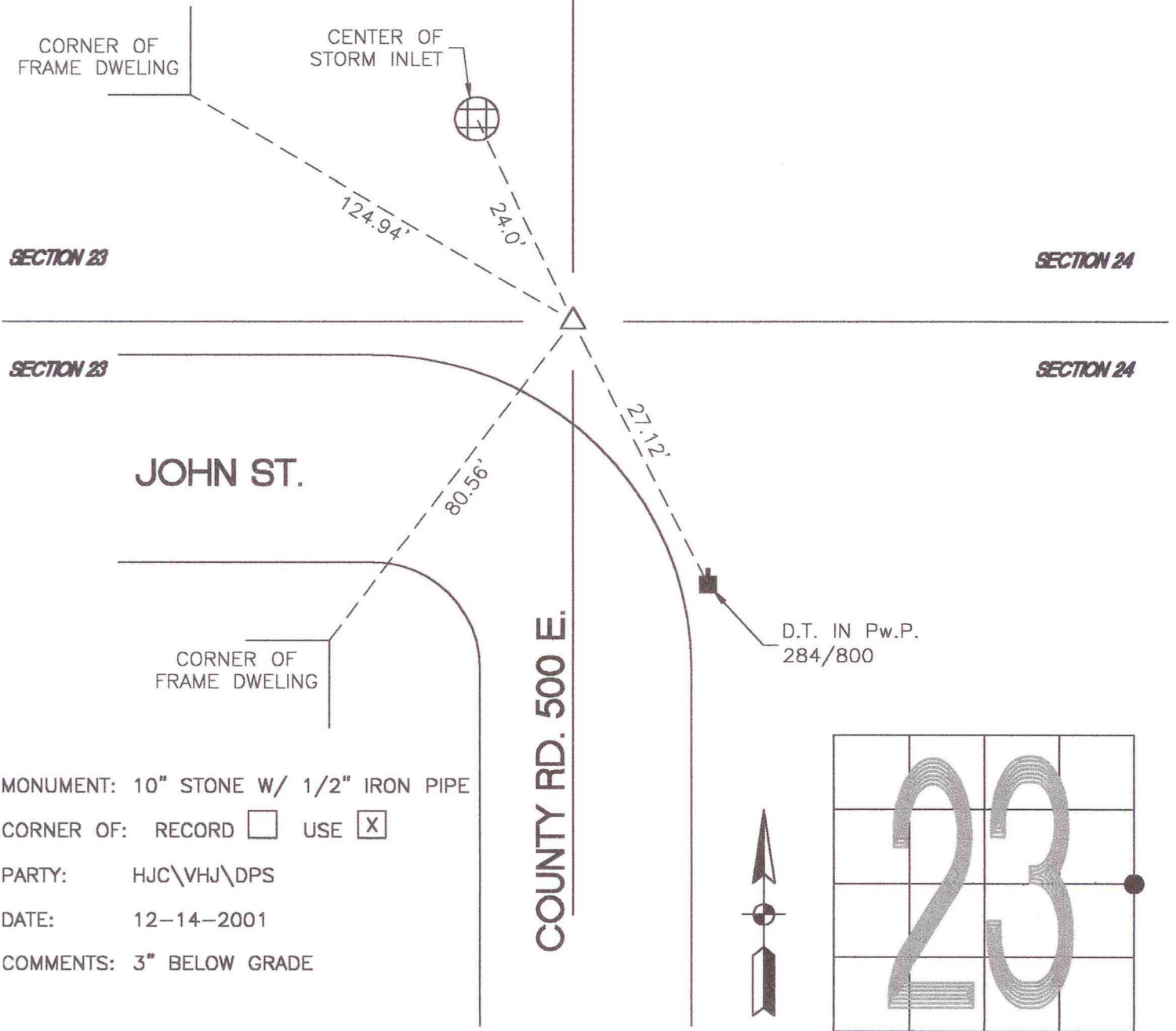


# CENTER TOWNSHIP

T 33 N, R 2 W

## P21



SECTION 23

SECTION 24

SECTION 23

SECTION 24

JOHN ST.

COUNTY RD. 500 E.

D.T. IN Pw.P.  
284/800

CORNER OF  
FRAME DWELING

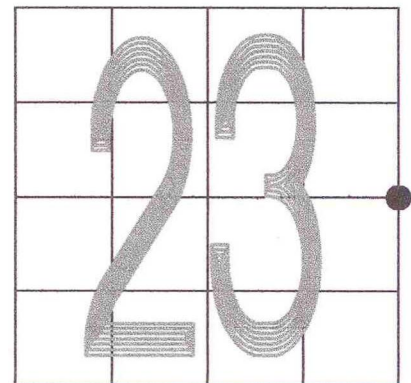
MONUMENT: 10" STONE W/ 1/2" IRON PIPE

CORNER OF: RECORD  USE

PARTY: HJC\VHJ\DPS

DATE: 12-14-2001

COMMENTS: 3" BELOW GRADE



CORNER LOCATION IN THE SECTION