

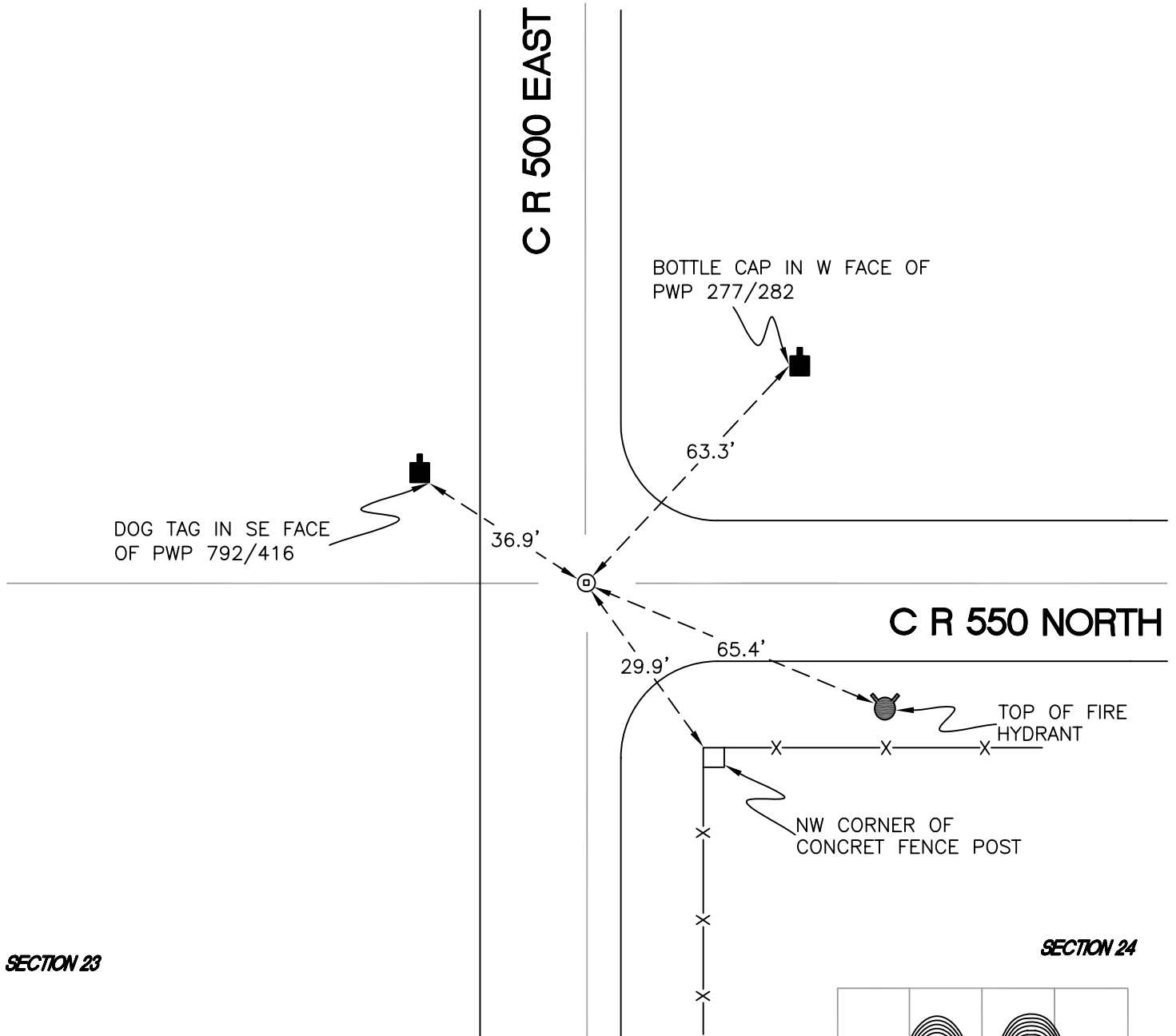
# DAVIS TOWNSHIP

T 34 N, R 2 W

## P21

SECTION 23

SECTION 24

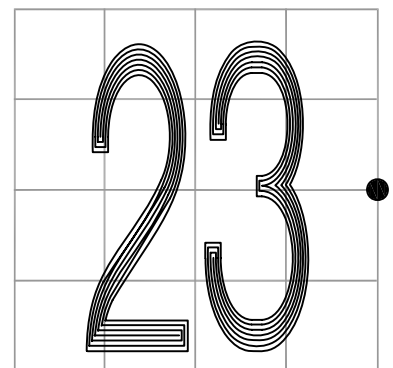


MONUMENT: RAILROAD CROSSING BOLT

PARTY: DPS/JL

DATE: 3/14/16

COMMENTS: 7' E OF  $\mathcal{C}$  OF 500E; 1' N OF  $\mathcal{C}$  OF 550N. FOUND BY INDOT IN 2009 AND VHJ/RC IN 1993. 0.2' BELOW GRADE.



CORNER LOCATION IN THE SECTION

## P21