

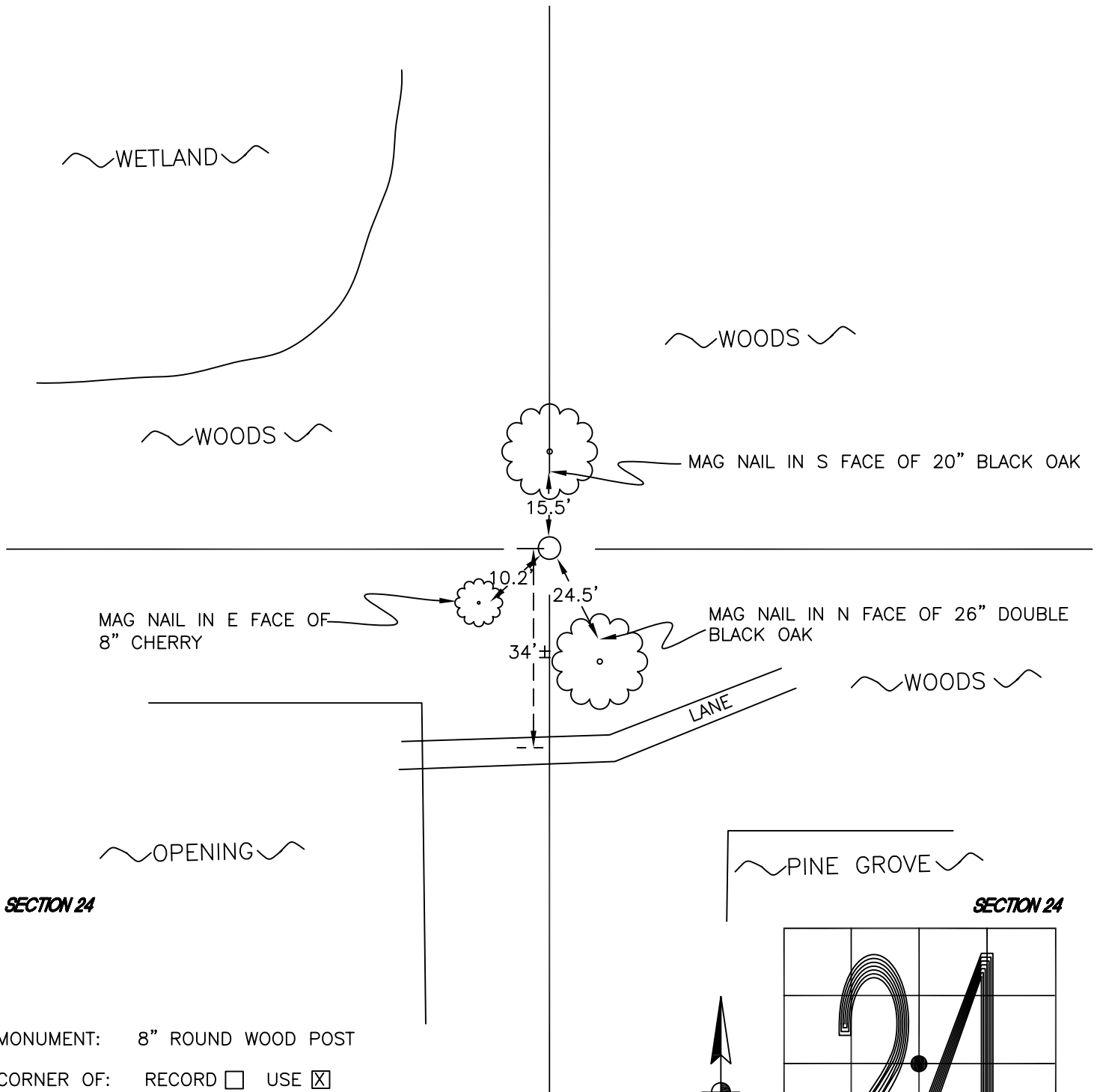
WASHINGTON TOWNSHIP

T 33 N, R 1 W

P23

SECTION 24

SECTION 24



SECTION 24

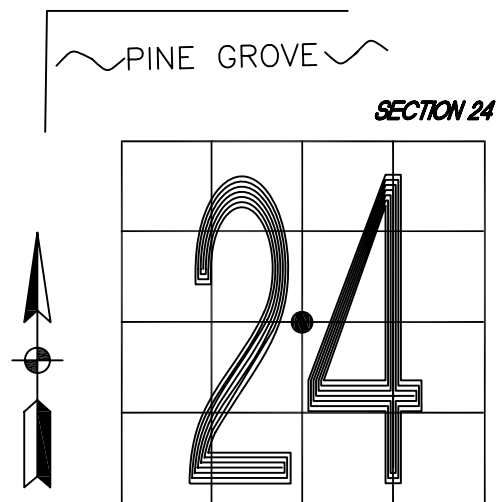
MONUMENT: 8" ROUND WOOD POST

CORNER OF: RECORD USE

PARTY: JL/PM

DATE: 7-3-2008

COMMENTS: POST IS 4' TALL. ALL MEASUREMENTS TO REFERENCES TAKEN AT CENTER OF POST AT GROUND LEVEL. MONUMENT USED BY WIGHTMAN-CRAMER FOR SURVEYS IN 1997 AND 1999.



CORNER LOCATION IN THE SECTION

P23