

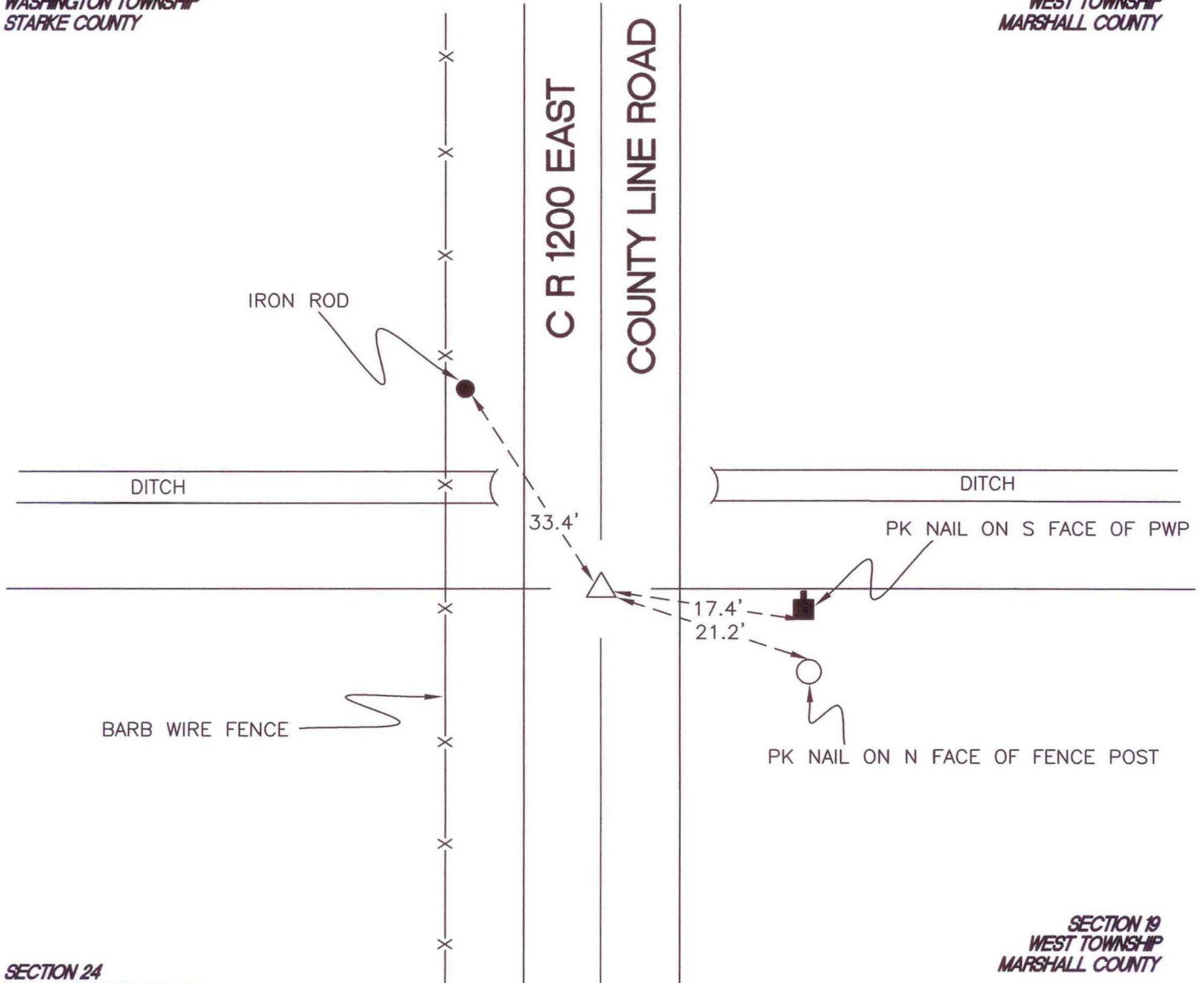
WASHINGTON TOWNSHIP

T 33 N, R 1 W

P25

SECTION 24
WASHINGTON TOWNSHIP
STARKE COUNTY

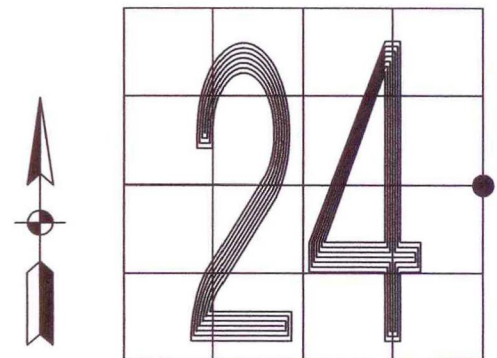
SECTION 19
WEST TOWNSHIP
MARSHALL COUNTY



SECTION 24
WASHINGTON TOWNSHIP
STARKE COUNTY

SECTION 19
WEST TOWNSHIP
MARSHALL COUNTY

MONUMENT: ALUMINUM MONUMENT
CORNER OF: RECORD USE
PARTY: JL/PM
DATE: 5-16-2008
COMMENTS: ESTABLISHED BY MARSHALL COUNTY IN 2000



CORNER LOCATION IN THE SECTION

P25