

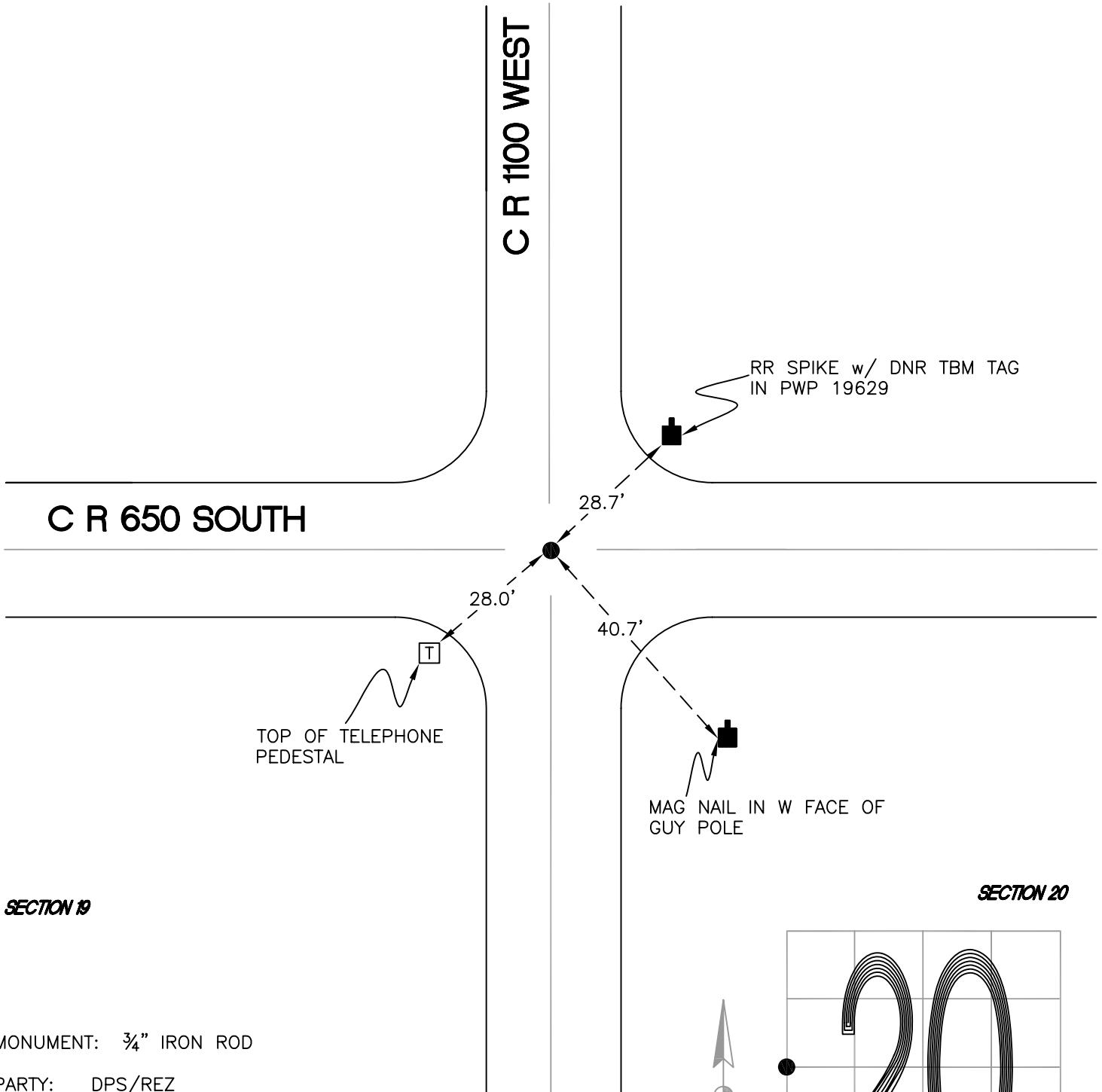
# RAILROAD TOWNSHIP

T 32 N, R 4 W

## P5

SECTION 19

SECTION 20

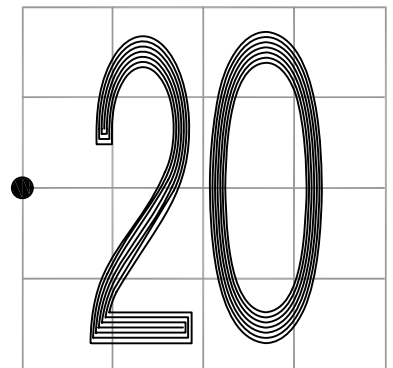


MONUMENT: 3/4" IRON ROD

PARTY: DPS/REZ

DATE: 2015

COMMENTS: FOUND BY VHJ IN 1985.



CORNER LOCATION IN THE SECTION

## P5