

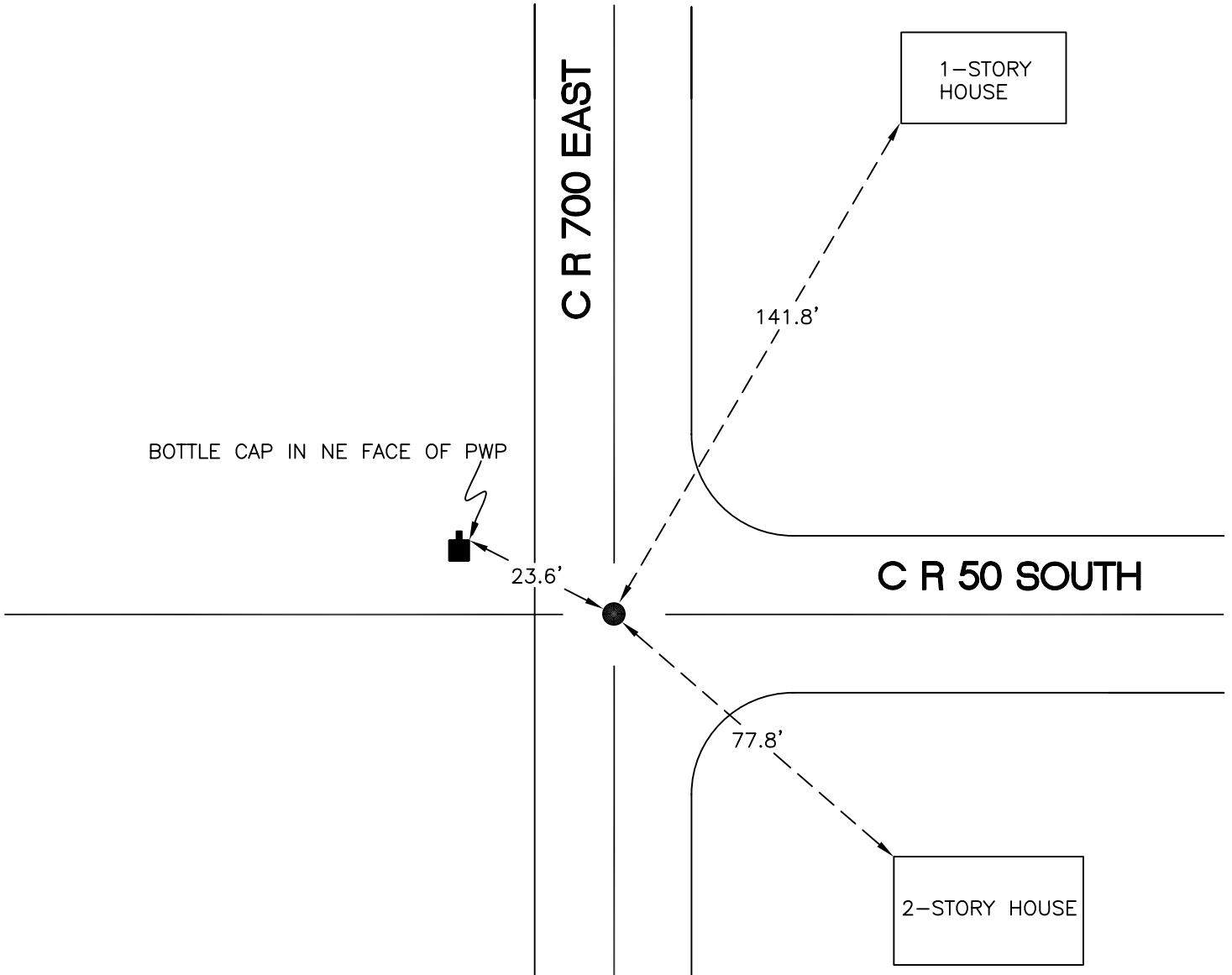
# WASHINGTON TOWNSHIP

T 33 N, R 1 W

## P5

SECTION 19

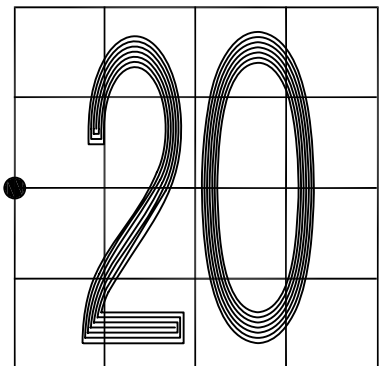
SECTION 20



SECTION 19

SECTION 20

MONUMENT: 1" IRON ROD W/ PUNCH MARK  
CORNER OF: RECORD  USE   
PARTY: JL/PM  
DATE: 5-16-2008  
COMMENTS: 0.1' BELOW GRADE



CORNER LOCATION IN THE SECTION

## P5