

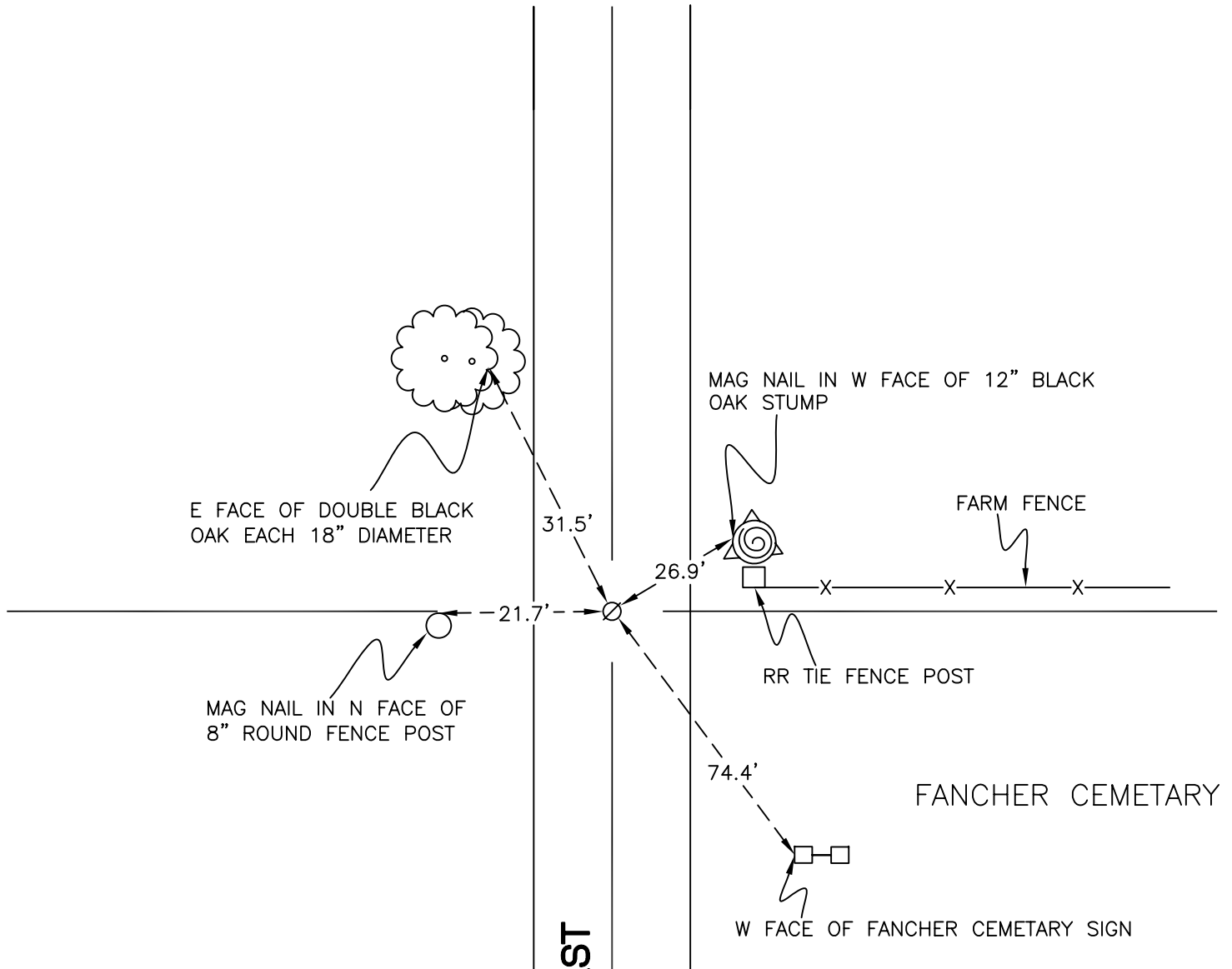
DAVIS TOWNSHIP

T 34 N, R 2 W

P7

SECTION 20

SECTION 20



SECTION 20

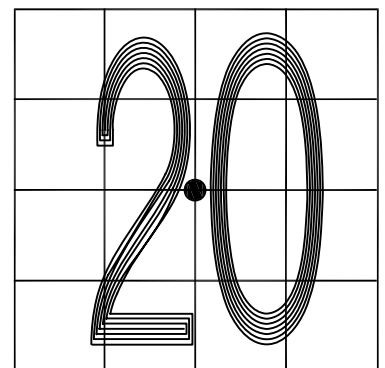
SECTION 20

MONUMENT: RAILROAD SPIKE

PARTY: DPS/JL

DATE: 3/17/16

COMMENTS: USED BY TERRITORIAL ENGINEERING IN A SURVEY, DOCUMENT # 201000670. FOUND BY MSL/JL IN 2009.



CORNER LOCATION IN THE SECTION

P7