

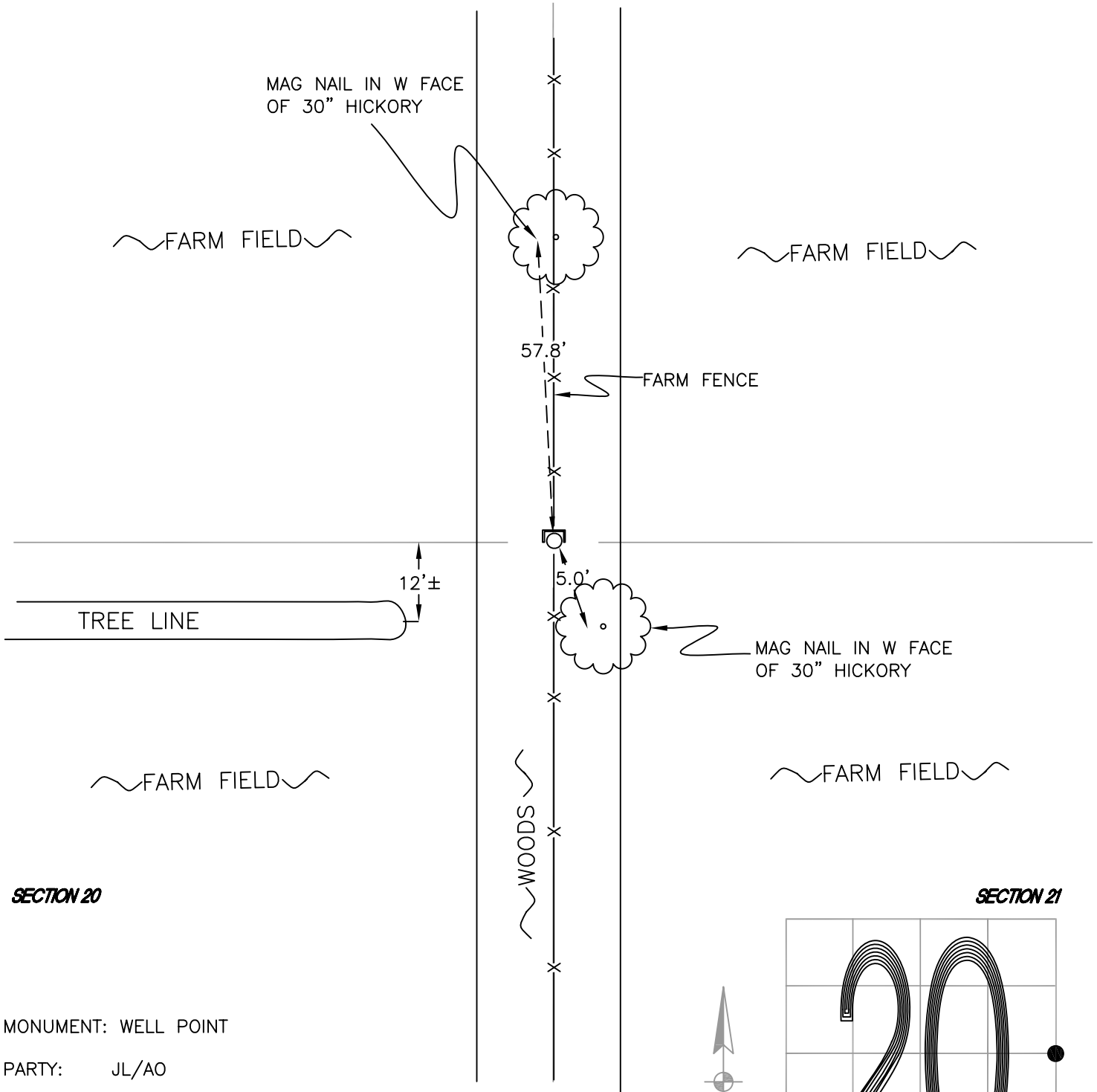
NORTH BEND TOWNSHIP

T 32 N, R 1 W

P9

SECTION 20

SECTION 21



SECTION 20

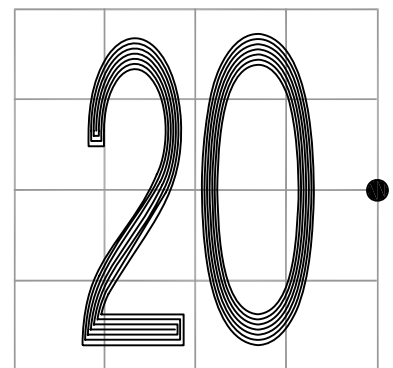
SECTION 21

MONUMENT: WELL POINT

PARTY: JL/AO

DATE: 6/21/12

COMMENTS: 30" ABOVE GRADE, LEANING S, IN POOR CONDITION.
STEEL CHANNEL DIRECTLY TO THE NORTH OF MONUMENT.
FOUND IN 1983 BY VHJ.



CORNER LOCATION IN THE SECTION

P9