

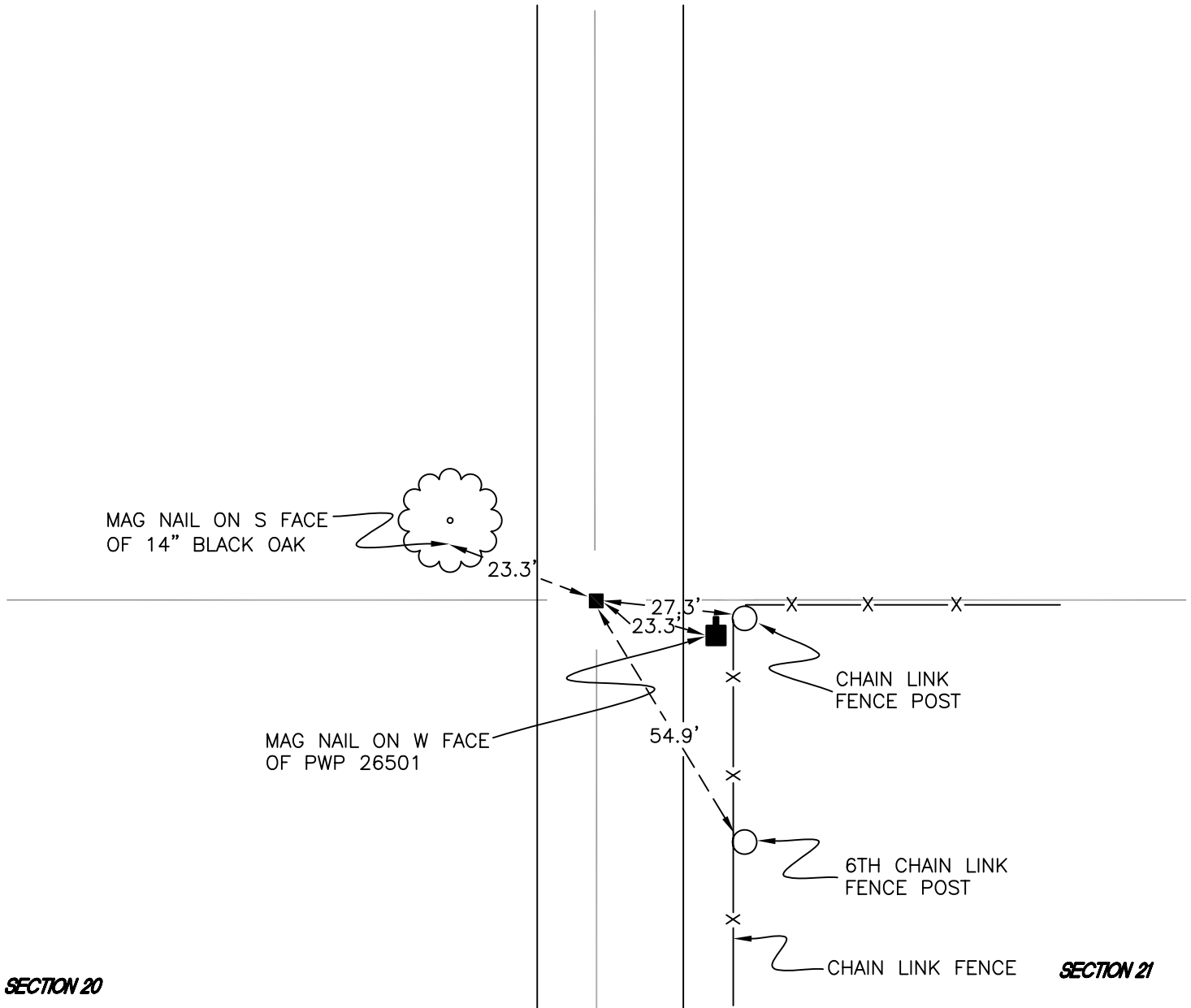
# CALIFORNIA TOWNSHIP

T 32 N, R 2 W

## P9

SECTION 20

SECTION 21



SECTION 20

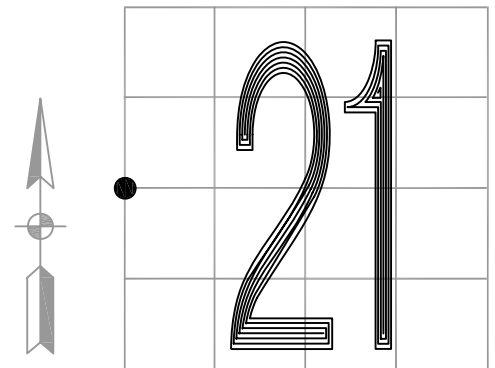
SECTION 21

MONUMENT: 1" SQUARE IRON

PARTY: DPS/JL

DATE: 7/15/14

COMMENTS: MONUMENT IS 5" BELOW GRADE AND 2' W OF  $\phi$  OF 200 E. FOUND BY VHJ IN 1982.



CORNER LOCATION IN THE SECTION

# P9