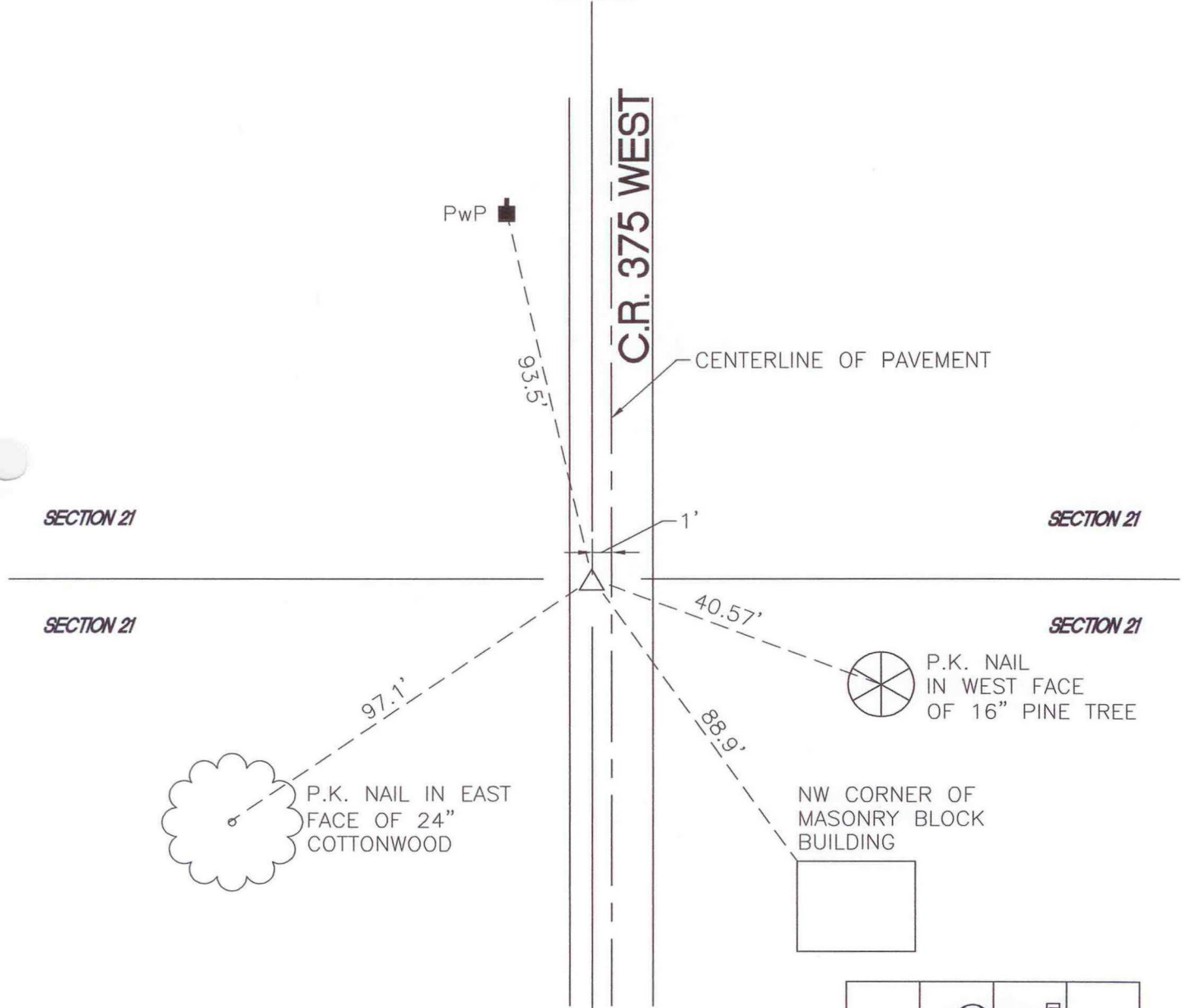


WAYNE TOWNSHIP

T 32 N, R 3 W

Q10



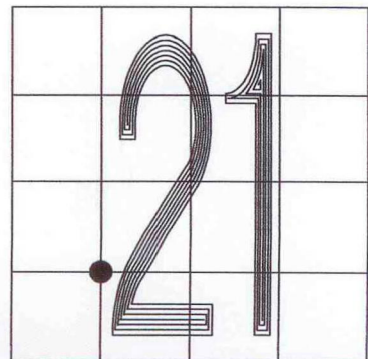
MONUMENT: (F) RAILROAD CROSSING BOLT

CORNER OF: RECORD USE

PARTY: DPS/DWC

DATE: 11/15/99

COMMENTS: 1' WEST OF CENTERLINE OF ROAD



CORNER LOCATION IN THE SECTION