

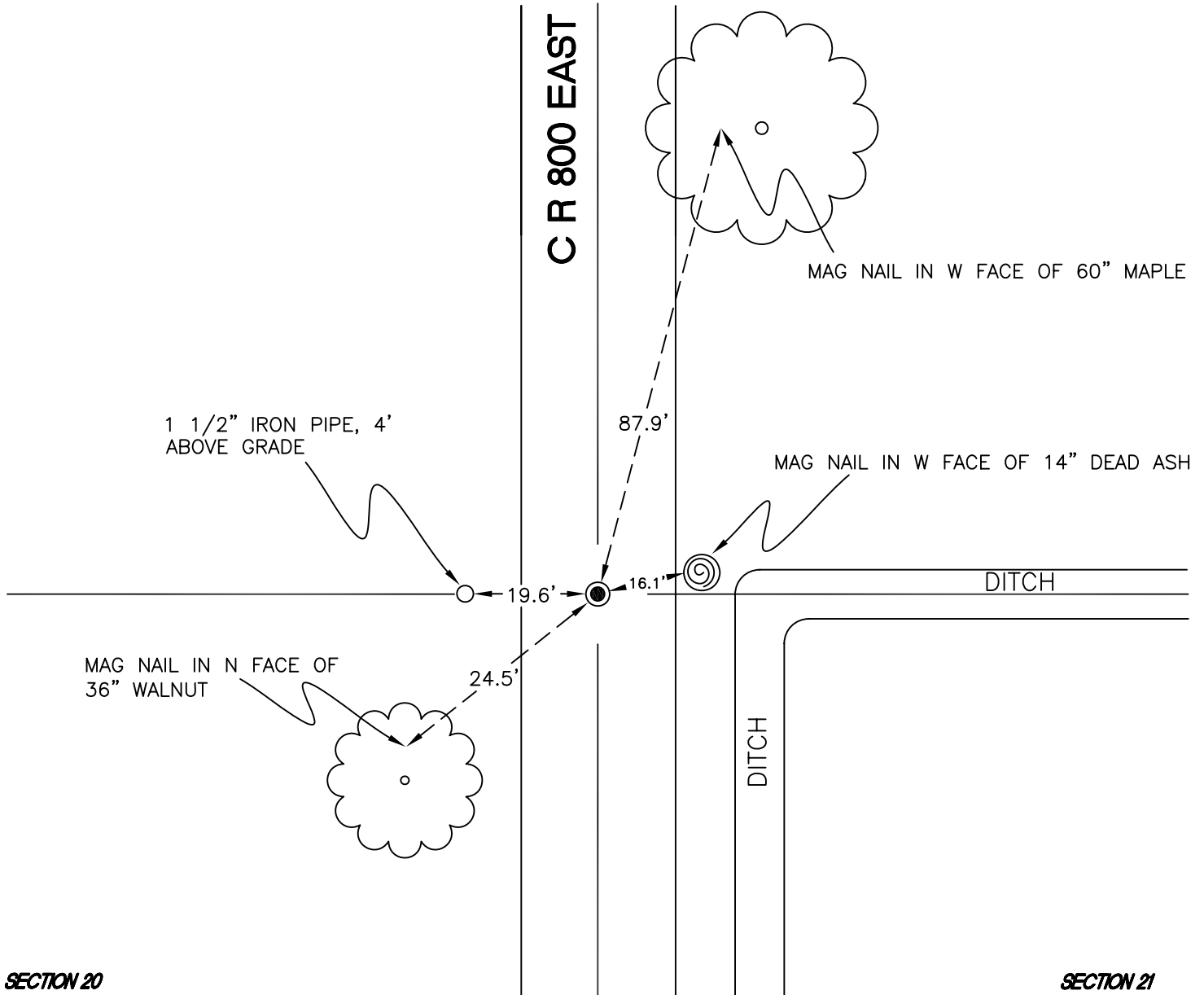
WASHINGTON TOWNSHIP

T 33 N, R 1 W

Q9

SECTION 20

SECTION 21



SECTION 20

SECTION 21

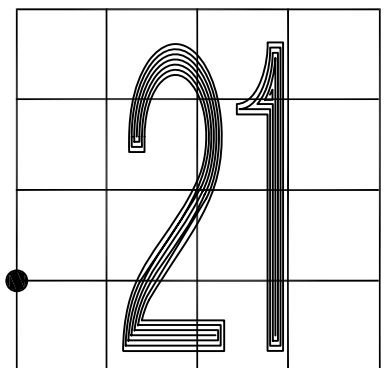
MONUMENT: 5/8" IRON ROD IN 1" WELLPOINT

CORNER OF: RECORD USE

PARTY: JL/PM

DATE: 5-16-2008

COMMENTS: 6" E OF \varnothing OF 800E; 6" BELOW GRADE.
A MAG NAIL AND RR SPIKE ARE LOCATED ABOUT
2' W OF THE MONUMENT; DO NOT USE EITHER OF
THESE AS THE CORNER.



CORNER LOCATION IN THE SECTION

Q9