

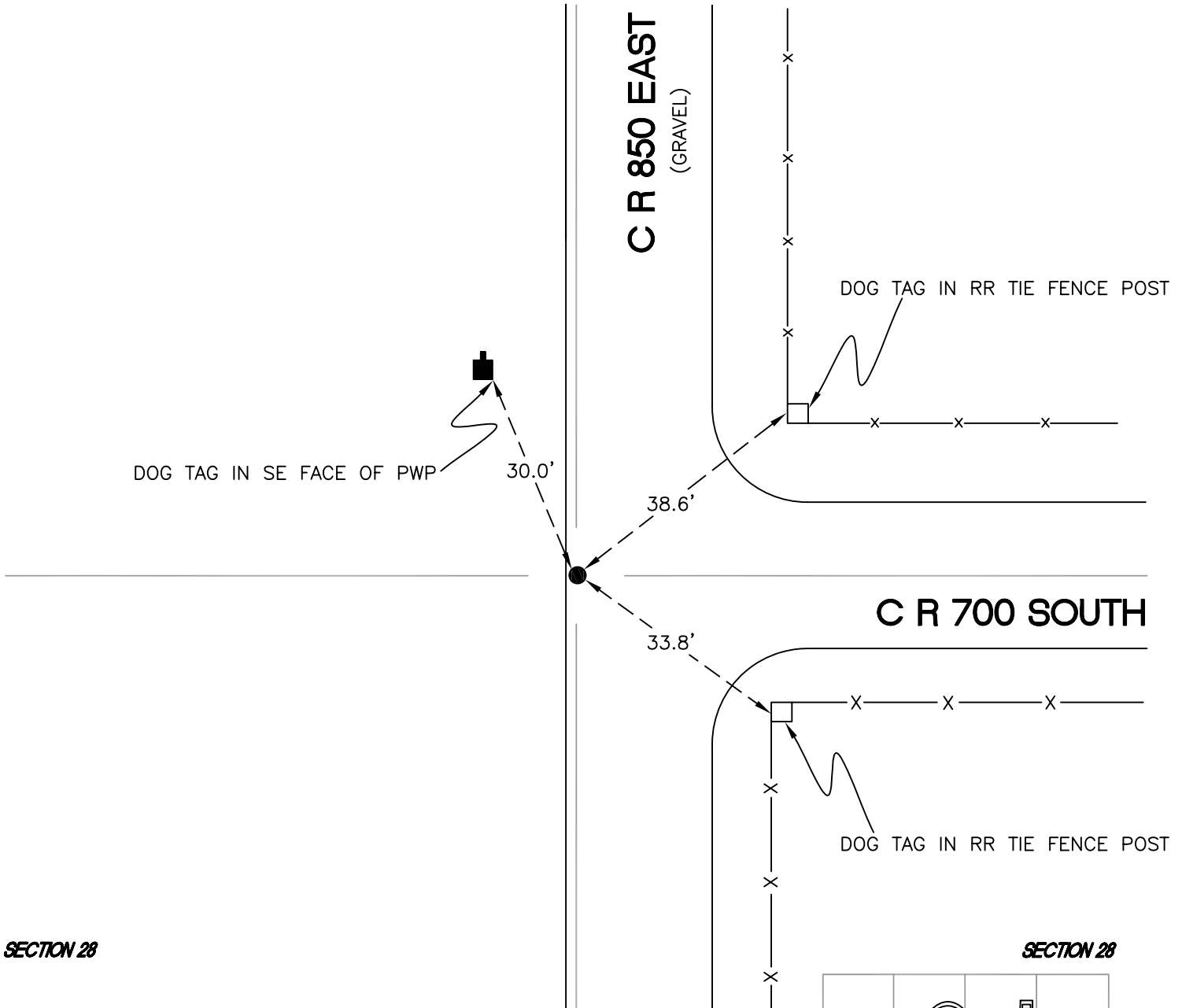
# NORTH BEND TOWNSHIP

T 732 N, R 1 W

## R11

SECTION 21

SECTION 21



SECTION 28

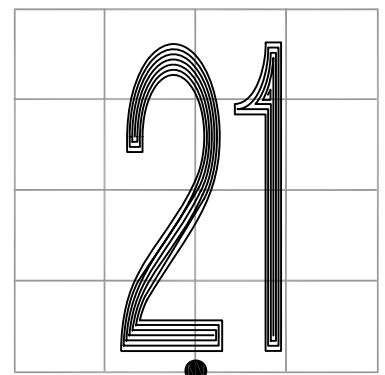
SECTION 28

MONUMENT: 5/8" IRON ROD

PARTY: JL/AO

DATE: 6/6/12

COMMENTS: FOUND IN 1990 BY DWC / BEW AND IN 2009 BY DPS / JL.



CORNER LOCATION IN THE SECTION

## R11