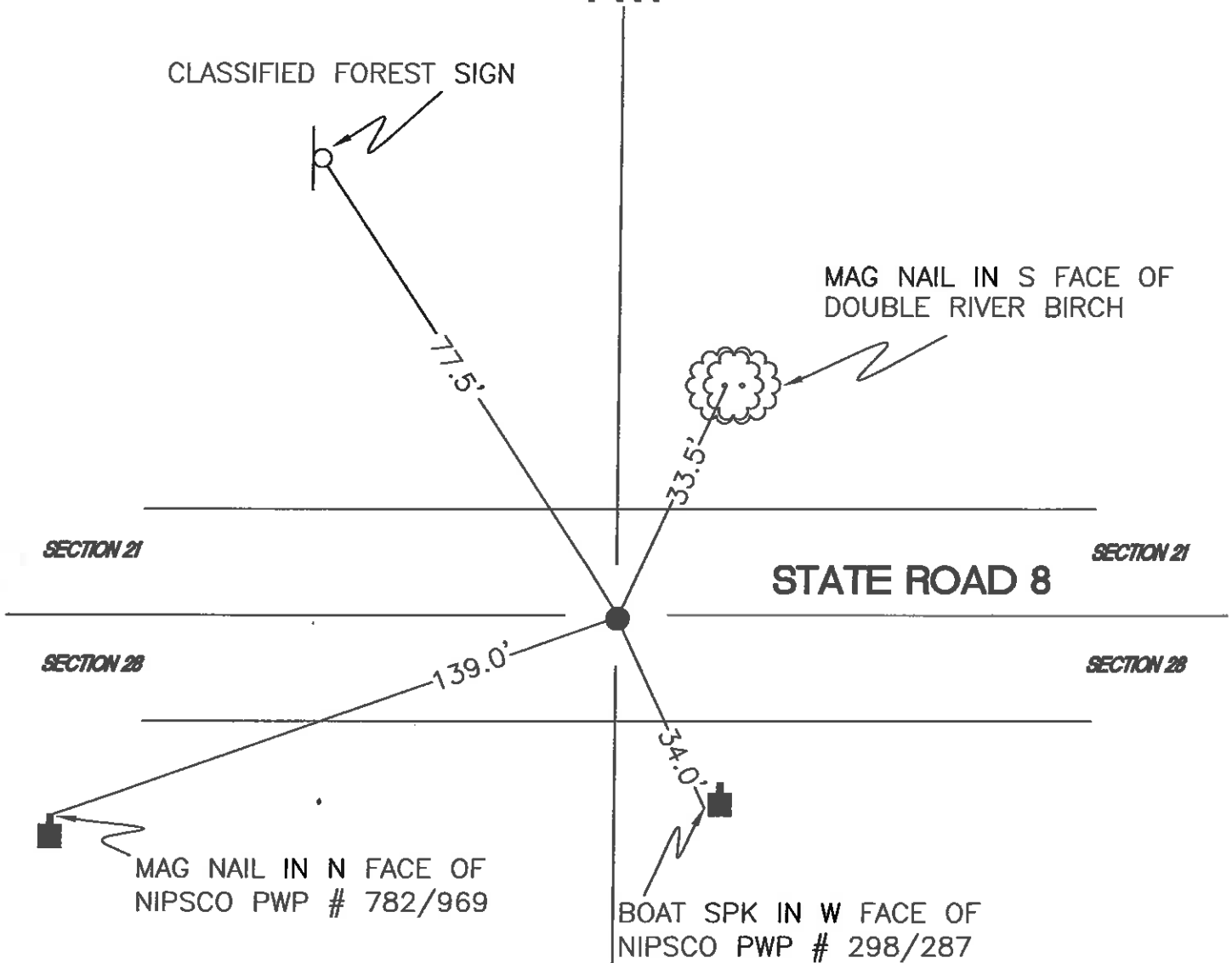


WASHINGTON TOWNSHIP

T 33 N, R 1 W

R11



YELLOW RIVER FARM

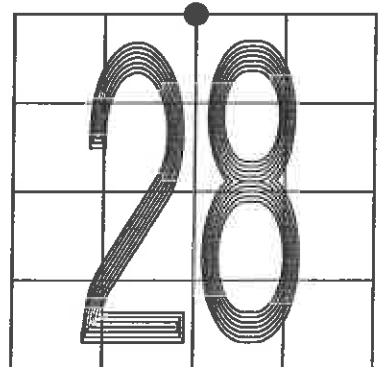
MONUMENT: 3/4" IRON REINFORCING ROD

CORNER OF: RECORD USE

PARTY: DPS/JL

DATE: 12-07-2006

COMMENTS: RR SPIKE REPLACED WITH RE-ROD © RESURFACING



R11

CORNER LOCATION IN THE SECTION