

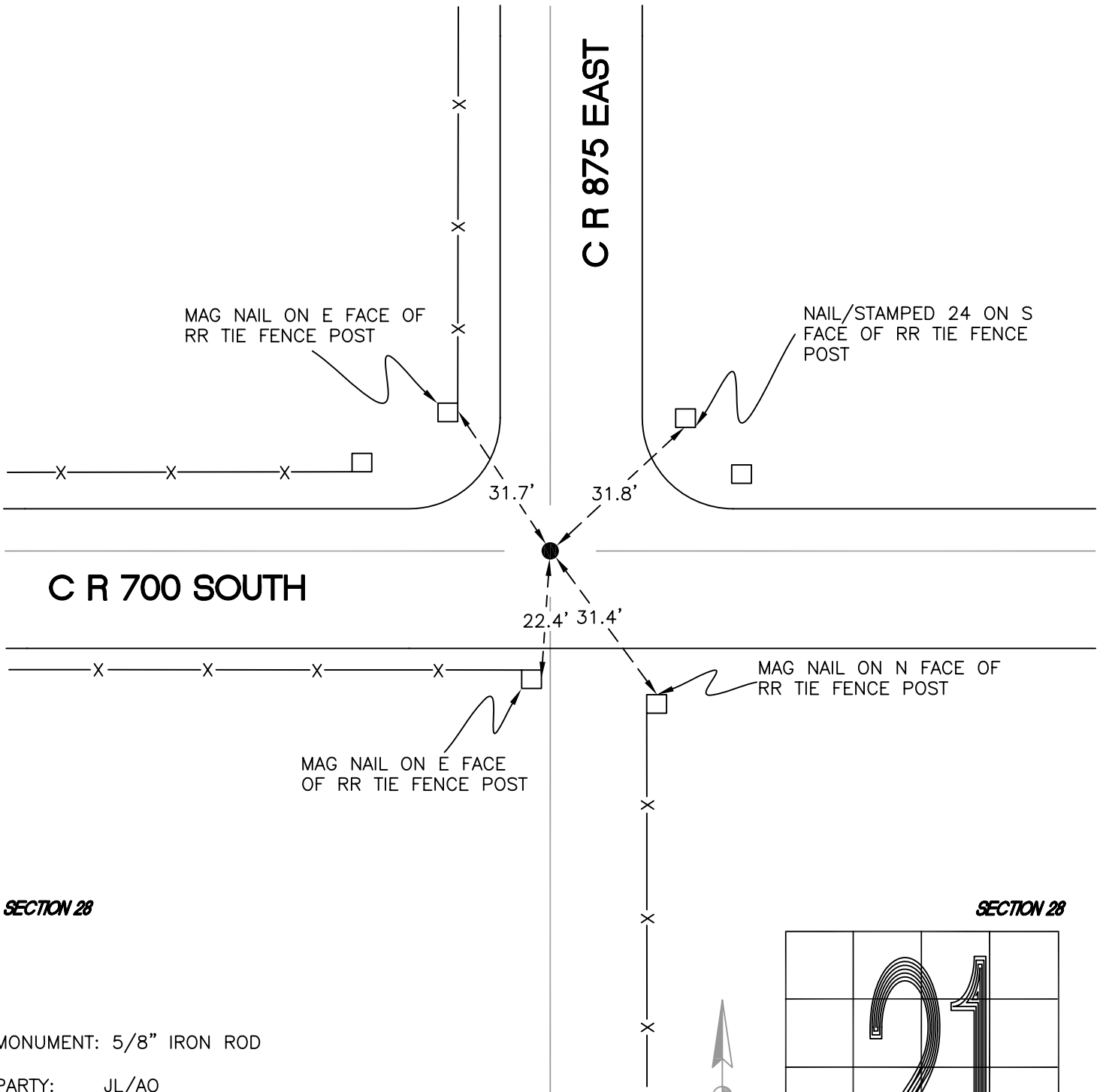
NORTH BEND TOWNSHIP

T 32 N, R 1 W

R12

SECTION 21

SECTION 21



SECTION 28

SECTION 28

MONUMENT: 5/8" IRON ROD

PARTY: JL/AO

DATE: 6-6-2012

COMMENTS: 6" BELOW GRADE. ESTABLISHED AND SET BY GRAND KANKAKEE SURVEY IN 2004. IRON ROD GRADED OUT, RESET BY TERRITORIAL ENGINEERING IN SURVEY # 09-224 IN 2009.

CORNER LOCATION IN THE SECTION

R12