

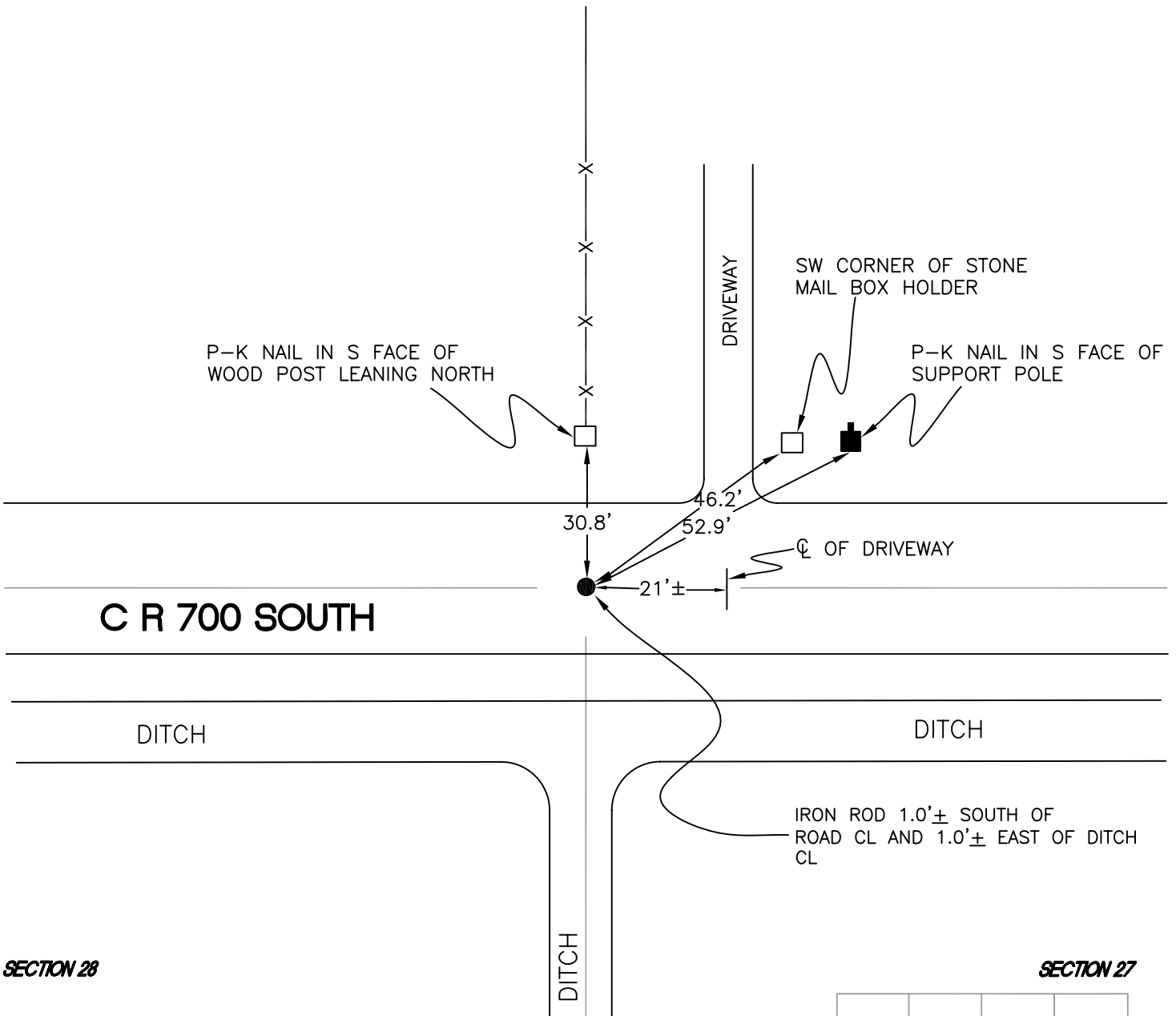
NORTH BEND TOWNSHIP

T 32 N, R 1 W

R13

SECTION 21

SECTION 22



SECTION 28

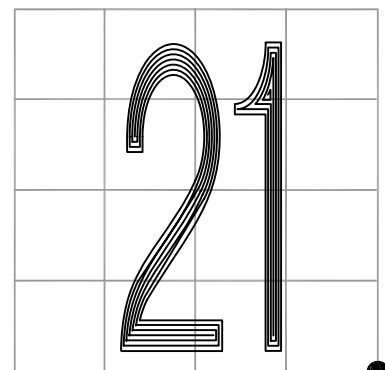
SECTION 27

MONUMENT: 5/8" IRON ROD

PARTY: JL/AO

DATE: 6-6-2012

COMMENTS: 4" BELOW GRADE. MONUMENT FOUND IN 1990 WAS GRADED OUT, RESET BY TERRITORIAL ENGINEERING IN 2009 BASED ON EXISTING REFERENCES AND GRAND KANKAKEE SURVEY JOB # G04-111.



CORNER LOCATION IN THE SECTION

R13