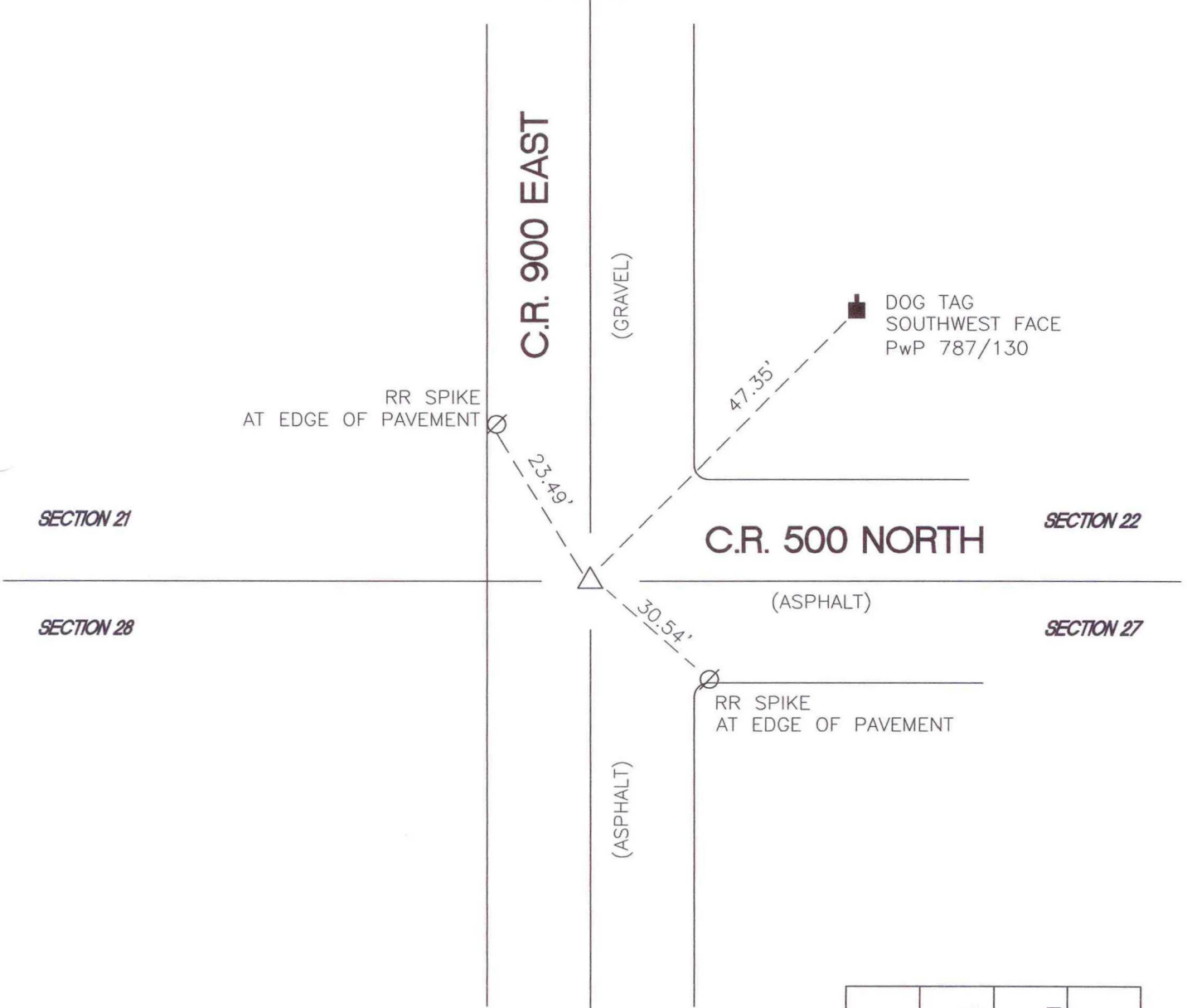


OREGON TOWNSHIP

T 34 N, R 1 W

R13



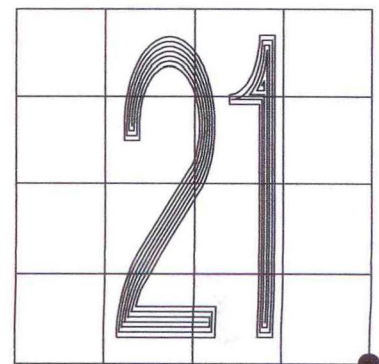
MONUMENT: SEE COMMENTS

CORNER OF: RECORD USE

PARTY: VHJ/COD

DATE: 3-22-05

COMMENTS:
 (F) 60d NAIL AT GRADE IN 2" CIP 1/2" BELOW GRADE
 HISTORY: RLP, FORMER STARKE COUNTY
 SURVEYOR SET 2" CAST IRON PIPE ON
 JULY 12, 1984.



CORNER LOCATION IN THE SECTION