

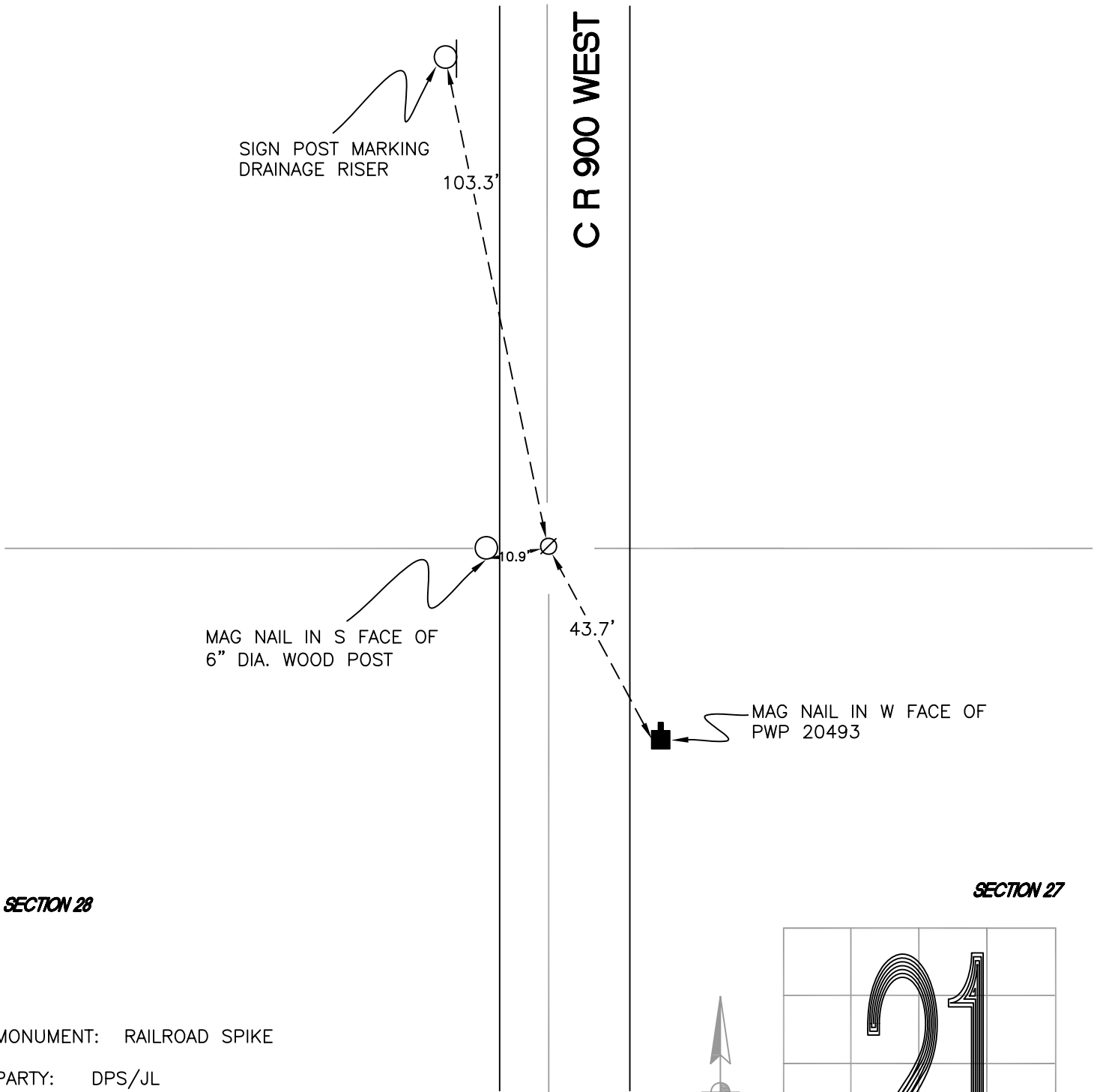
# RAILROAD TOWNSHIP

T 32 N, R 4 W

## R13

SECTION 21

SECTION 22



SECTION 28

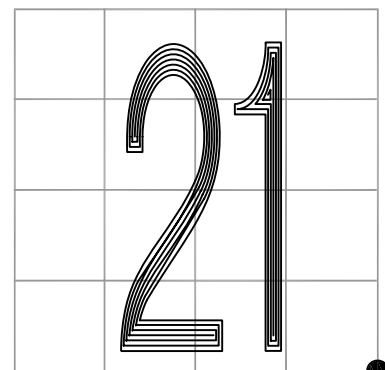
SECTION 27

MONUMENT: RAILROAD SPIKE

PARTY: DPS/JL

DATE: 5/7/2015

COMMENTS: MONUMENT IS 3" BELOW GRADE AND 2½' W OF  $\text{C}$  OF 900 W. USED BY PROGRESSIVE ENGINEERING IN A SURVEY, DOCUMENT # 2007002862.



CORNER LOCATION IN THE SECTION

# R13