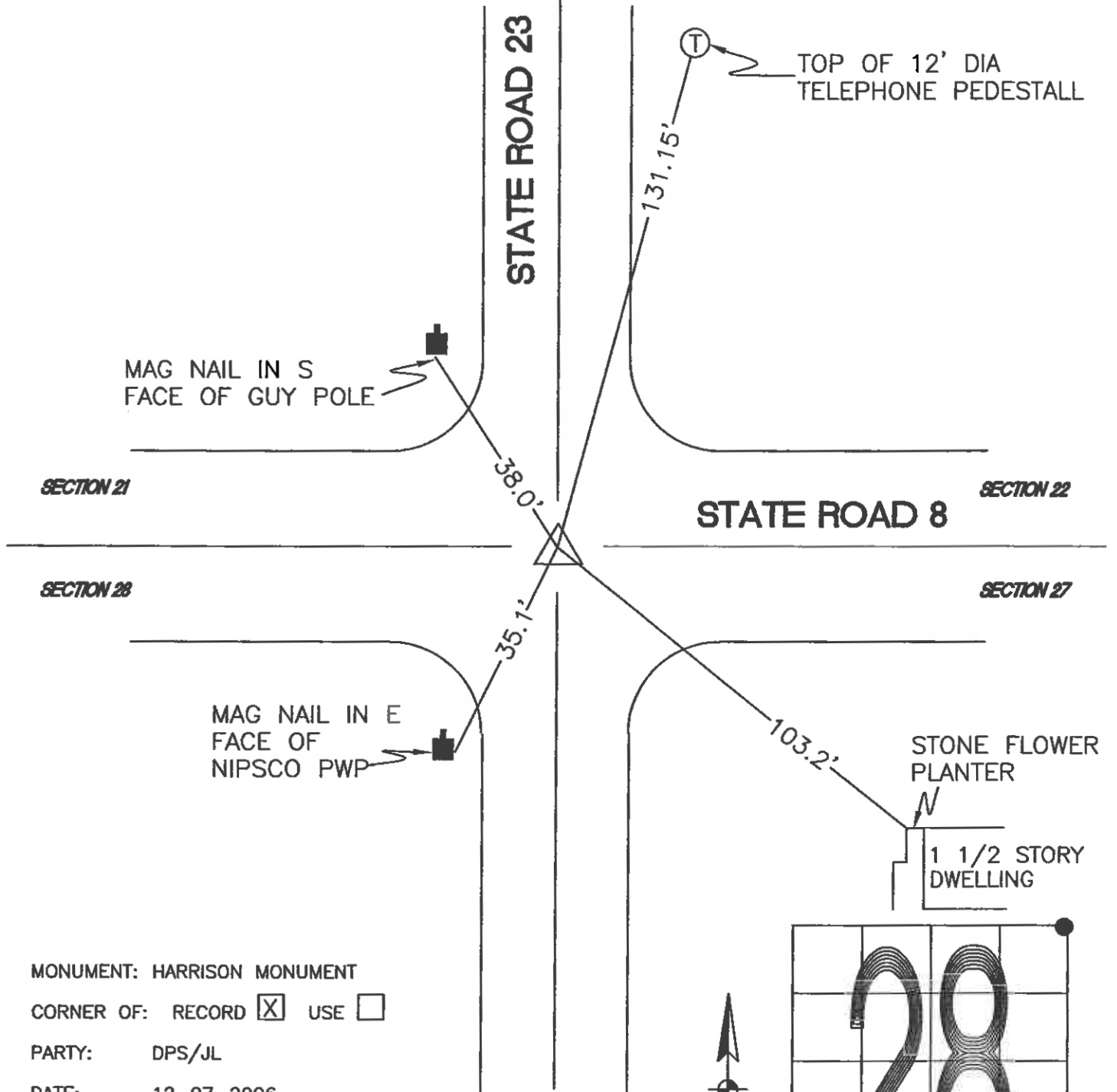


# WASHINGTON TOWNSHIP

T 33 N, R 1 W

## R13



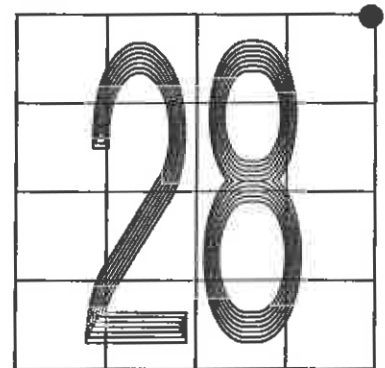
MONUMENT: HARRISON MONUMENT

CORNER OF: RECORD  USE

PARTY: DPS/JL

DATE: 12-07-2006

COMMENTS: RAIL BOLT REPLACED WITH HARRISON © RESURFACING



CORNER LOCATION IN THE SECTION