

SECTION CORNER REFERENCE

SECTION 22 TOWNSHIP 34-N RANGE 2-W
 (Description of Corner Location) SOUTH QUARTER CORNER

R15

R15

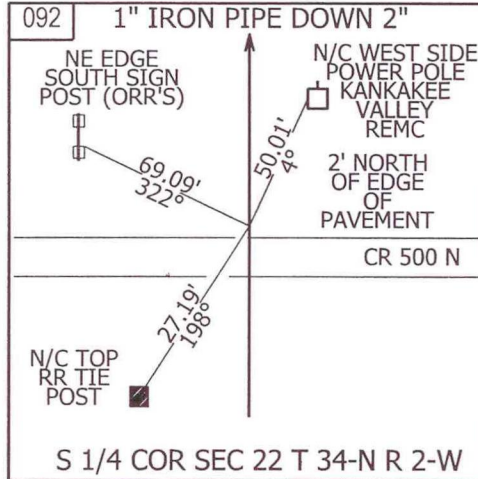
DAVIS TWP.,
STARKE COUNTY, INDIANA



COORDINATES

NAD '83 IN E. ZONE
 NAD '83 IN W. ZONE
 LOCAL GRID
 Units: US FEET
 Pt.#: 092
 N: 6,640.218
 E: 7,349.338

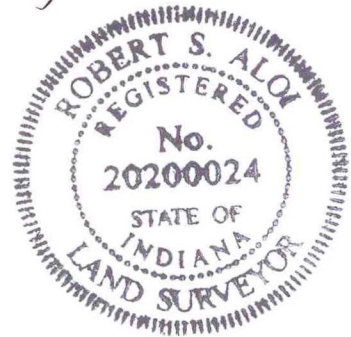
TYPE OF MON.: 1" IRON PIPE
 DEPTH: 2"
 UNCERTAINTY: _____
 BY: COUNTY SURVEYOR
 DATE: JULY 2009
 DES.NO.: 0500068



STATE FORM 40180 (R2/2-04)

REFERENCED BY: INDOT

COMMENTS: MONUMENT AND REFERENCES
SAME AS IN 1985



R15