

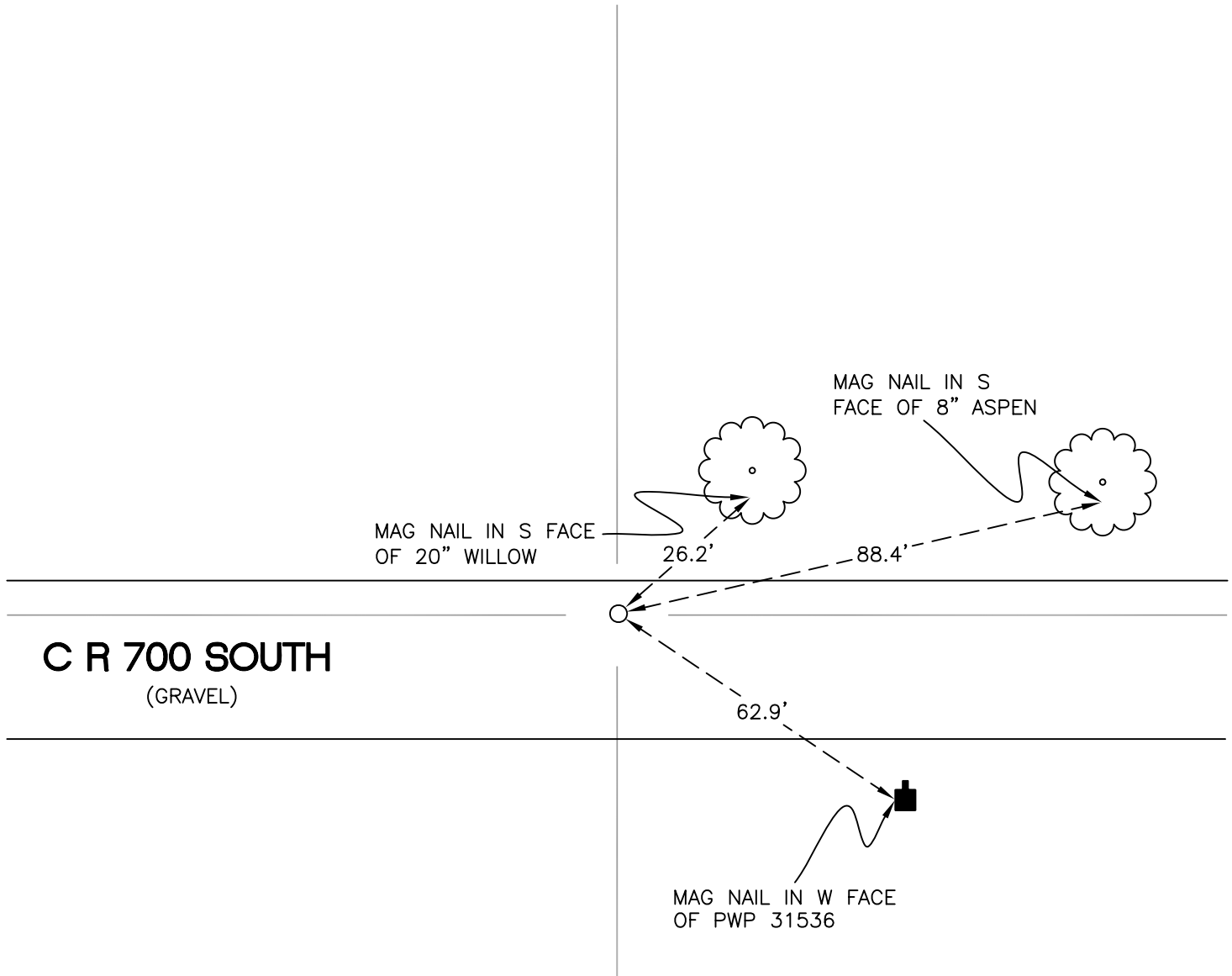
# NORTH BEND TOWNSHIP

T 32 N, R 1 W

## R15

SECTION 22

SECTION 22



SECTION 27

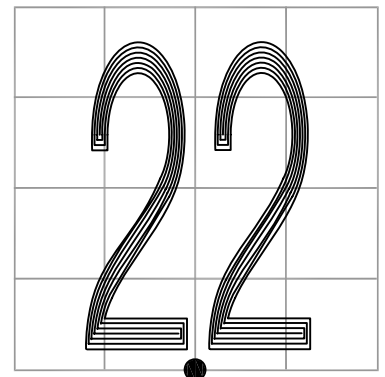
SECTION 27

MONUMENT: 1" IRON PIPE

PARTY: JL/AO

DATE: 6/18/12

COMMENTS: 2" BELOW GRADE; 4' N OF  $\text{\textcircled{C}}$  OF 700 S.  
SET BY WIGHTMAN-CRAMER IN 1995.



CORNER LOCATION IN THE SECTION

## R15