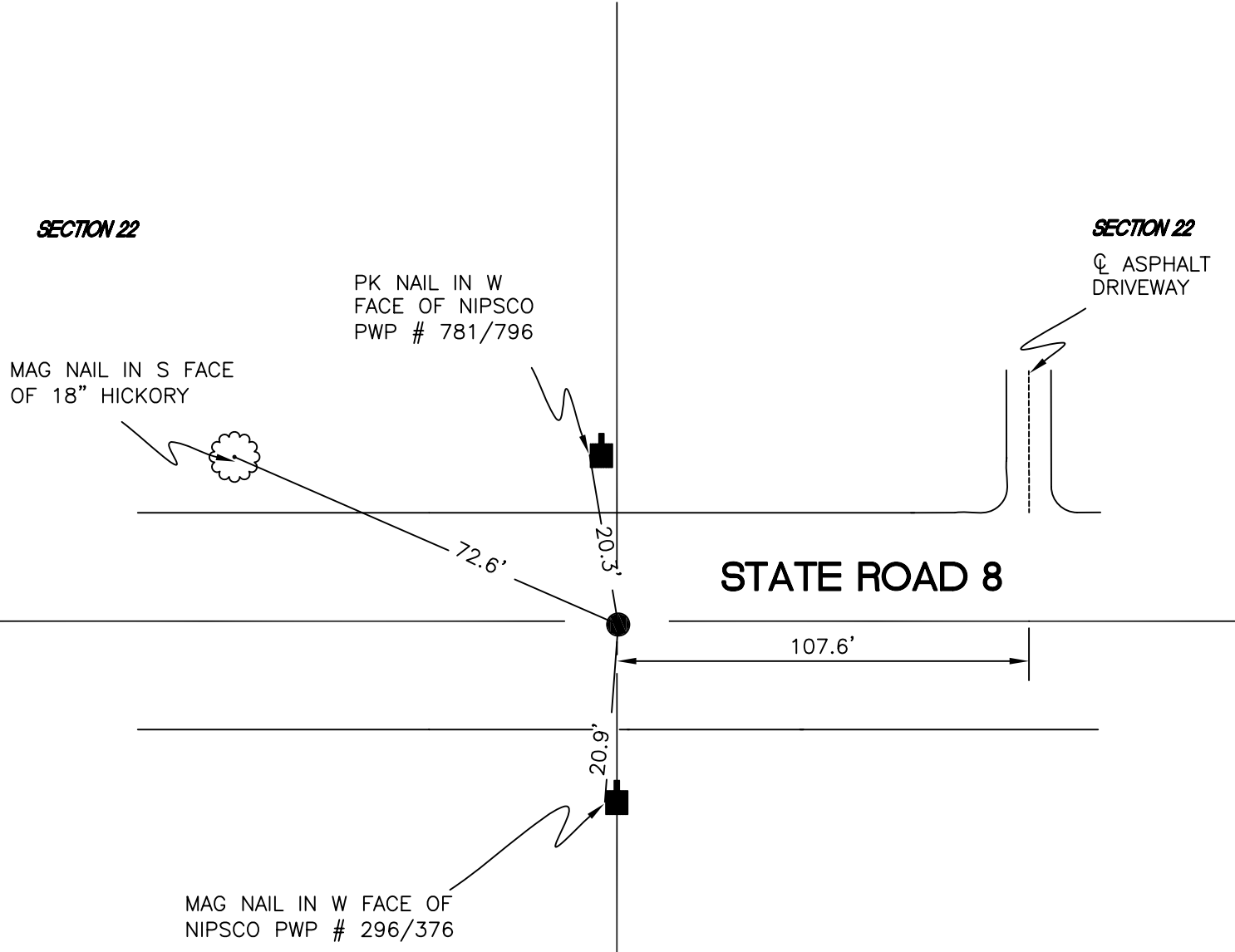


WASHINGTON TOWNSHIP

T 33 N, R 1 W

R15



SECTION 22

SECTION 22

PK NAIL IN W
FACE OF NIPSCO
PWP # 781/796

☪ ASPHALT
DRIVEWAY

MAG NAIL IN S FACE
OF 18" HICKORY

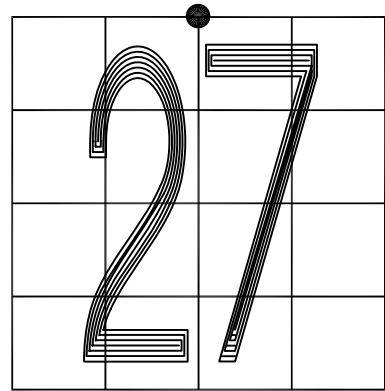
STATE ROAD 8

MAG NAIL IN W FACE OF
NIPSCO PWP # 296/376

SECTION 27

SECTION 27

MONUMENT: 3/4" IRON REINFORCING ROD
 CORNER OF: RECORD USE
 PARTY: DPS/JL
 DATE: 12-07-2006
 COMMENTS: RR SPIKE REPLACED WITH RE-ROD @ RESURFACING



R15

CORNER LOCATION IN THE SECTION