

SECTION CORNER REFERENCE

R17

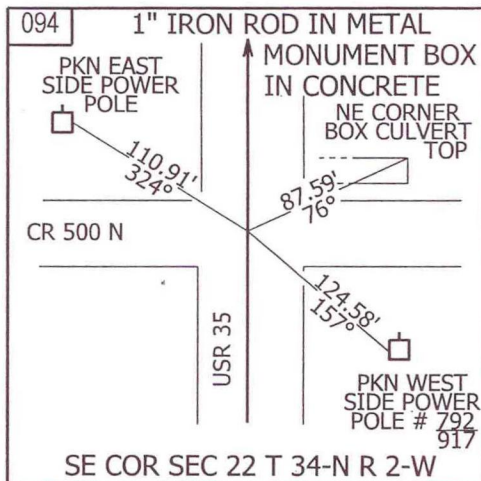
SECTION 22 TOWNSHIP 34-N RANGE 2-W
 (Description of Corner Location) SOUTHEAST CORNER
DAVIS TWP.,
STARKE COUNTY, INDIANA

R17



COORDINATES
 NAD '83 IN E. ZONE
 NAD '83 IN W. ZONE
 LOCAL GRID
 Units: US FEET
 Pt. #: 094
 N: 6,634.543
 E: 9,999.214

TYPE OF MON.: 1" IRON ROD IN MON. IN CONC.
 DEPTH: FLUSH
 UNCERTAINTY:
 BY: COUNTY SURVEYOR
 DATE: JULY 2009
 DES.NO.: 0500068



STATE FORM 40180 (R2/2-04)

REFERENCED BY: INDOT

COMMENTS: MONUMENT AND REFERENCES DIFFERENT THAN IN 1989 AND 1992

CURRENT MONUMENT ENCLOSED IN MONUMENT BOX DOES NOT MATCH IRON PIPE MONUMENT RECORD FROM 1989 AND 1992

MONUMENT LOCATION NEEDS TO BE VERIFIED BY SURVEY.



R17