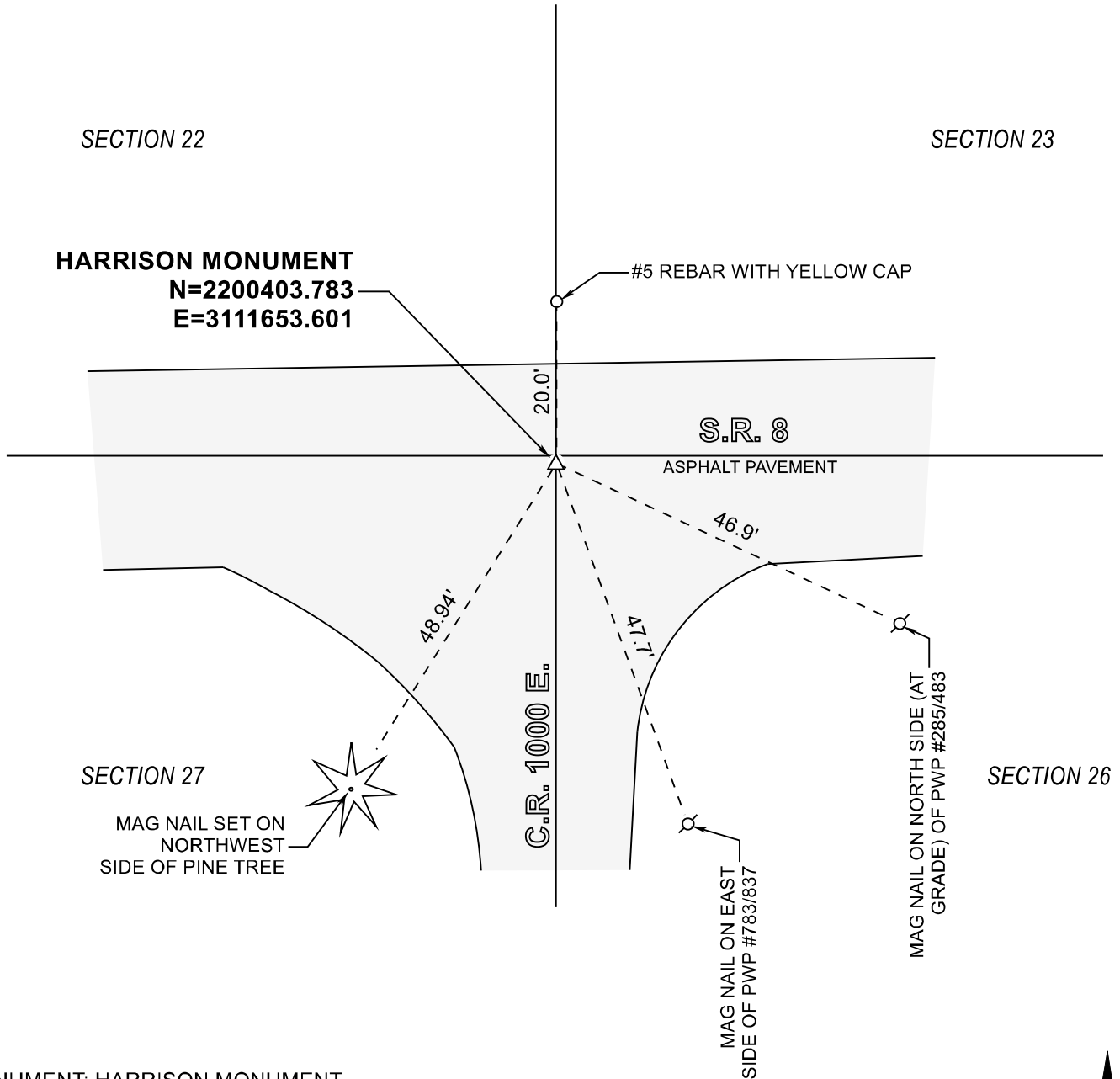


STARKE COUNTY SECTION CORNER RECORD

WASHINGTON TOWNSHIP

T 33 N, R 1 W

R17

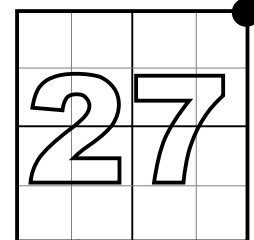


MONUMENT: HARRISON MONUMENT

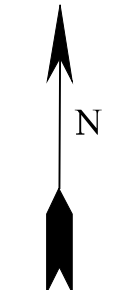
PARTY: SES DATE: 06/17/2020

COMMENTS: RECOVERED 12/07/06 BY DPS/JL. 5/8" IR REPLACED WITH HARRISON AT RESURFACING

COORDINATE DATUM: INDIANA STATE PLANE WEST NAD83(2011).
Coordinates shown on this sheet are for informational purposes only, and are not to be used in lieu of measurements by a professional surveyor.



CORNER LOCATION
IN SECTION



NOT TO
SCALE