

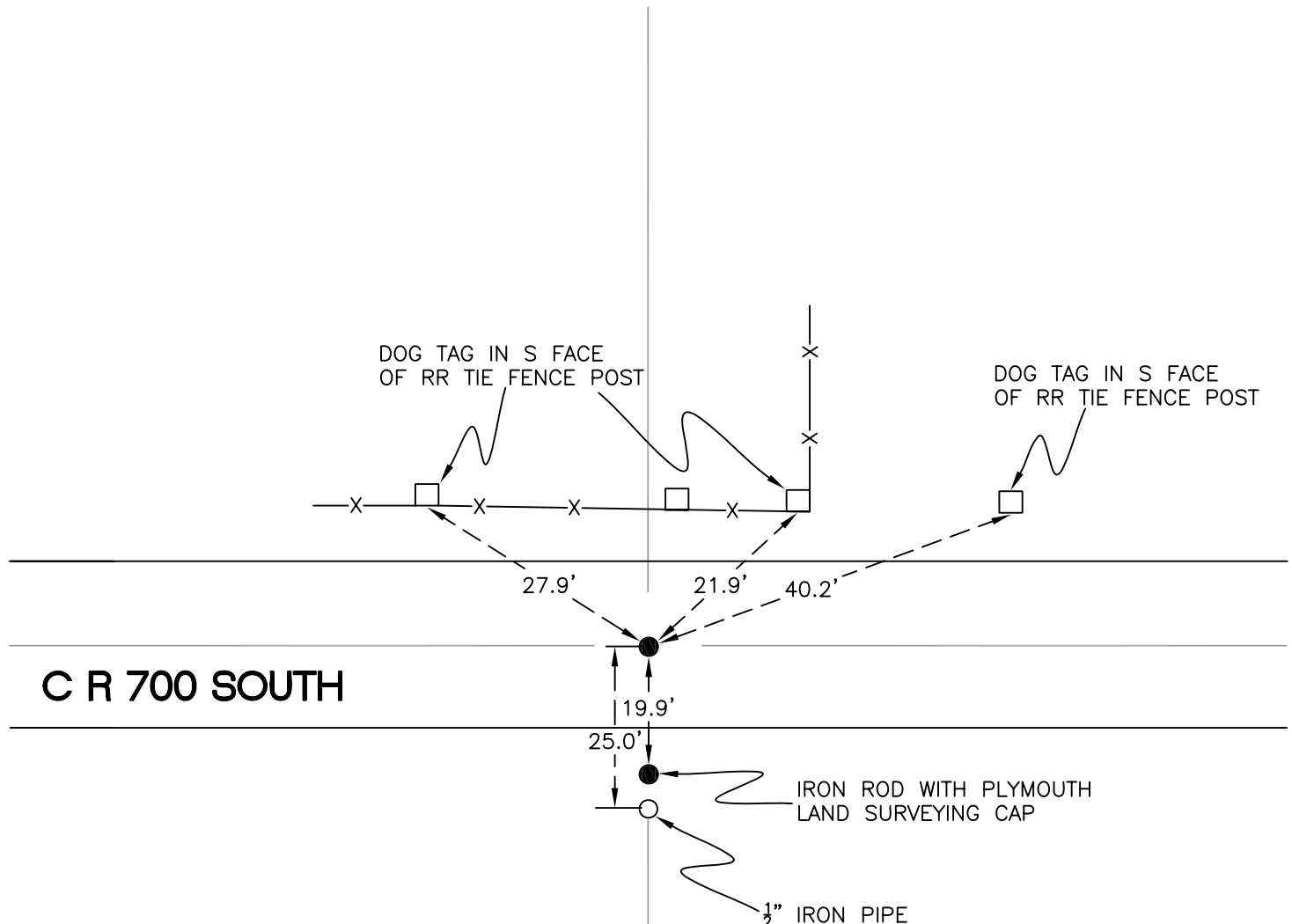
NORTH BEND TOWNSHIP

T 32 N, R 1 W

R17

SECTION 22

SECTION 23



SECTION 27

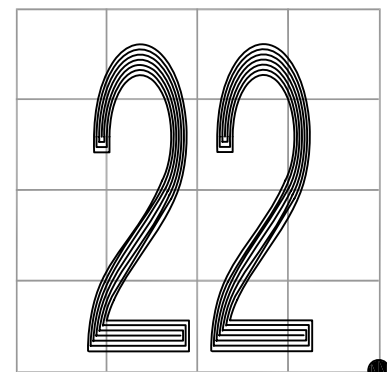
SECTION 26

MONUMENT: 3/4" IRON ROD (bent)

PARTY: JL/AO

DATE: 6/6/12

COMMENTS: ALL MEASUREMENTS TO REFERENCES TAKEN WHERE IRON ROD STRAIGHTENS OUT.
SET BY SJF IN 1986 TO REPLACE RR SPIKE.



CORNER LOCATION IN THE SECTION

R17