

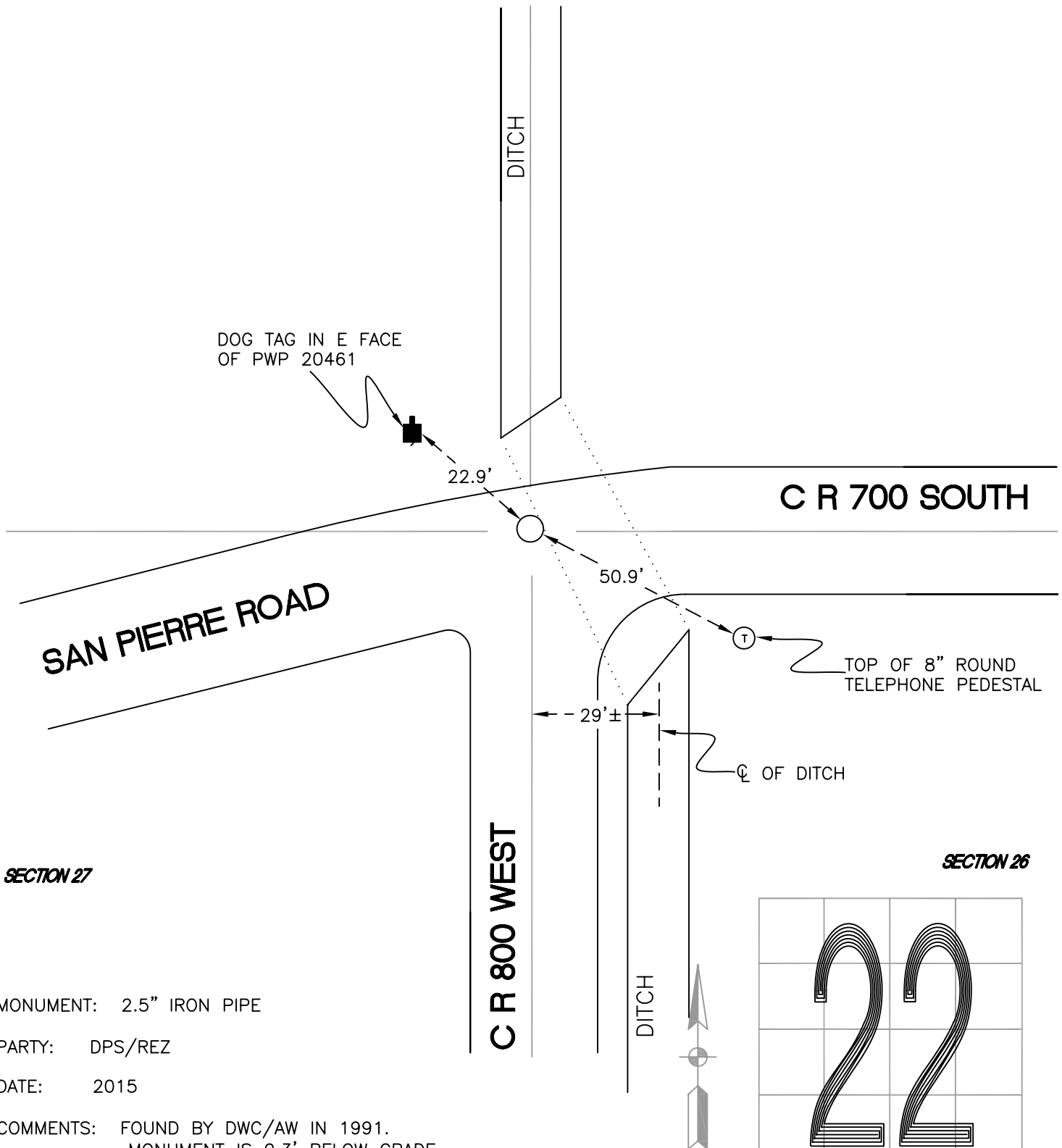
RAILROAD TOWNSHIP

T 32 N, R 4 W

R17

SECTION 22

SECTION 23



SECTION 27

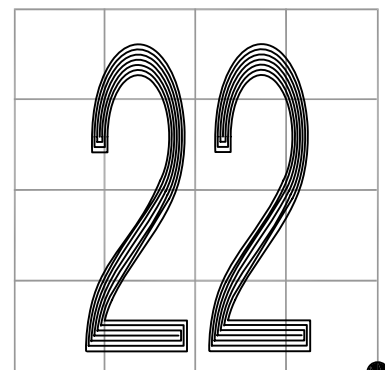
SECTION 26

MONUMENT: 2.5" IRON PIPE

PARTY: DPS/REZ

DATE: 2015

COMMENTS: FOUND BY DWC/AW IN 1991.
MONUMENT IS 0.3' BELOW GRADE.



CORNER LOCATION IN THE SECTION

R17