

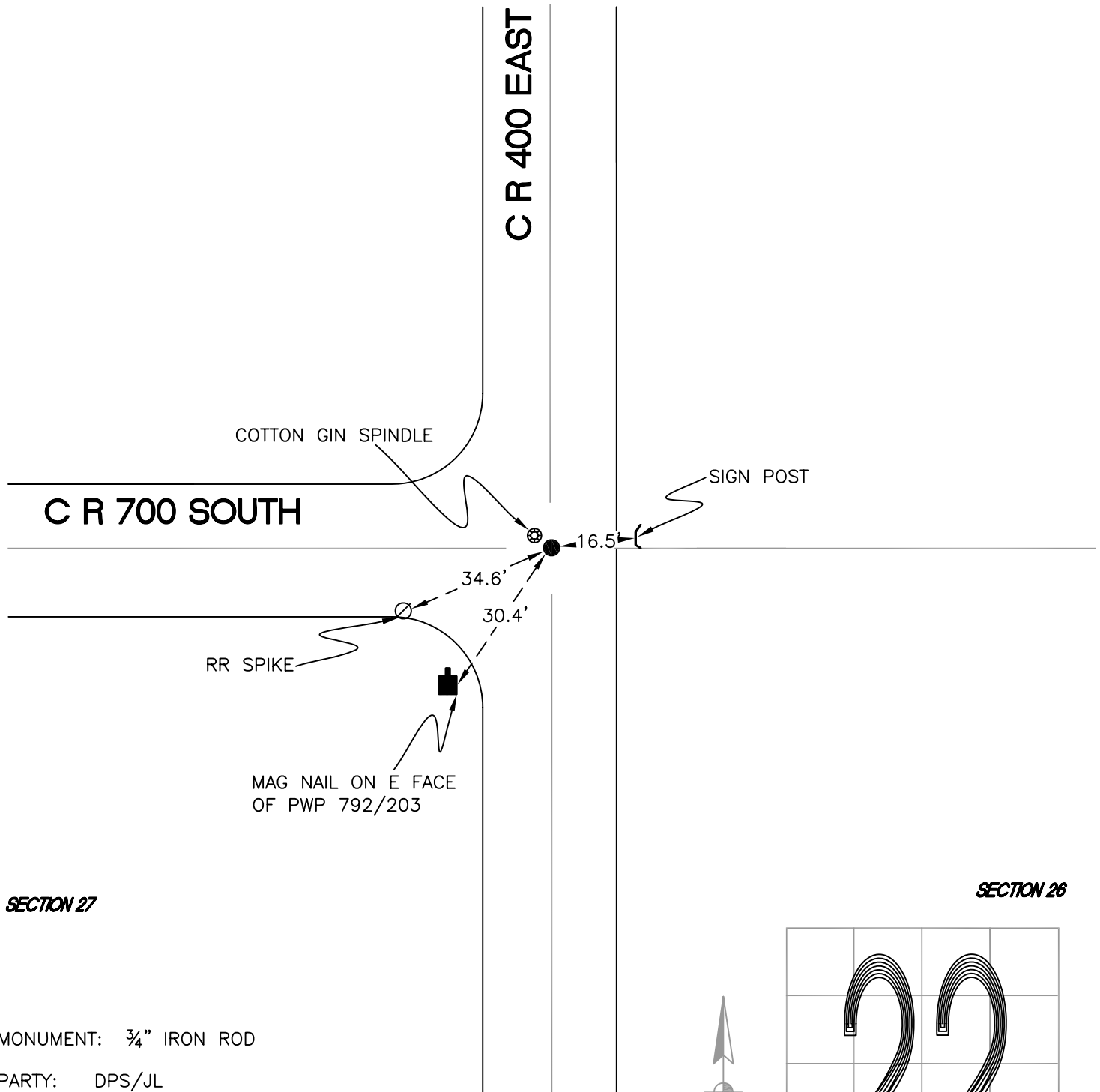
CALIFORNIA TOWNSHIP

T 32 N, R 2 W

R17

SECTION 22

SECTION 23



SECTION 27

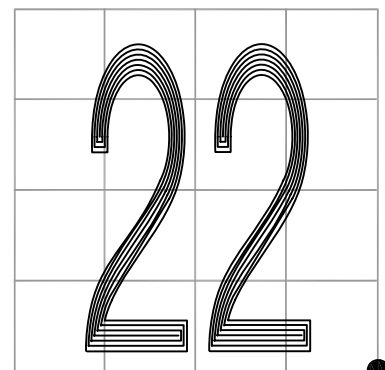
SECTION 26

MONUMENT: 3/4" IRON ROD

PARTY: DPS/JL

DATE: 7/14/14

COMMENTS: MONUMENT SET BY DLA IN 1990.
COTTON GIN SPINDLE IMMEDIATELY NW OF THE MONUMENT.



CORNER LOCATION IN THE SECTION

R17