

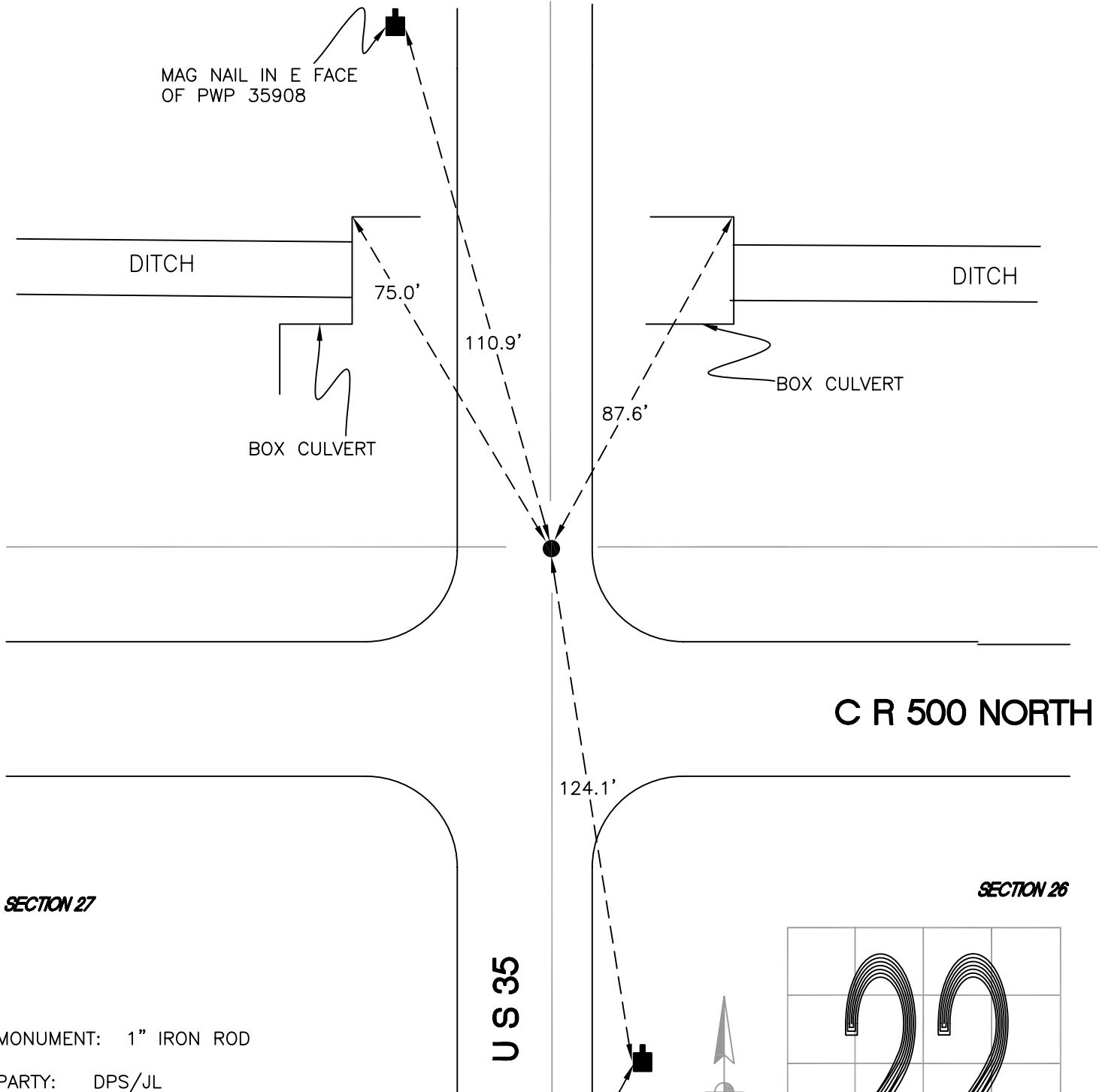
# DAVIS TOWNSHIP

T 34 N, R 2 W

## R17

SECTION 22

SECTION 23



SECTION 27

SECTION 26

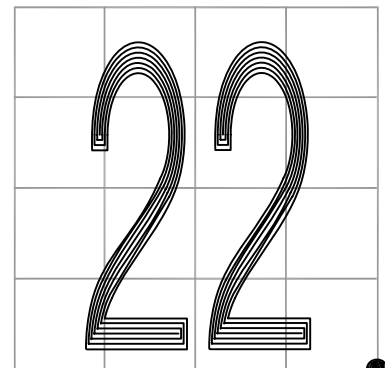
MONUMENT: 1" IRON ROD

PARTY: DPS/JL

DATE: 3/14/16

COMMENTS: 7' E OF  $\phi$  OF US 35. NEW MONUMENT INSTALLED BY INDOT AFTER 2008 ROAD PAVING.

MAG NAIL IN W FACE OF PWP 792/917



## R17