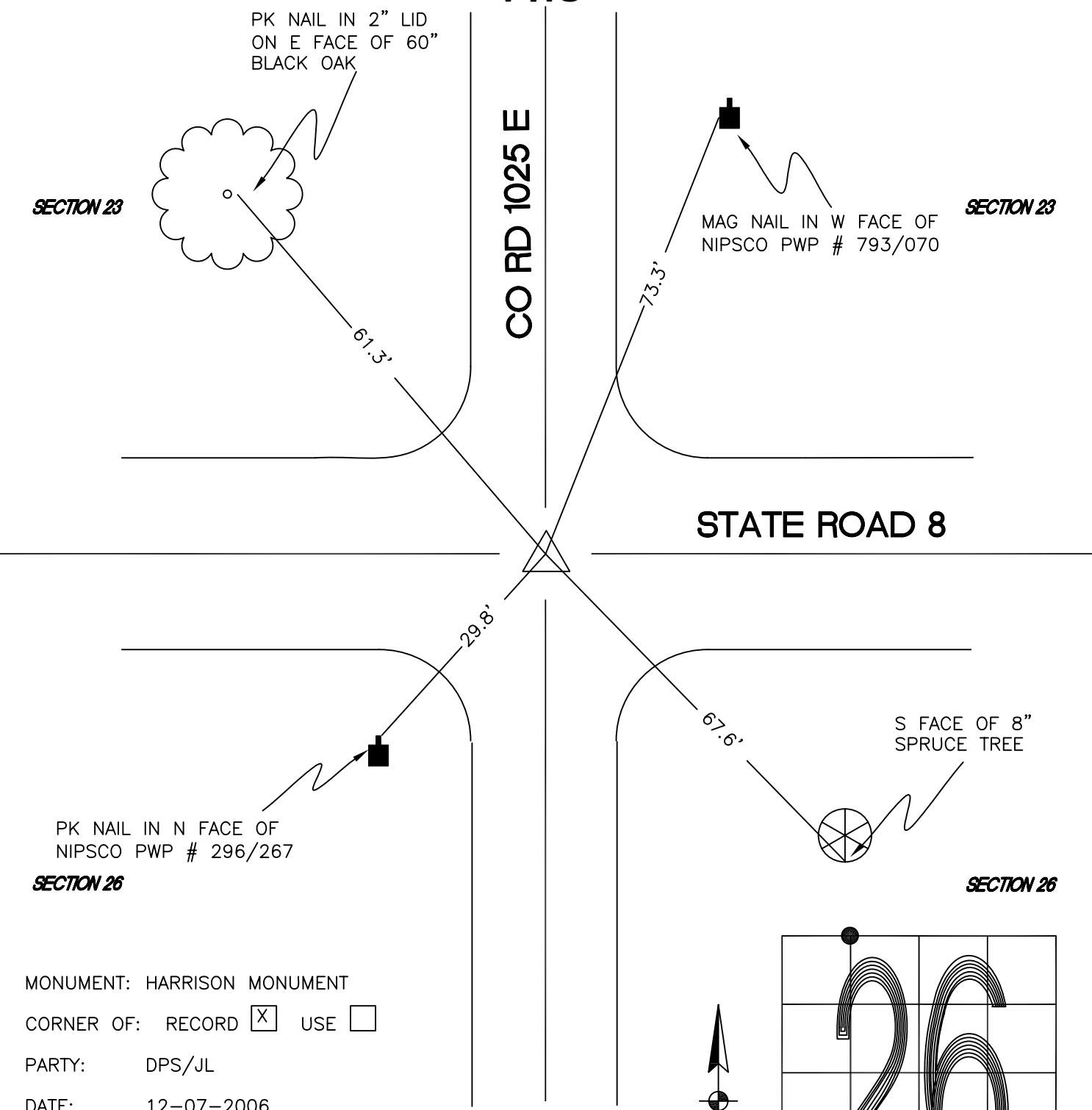


WASHINGTON TOWNSHIP

T 33 N, R 1 W

R18



SECTION 23

SECTION 23

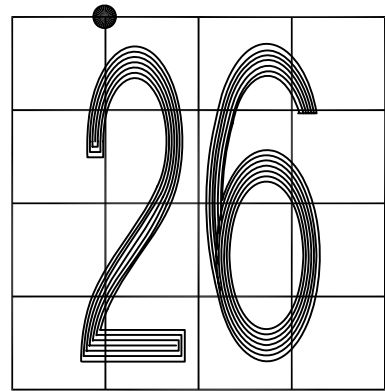
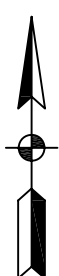
CO RD 1025 E

STATE ROAD 8

SECTION 26

SECTION 26

MONUMENT: HARRISON MONUMENT
CORNER OF: RECORD USE
PARTY: DPS/JL
DATE: 12-07-2006
COMMENTS: RR SPK REPLACED WITH HARRISON @ RESURFACING



R18

CORNER LOCATION IN THE SECTION