

SECTION CORNER REFERENCE

SECTION 23 TOWNSHIP 34-N RANGE 2-W
(Description of Corner Location) SOUTH QUARTER CORNER

R19

R19

DAVIS TWP.,
STARKE COUNTY, INDIANA



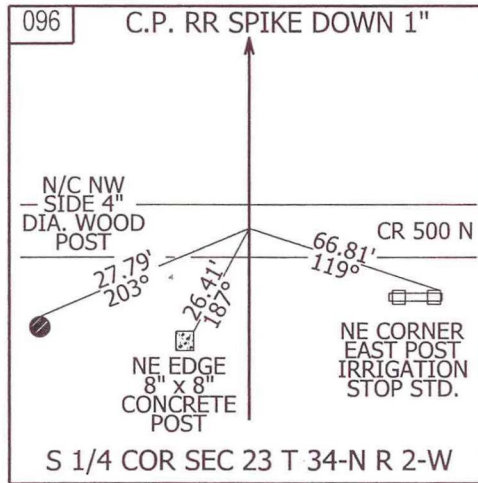
COORDINATES

- NAD '83 IN E. ZONE
- NAD '83 IN W. ZONE
- LOCAL GRID

Units: US FEET
 Pt. #: 096
 N: 6,630.968
 E: 12,653.016

TYPE OF MON.: C.P. RAILROAD SPIKE
 DEPTH: 1"
 UNCERTAINTY: _____
 BY: COUNTY SURVEYOR
 DATE: JULY 2009
 DES.NO.: 0500068

STATE FORM 40180 (R2/2-04)

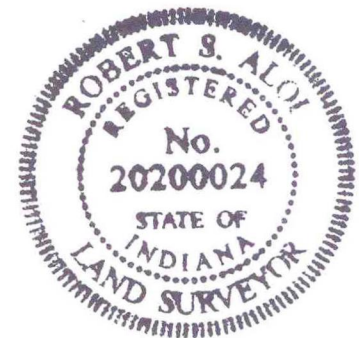


REFERENCED BY: INDOT

COMMENTS: MONUMENT IS DIFFERENT THAN WHAT IS REFERENCED IN 1989

RAILROAD SPIKE APPEARS TO HAVE BEEN PLACED INSIDE IRON PIPE. MONUMENT OF RECORD.

MONUMENT TYPE (IRON PIPE) AND LOCATION
NEED TO BE VERIFIED AND RE-REFERENCED
BY SURVEY.



R19