

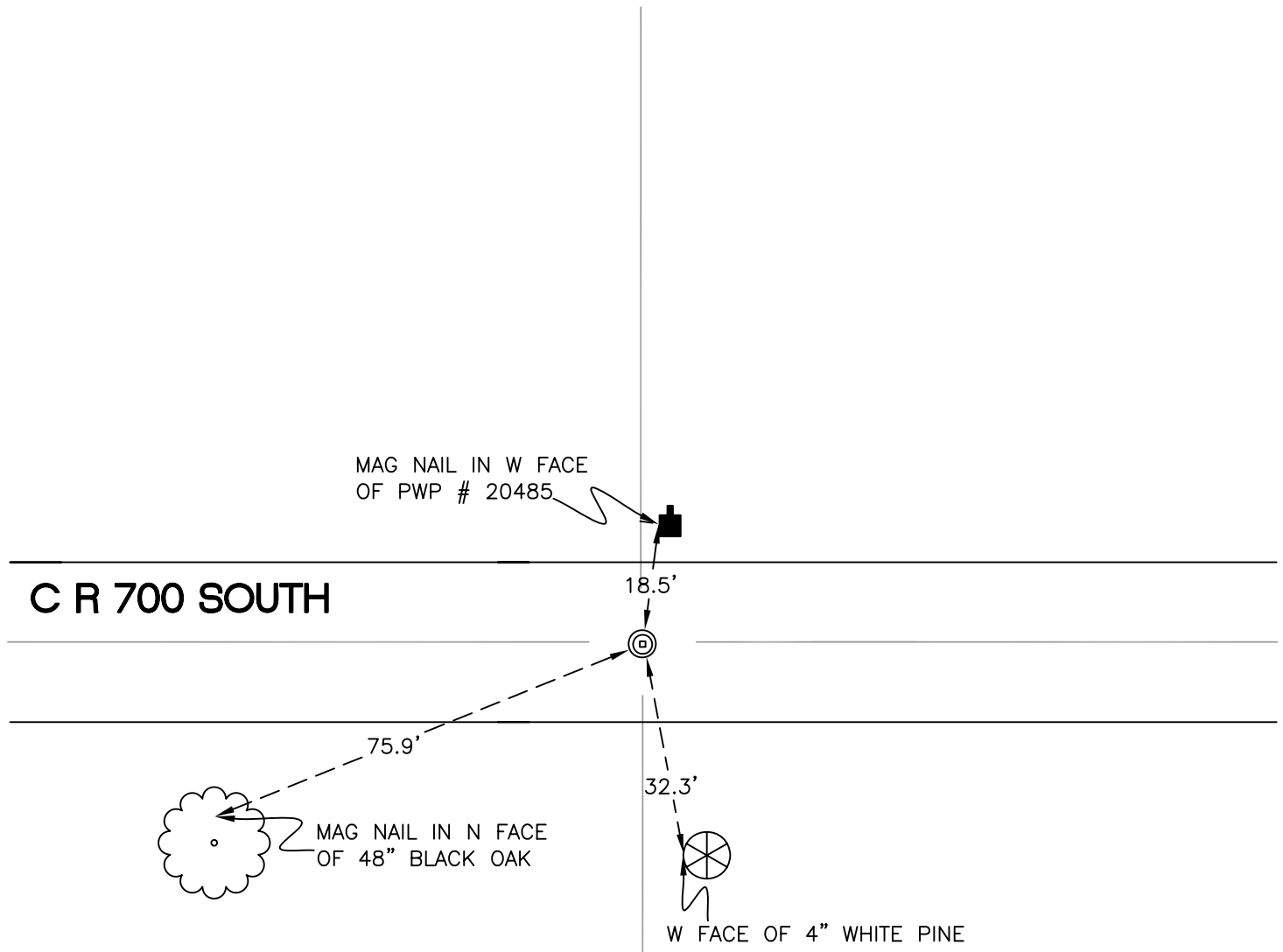
RAILROAD TOWNSHIP

T 32 N, R 4 W

R19

SECTION 23

SECTION 23



SECTION 26

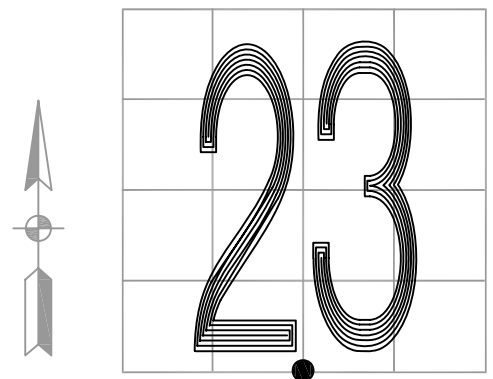
SECTION 26

MONUMENT: 1½" IRON PIPE w/ RR CROSSING BOLT

PARTY: DPS/REZ

DATE: 2015

COMMENTS: FOUND BY ES IN 1977 AND CETA IN 1978



CORNER LOCATION IN THE SECTION

R19